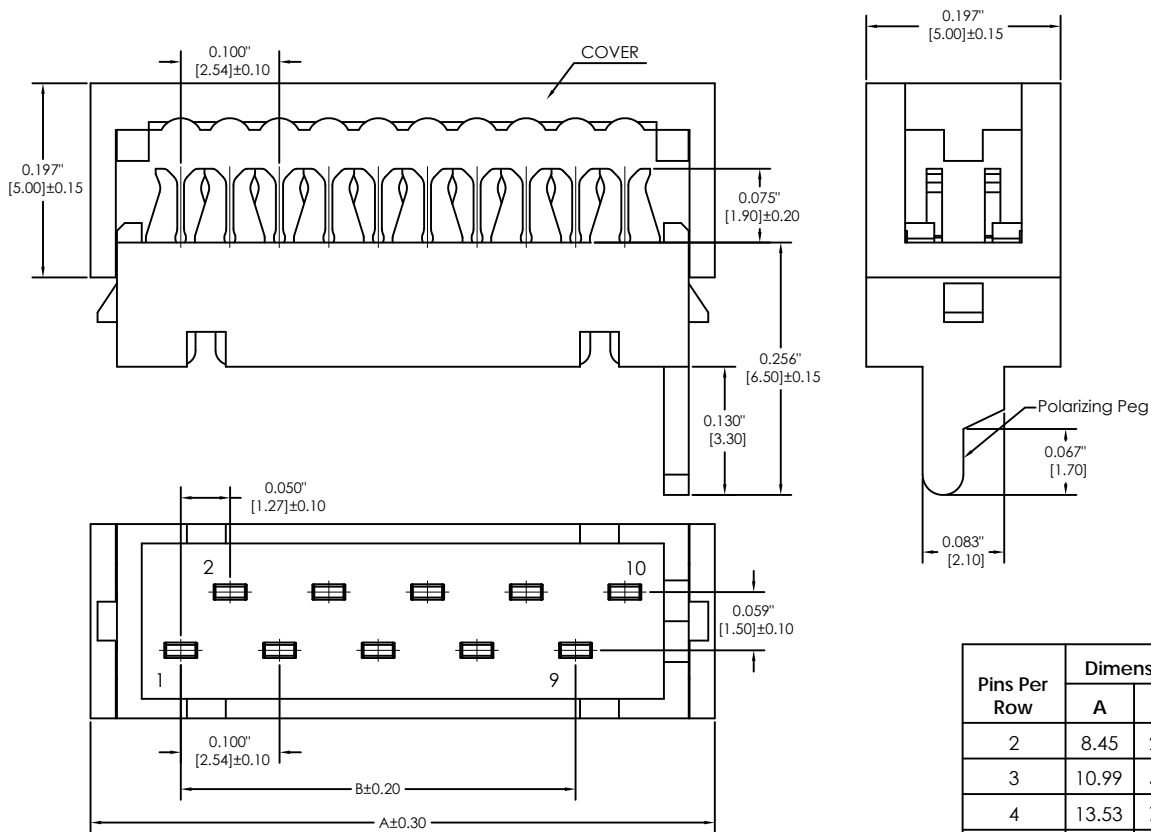


# Major League Electronics .050" Staggered cl IDC Male On Wire Connector - Cable Mount



Pins Per Row	Dimension		Qty / Tube
	A	B	
2	8.45	2.54	68
3	10.99	5.08	52
4	13.53	7.62	42
5	16.07	10.16	36
6	18.61	12.70	31
7	21.15	15.24	27
8	23.69	17.78	24
9	26.23	20.32	22
10	28.77	22.86	20

## Specification

### Electrical:

Rated Current: 1.0AMP  
 Contact Resistance: 20mΩ max  
 Withstand Voltage: 500V AC/DC  
 Insulation Resistance: 1000MΩ min  
 Operation Temperature: -40°C to +105°C

### Material:

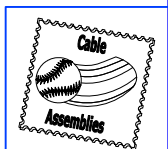
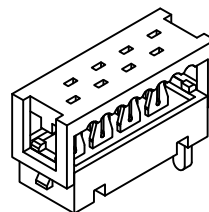
Contact Material: Phosphor Bronze  
 Contact Plating: Sn Over Ni  
 Insulator Material: PBT+15%GF(UL94V-0), Red  
 Packing: Tube without Pick and Place Pad

### Termination:

.050" ribbon cable  
 Contact MLE For Cable Assemblies

## Ordering Information

MICRO - 05 -  - LF  
 Pins Per Row: 02, 03, 04, 05, 06, 07, 08, 09, 10  
 Lead Free



Mates with:  
 MICRO-01 (Wire To Board),  
 MICRO-02 (Wire To Board),  
 MICRO-03 (Wire To Board)

Products cut to specific sizes are uncancellable/nonreturnable

Parts are subject to change without notice

MICRO-05 SERIES

.050" Staggered cl IDC Male On Wire Connector  
 Cable Mount With Polarizing Peg

26 AUG 10

Scale  
 NTS

UNLESS OTHERWISE SPECIFIED  
 DIMENSIONS IN INCHES [MM]  
 TOLERANCES ARE:

ONE PLACE DECIMALS ±.100  
 TWO PLACE DECIMALS ±.010  
 THREE PLACE DECIMALS ±.005  
 FOUR PLACE DECIMALS ±.0020  
 ANGLES  
 ±.5°



4235 Earnings Way, New Albany, Indiana, 47150, USA  
 1-800-782-3486 (USA/Canada/Mexico)  
 Tel: 812-944-7244  
 Fax: 812-944-7268  
 E-mail: mle@mlelectronics.com  
 Web: www.mlelectronics.com

Revision  
 B

Sheet  
 1/2

# Revisions

Revision B - (12th May 2011)

Amendment to part number for entire series,  
Total Pins has been changed to Pins Per Row.

Therefore MICRO-XX-04 is now MICRO-XX-02  
(4 total pins now equals 2 pins per row in part number).


**Was:**

Total Pins  
04, 06, 08, 10, 12, 14, 16, 18, 20

**Now:**

Pins Per Row  
02, 03, 04, 05, 06, 07, 08, 09, 10

Products cut to specific sizes are uncancellable/nonreturnable      Parts are subject to change without notice

	<b>MICRO-05 SERIES</b>	.050" Staggered cl IDC Male On Wire Connector Cable Mount With Polarizing Peg	<b>26 AUG 10</b>	Scale NTS
UNLESS OTHERWISE SPECIFIED DIMENSIONS IN INCHES [MM] TOLERANCES ARE:  ONE PLACE DECIMALS ±.100 TWO PLACE DECIMALS ±.010 THREE PLACE DECIMALS ±.005 FOUR PLACE DECIMALS ±.0020  ANGLES ±.5°		4235 Earnings Way, New Albany, Indiana, 47150, USA 1-800-782-3486 (USA/Canada/Mexico) Tel: 812-944-7244 Fax: 812-944-7268 E-mail: mle@mlelectronics.com Web: www.mlelectronics.com		Revision B

