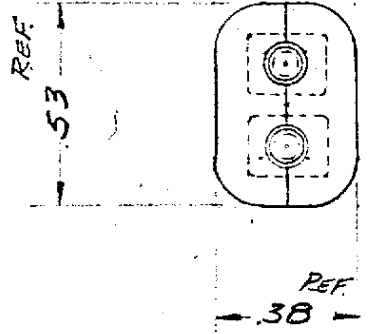
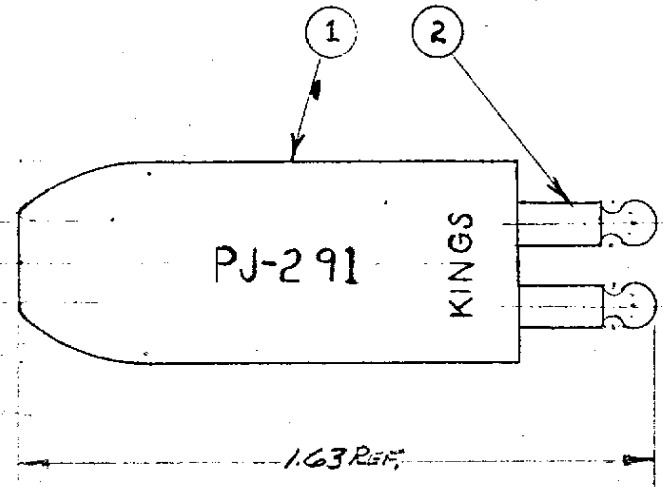


UNLESS OTHERWISE SPECIFIED LIMITS ON DIMENSIONS ARE:  
 FRACTIONS ±                      DECIMALS ±                      ANGLES ±

REF: .262



NOTE:  
 1. SOLDER CUP OF PLUG PINS  
 TINNED

REVISIONS	
ISSUE	CHANGES
1	NOTE ADDED 2-22-55
2	CN 12069 A J.G.L. 26 MAR 73

REF:  
 MIL-P-642/G  
 M642/G-1

FINISH
SPEC.
MAT.
SPEC.

PLUG  
 PJ-291

ITEM NO.	NO. REQ.	DESCRIPTION	DWG. NO.
2	2	FIN	
1	2	SHELL	

DRAWN M.S.	DATE 2-29-52
APPR.	DATE 2-23-55

ALLOW FOR PLATING  
 ON ALL MACHINED  
 SURFACES

REMOVE ALL BURRS, MAINTAIN  
 SHARP CORNERS UNLESS HAMMERS,  
 RADIUS OR FILLETS ARE SPECIFIED.

UNLESS OTHERWISE SPECIFIED,  
 MAXIMUM ACCEPTABLE SURFACE ROUGHNESS IS  
 100 MICROINCHES RMS IN ACCORDANCE WITH NAS-30.

KINGS ELECTRONICS  
 40 MARBLEDALE ROAD  
 TUCKAHOE, N. Y.