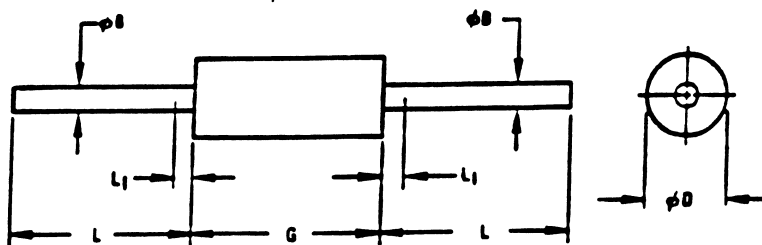


1N3122

Description: Fast Rectifier,  $100\text{mA} < I(O)/I(F) \leq 200\text{mA}$

Manufacturer.....	many
Mil/High-Rel? (Y/N).....	
I(out) (If AVG) Max.....	180m
VRRM.....	20
t(rr) (S).....	3.5u
@If (test).....	300m
@Ir (A).....	
Vf Max.....	.34
@If (test).....	10m
Ir @25xC.....	15u
@Volts (test) (V).....	10
Ir @ Diff. Temp (A).....	
@Temp (test) (xC).....	
Mat.....	Germanium
Oper. Temp (xC) Max.....	75 ~
Pkg Style.....	D0-7



NOTES:

1. PACKAGE CONTOUR OPTIONAL WITHIN CYLINDER OF DIAMETER ϕD AND LENGTH G. SLUGS, IF ANY, SHALL BE INCLUDED WITHIN THIS CYLINDER BUT SHALL NOT BE SUBJECT TO THE MINIMUM LIMIT OF ϕD.
2. LEAD DIAMETER NOT CONTROLLED IN THIS ZONE TO ALLOW FOR FLASH, LEAD FINISH BUILD-UP, AND MINOR IRREGULARITIES OTHER THAN SLUGS.

SYMBOL	INCHES		MILLIMETERS		NOTES
	MIN.	MAX.	MIN.	MAX.	
ϕB	.018	.022	0.458	0.558	-
ϕD	.085	.107	2.16	2.71	1
G	.230	.300	5.85	7.62	1
L	1.000	-	25.40	-	-
L1	-	.050	-	1.27	2

