

FEATURES AND SPECIFICATIONS

Features and Benefits

- Sizes 48 and 96 circuits
- DIN 41612 and IEC 603-2 compatible
- Two points of contact provide low insertion force and reliable connection

Reference Information

Product Specification: PS-53234/PS-53318
 Packaging: Tray
 UL File No.: E29179 (for 53234 only)
 CSA File No.: LR19980
 Mates With: 52302 and 52480
 Designed In: Millimeters

Electrical

Voltage: 300V
 Current: 2.0A
 Contact Resistance: 20mΩ max.
 Dielectric Withstanding Voltage: 1000V AC
 Insulation Resistance: 10⁶ MΩ min.

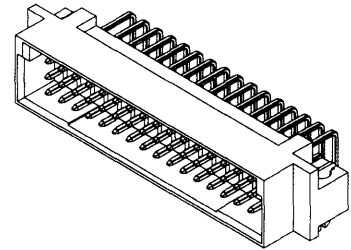
Physical

Housing: Glass-filled PBT, UL 94V-0
 Contact: Brass
 Metal Peg: Phosphor Bronze
 Plating: See Table
 Operating Temperature: -55 to +105°C

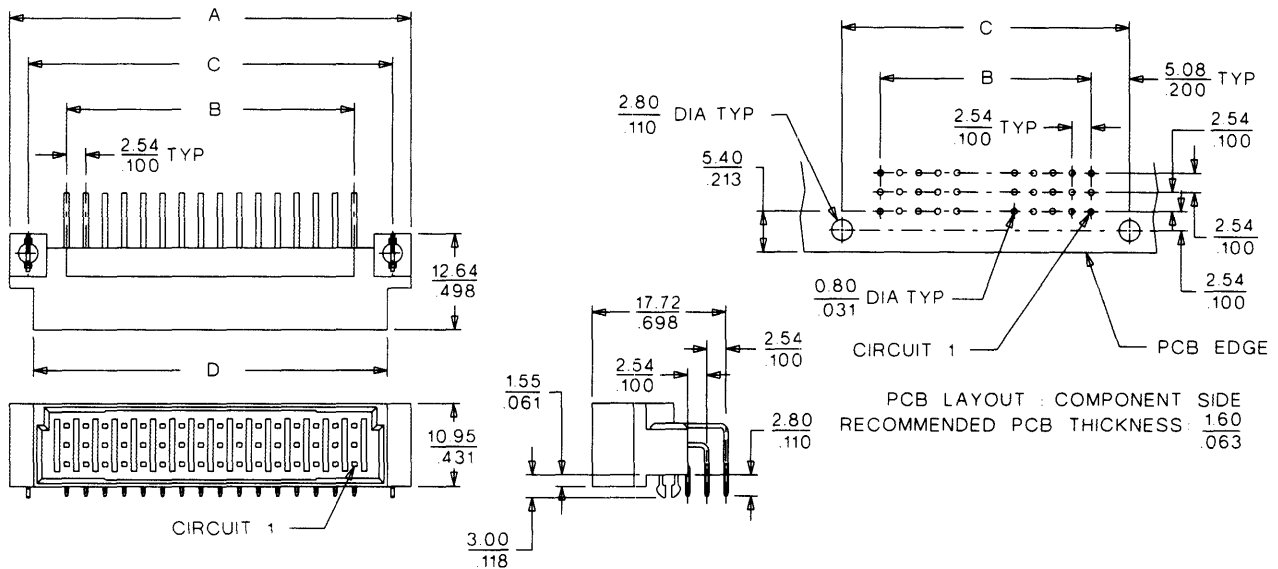
molex® 2.54mm (.100") Pitch DIN 41612 Header

53234/53318

Triple Row Right Angle



CATALOG DRAWING (FOR REFERENCE ONLY)



ORDERING INFORMATION AND DIMENSIONS

Circuits	Order No.		Dimension			
	Without Metal Peg	With Metal Peg	A	B	C	D
48	53234-048X	53318-048X	53.16 (2.093)	38.10 (1.500)	48.26 (1.900)	46.86 (1.845)
96	53234-096X	53318-096X	93.80 (3.693)	78.74 (3.100)	88.90 (3.500)	87.50 (3.445)
Replace X with plating no., 0-3						

Plating No. 0: 0.1µm Gold with Nickel underplate overall and Tin/Lead in solder area
 Plating No. 1: 0.3µm Gold with Nickel underplate overall and Tin/Lead in solder area
 Plating No. 2: 0.5µm Gold with Nickel underplate overall and Tin/Lead in solder area
 Plating No. 3: 0.76µm Gold with Nickel underplate overall and Tin/Lead in solder area

