

New Jersey Semi-Conductor Products, Inc.

20 STERN AVE.
 SPRINGFIELD, NEW JERSEY 07081
 U.S.A.

TELEPHONE: (201) 376-2922
 (212) 227-6005
 FAX: (201) 376-8960

PARAMETERS

2N4173

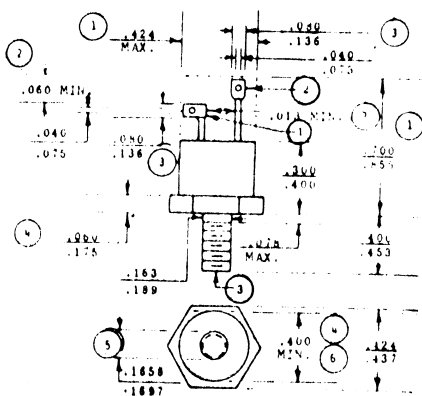
SCR, V(DRM) = 500 V TO 599.9 V

Description: SCR, V(DRM) = 500 V to 599.9 V

| | |
|--------------------------------|------|
| Manufacturer..... | |
| Mil/High-Rel? (Y/N)..... | |
| V(drm) Max..... | 500 |
| It(stat) Max. (A)..... | 5.0 |
| @Temp. (test) (x°C)..... | 70# |
| Supp Curr. I(TSM)..... | 100, |
| Firing Char-Igt Max..... | 60 |
| Firing Char-Vgt Max..... | 2. |
| Id(off) Max. (A)..... | 2.0m |
| @Temp. (test) (x°C)..... | 100# |
| I(h) Max. (A)..... | 60 |
| V(T) Max..... | 2.0 |
| @It (A)..... | 15 |
| Dv/Dt Worst Case..... | |
| t(switch) Off Typ. Time (S)... | |
| @It (test) (A)..... | |
| t(switch) Off Typ. Time (S)... | |
| Oper. Temp (x°C) Min..... | -40 |
| Oper. Temp (x°C) Max..... | 100# |
| Pkg Style..... | |
| Surface Mounted Yes/No..... | NO |

Case Temperature Measured at < 25x°C , For less than + cycle

TO64



1. The outline contour with exception of hexagon is optional within zone or dimension specified.
2. Minimum difference in terminal lengths to establish datum line for numbering terminals.
3. Contour and orientation of fixed terminal lugs are optional.
4. A chamfer (or undercut) on one or both ends of hexagonal portion is optional.
5. Pitch diameter - thread 16-32 UNF-2A (coated). Reference (screw thread standard for federal services - handbook H-28).
6. Minimum diameter of seating plane.
7. Minimum spacing between terminals.



Quality Semi-Conductors