

PLEASE CHECK WWW.MOLEX.COM FOR LATEST PART INFORMATION

Part Number: [0399400511](#)
Status: **Active**
Description: 5.08mm (.200") Pitch Beau™ EuroMate™ Pluggable PCB Terminal Block, Dual Level, 270° Wire Entry, with Retention Screws, 11 Circuits

Documents:

[Drawing \(PDF\)](#) [RoHS Certificate of Compliance \(PDF\)](#)
[Product Specification PS-39940-001 \(PDF\)](#)

Agency Certification

UL E48521

General

| | |
|-----------------------------|------------------------|
| Product Family | Terminal Blocks |
| Series | 39940 |
| Application | Wire-to-Board |
| Comments | Gold plating available |
| Component Type | Plug |
| Product Literature Order No | USA-264 |
| Product Name | EuroMate™ Pluggable |
| Type | Euro Block |

Physical

| | |
|-------------------------------|------------------------|
| Circuits (Loaded) | 11 |
| Color - Resin | Black |
| Entry Angle | Horizontal |
| Flammability | 94V-0 |
| Lock to Mating Part | Yes |
| Material - Resin | Nylon |
| Number of Rows | 2 |
| Orientation | Vertical |
| PCB Retention | N/A |
| Panel Mount | No |
| Pitch - Mating Interface (in) | 0.200 In |
| Pitch - Mating Interface (mm) | 5.08 mm |
| Pitch - Term. Interface (in) | 0.200 In |
| Pitch - Term. Interface (mm) | 5.08 mm |
| Polarized to Mating Part | Yes |
| Shrouded | Tri-Barrier |
| Stackable | No |
| Temperature Range - Operating | 130°C |
| Termination Interface: Style | Screw or Lug |
| Wire Size AWG | 12, 14, 16, 18, 20, 22 |
| Wire Size mm² | 0.50 - 2.50 |

Electrical

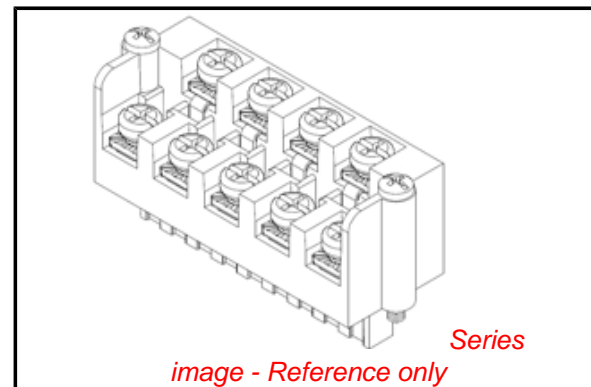
| | |
|-------------------------------|------|
| Current - Maximum per Contact | 15A |
| Voltage - Maximum | 300V |

Material Info

Old Part Number 946911

Reference - Drawing Numbers

| | |
|-----------------------|--------------|
| Product Specification | PS-39940-001 |
| Sales Drawing | SD-39940-003 |



EU RoHS

ELV and RoHS Compliant
REACH SVHC
 Not Reviewed
Halogen-Free Status
 Not Reviewed

China RoHS



Need more information on product environmental compliance?

Email productcompliance@molex.com
 For a multiple part number RoHS Certificate of Compliance, [click here](#)

Please visit the [Contact Us](#) section for any non-product compliance questions.

Search Parts in this Series

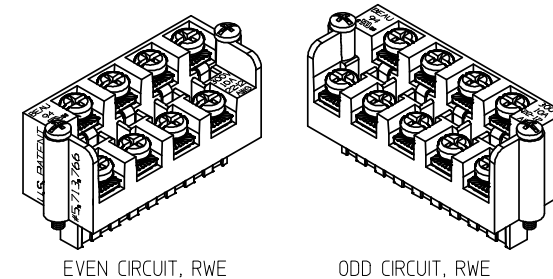
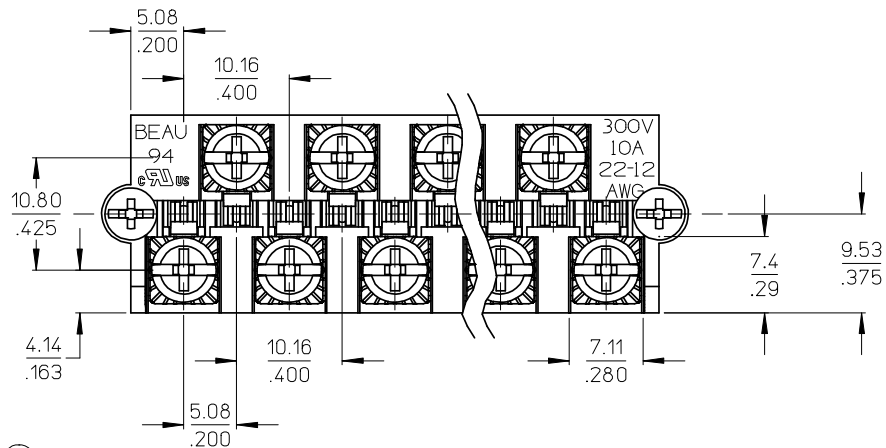
[39940Series](#)

Mates With

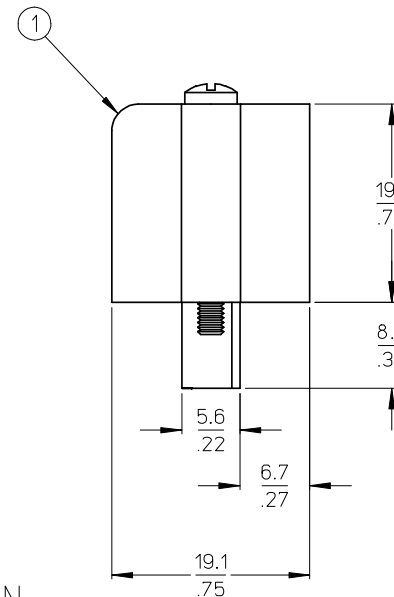
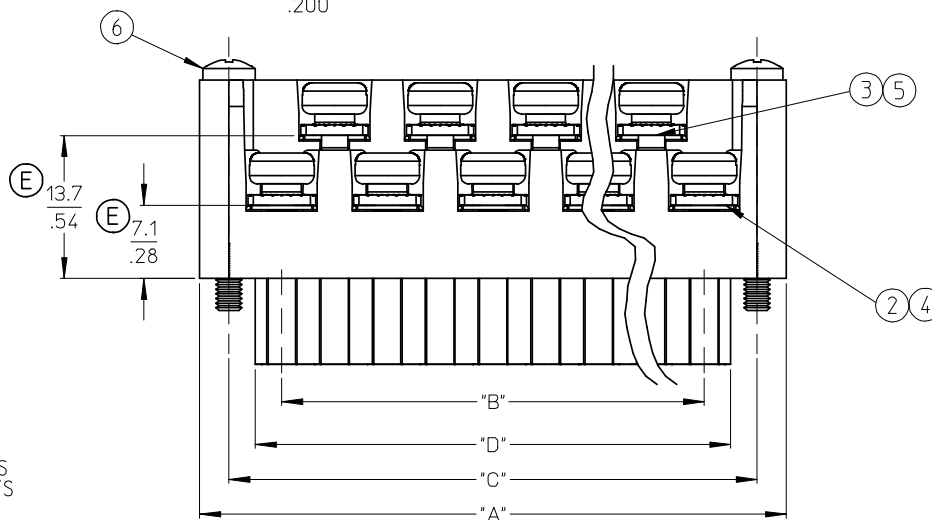
[39535-0011](#) , [39535-4011](#) , [39536-0011](#) , [39536-4011](#)

This document was generated on 05/13/2010

PLEASE CHECK WWW.MOLEX.COM FOR LATEST PART INFORMATION



AUXILIARY VIEWS
SCALE 1:1



NOTES:

1. MATERIAL: SEE TABLE
2. FINISHES: SEE TABLE
3. PRODUCT SPECIFICATION: NOT REQUIRED
4. PACKAGING: NOT REQUIRED
5. MATES WITH: MOST 5.08 (.200) PIN HEADERS
6. "XX" REFERS TO THE QUANTITY OF CIRCUITS
7. ROHS COMPLIANT



ODD CIRCUIT CONFIGURATION SHOWN

| | | | | | |
|------|-----------------------------------|----------------------------------|--------------------------------|---------------|----------------|
| 8 | 2 | 2 | SCREW, MOUNTING, M2.5 X .450 | STEEL | ZINC CHROMATE |
| 7 | XX | XX | SCREW, M3.5 X .280 | STEEL | ZINC CHROMATE |
| 6 | XX | XX | NUT, M3.5, HEX | STEEL | ZINC CHROMATE |
| 5 | XX/2 | (XX-1/2) | REAR ROW TERMINAL (-G30 OPT.) | PHOS. BRONZE | SELECTIVE GOLD |
| 4 | XX/2 | (XX+1/2) | FRONT ROW TERMINAL (-G30 OPT.) | PHOS. BRONZE | SELECTIVE GOLD |
| 3 | XX/2 | (XX-1/2) | REAR ROW TERMINAL | PHOS. BRONZE | HOT TIN DIP |
| 2 | XX/2 | (XX+1/2) | FRONT ROW TERMINAL | PHOS. BRONZE | HOT TIN DIP |
| 1 | 1 | 1 | BARRIER | THERMOPLASTIC | BLACK |
| ITEM | QTY. (EVEN NO. OF CIRCUITS) | QTY. (ODD NO. OF CIRCUITS) | DESCRIPTION | MATERIAL | FINISH |

REVISED & REDRAWN
EC NO: WNA2008-0391
DRWN: JENC INAS 2008/07/01
CHKD: CYORK 2008/07/02
APPR: JMACNEIL 2008/07/07

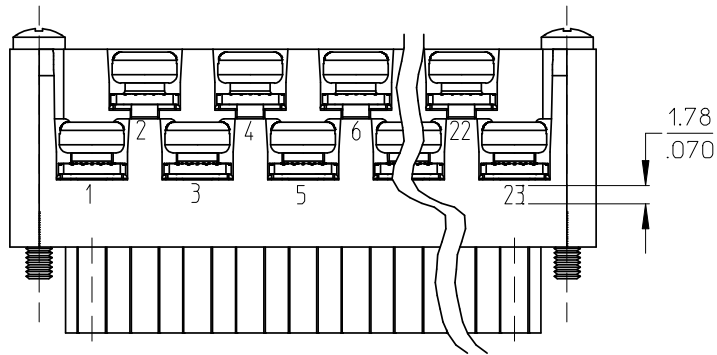
QUALITY SYMBOLS
▽=0
▽=0

| GENERAL TOLERANCES (UNLESS SPECIFIED) | |
|--|-------------|
| | MM/IN |
| 4 PLACES | ±.005 ±.005 |
| 3 PLACES | ±.010 ±.010 |
| 2 PLACES | ±.015 ±.015 |
| 1 PLACE | ±.030 ±.030 |
| ANGULAR ± 2 ° | |
| DRAFT WHERE APPLICABLE MUST REMAIN WITHIN DIMENSIONS | |

| DIMENSION STYLE | |
|-----------------|------------|
| MM/IN | |
| DRAWN BY | DATE |
| C. YORK | 2004/03/18 |
| CHECKED BY | DATE |
| R. STONE | 2004/03/18 |
| APPROVED BY | DATE |
| G. ROBERTSON | 2004/03/18 |
| MATERIAL NO. | |
| SEE SHEET 2 | |
| SIZE | B |

| | | | | |
|---|-----|--------------|-----------|------------------------|
| SCALE | 2:1 | DESIGN UNITS | INCH | THIRD ANGLE PROJECTION |
| TITLE | | | | |
| 5.08/.200 PLUG ASSY, FWE WITH STD. MOUNTING ENDS (9469XX) | | | | |
| MOLEX INCORPORATED | | | SHEET NO. | |
| DOCUMENT NO. | | | 1 OF 2 | |
| SD-39940-003 | | | | |
| THIS DRAWING CONTAINS INFORMATION THAT IS PROPRIETARY TO MOLEX INCORPORATED AND SHOULD NOT BE USED WITHOUT WRITTEN PERMISSION | | | | |

| NO. OF CIRC. "XX" | "A" | "B" | "C" | "D" ^{+0.00} _{-0.25} [^{+0.000} _{-0.010}] | MATERIAL NO. (STANDARD) | MATERIAL NO. (-G30 OPT.) | MATERIAL NO. (-10A OPT.) |
|-------------------|--------------|---------------|---------------|---|-------------------------|--------------------------|--------------------------|
| 03 | 25.9 [1.02] | 40.16 [1.60] | 20.32 [0.80] | 15.2 [0.60] | 399400503 | 399410503 | |
| 04 | 31.0 [1.22] | 45.24 [1.80] | 25.40 [1.00] | 20.3 [0.80] | 399400504 | 399410504 | |
| 05 | 36.1 [1.42] | 50.32 [1.98] | 30.48 [1.20] | 25.4 [1.00] | 399400505 | 399410505 | |
| 06 | 41.1 [1.62] | 55.40 [2.18] | 35.56 [1.40] | 30.5 [1.20] | 399400506 | 399410506 | |
| 07 | 46.2 [1.82] | 60.48 [2.38] | 40.64 [1.60] | 35.6 [1.40] | 399400507 | 399410507 | |
| 08 | 51.3 [2.02] | 65.56 [2.58] | 45.72 [1.80] | 40.6 [1.60] | 399400508 | 399410508 | |
| 09 | 56.4 [2.22] | 70.64 [2.78] | 50.80 [2.00] | 45.7 [1.80] | 399400509 | 399410509 | |
| 10 | 61.5 [2.42] | 75.72 [2.98] | 55.88 [2.20] | 50.8 [2.00] | 399400510 | 399410510 | |
| 11 | 66.5 [2.62] | 80.80 [3.18] | 60.96 [2.40] | 55.9 [2.20] | 399400511 | 399410511 | |
| 12 | 71.6 [2.82] | 85.88 [3.38] | 66.04 [2.60] | 61.0 [2.40] | 399400512 | 399410512 | |
| 13 | 76.7 [3.02] | 90.96 [3.58] | 71.12 [2.80] | 66.0 [2.60] | 399400513 | 399410513 | |
| 14 | 81.8 [3.22] | 96.04 [3.78] | 76.20 [3.00] | 71.1 [2.80] | 399400514 | 399410514 | 399490015 |
| 15 | 86.9 [3.42] | 101.12 [3.98] | 81.28 [3.20] | 76.2 [3.00] | 399400515 | 399410515 | |
| 16 | 91.9 [3.62] | 106.20 [4.18] | 86.36 [3.40] | 81.3 [3.20] | 399400516 | 399410516 | |
| 17 | 97.0 [3.82] | 111.28 [4.38] | 91.44 [3.60] | 86.4 [3.40] | 399400517 | 399410517 | |
| 18 | 102.1 [4.02] | 116.36 [4.58] | 96.52 [3.80] | 91.4 [3.60] | 399400518 | 399410518 | |
| 19 | 107.2 [4.22] | 121.44 [4.78] | 101.60 [4.00] | 96.5 [3.80] | 399400519 | 399410519 | |
| 20 | 112.3 [4.42] | 126.52 [4.98] | 106.68 [4.20] | 101.6 [4.00] | 399400520 | 399410520 | |
| 21 | 117.3 [4.62] | 131.60 [5.18] | 111.76 [4.40] | 106.7 [4.20] | 399400521 | 399410521 | |
| 22 | 122.4 [4.82] | 136.68 [5.38] | 116.84 [4.60] | 111.8 [4.40] | 399400522 | 399410522 | |
| 23 | 127.5 [5.02] | 141.76 [5.58] | 121.92 [4.80] | 116.8 [4.60] | 399400523 | 399410523 | |
| 24 | 132.6 [5.22] | 146.84 [5.78] | 127.00 [5.00] | 121.9 [4.80] | 399400524 | 399410524 | |



OPTIONAL
10A IMPRINTING
(ODD CIRCUIT CONFIGURATION SHOWN)

| | | | | | |
|---|---|--|--|--|--|
| SEE SHEET 1 EEC NO: WNA2008-0391 DRWN: JENCINAS 2008/07/01 CHKD: CYORK 2008/07/02 APPR: JMACNEIL 2008/07/02 | QUALITY SYMBOLS ▽=0 ▽=0 | GENERAL TOLERANCES (UNLESS SPECIFIED) mm INCH 4 PLACES ± --- ± --- 3 PLACES ± --- ± .005 2 PLACES ± 0.13 ± .01 1 PLACE ± 0.3 ± --- ANGULAR ± 2 ° | DIMENSION STYLE MM/IN DRAWN BY DATE C. YORK 2004/03/18 CHECKED BY DATE R. STONE 2004/03/18 APPROVED BY DATE G. ROBERTSON 2004/03/18 | SCALE 2:1 DESIGN UNITS INCH THIRD ANGLE PROJECTION | TITLE 5.08/.200 PLUG ASSY, FWE WITH STD. MOUNTING ENDS (9469XX) |
| | MATERIAL NO. SEE CHART | DOCUMENT NO. SD-39940-003 | SHEET NO. 2 OF 2 | | |
| | DRAFT WHERE APPLICABLE MUST REMAIN WITHIN DIMENSIONS | | | | |
| | THIS DRAWING CONTAINS INFORMATION THAT IS PROPRIETARY TO MOLEX INCORPORATED AND SHOULD NOT BE USED WITHOUT WRITTEN PERMISSION | | | | |