

PLEASE CHECK WWW.MOLEX.COM FOR LATEST PART INFORMATION

Part Number: [0535171510](#)
Status: **Active**
Description: 2.50mm (.098") Pitch Mini-Lock™ Wire-to-Board PCB Header, Vertical, 15 Circuits

Documents:

[3D Model](#) [Product Specification PS-51103-024 \(PDF\)](#)
[Drawing \(PDF\)](#) [RoHS Certificate of Compliance \(PDF\)](#)
[Product Specification PS-51103-006 \(PDF\)](#)

Agency Certification

UL E29179

General

Product Family PCB Headers
 Series [53517](#)
 Application Wire-to-Board
 Product Name Mini-Lock™

Physical

Breakaway No
 Circuits (Loaded) 15
 Glow-Wire Compliant No
 Keying to Mating Part Yes
 Lock to Mating Part Yes
 Material - Metal Phosphor Bronze
 Material - Plating Mating Tin
 Material - Resin Nylon
 Number of Rows 1
 Orientation Vertical
 PC Tail Length (in) 0.138 In
 PC Tail Length (mm) 3.50 mm
 PCB Locator Yes
 PCB Retention Yes
 PCB Thickness Recommended (in) 0.062 In
 PCB Thickness Recommended (mm) 1.60 mm
 Packaging Type Tray
 Pitch - Mating Interface (in) 0.098 In
 Pitch - Mating Interface (mm) 2.50 mm
 Polarized to Mating Part Yes
 Polarized to PCB Yes
 Shrouded Fully
 Stackable No
 Temperature Range - Operating -40°C to +105°C
 Termination Interface: Style Through Hole

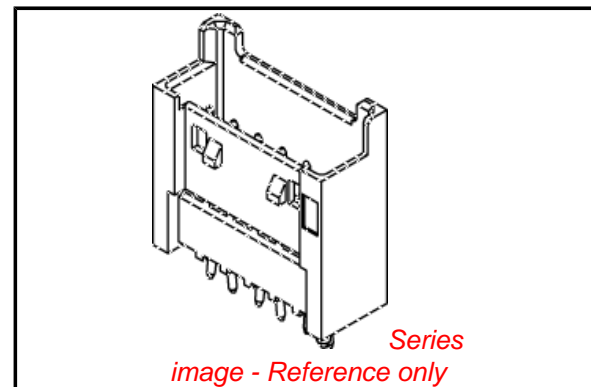
Electrical

Current - Maximum per Contact 3A
 Voltage - Maximum 250V

Material Info

Reference - Drawing Numbers

Product Specification PS-51103-006, PS-51103-024, RPS-51103-001,
 RPS-51103-003, RPS-51103-020, RPS-51103-035,
 RPS-51103-043, RPS-51103-049, RPS-51103-057,
 RPS-51163-001, RPS-51163-003
 Sales Drawing SD-53517-001



EU RoHS

**ELV and RoHS
Compliant**
REACH SVHC
 Not Reviewed
**Halogen-Free
Status**
 Not Reviewed

China RoHS



**Need more information on product
environmental compliance?**

Email productcompliance@molex.com
 For a multiple part number RoHS Certificate of
 Compliance, [click here](#)

Please visit the [Contact Us](#) section for any
 non-product compliance questions.

Search Parts in this Series

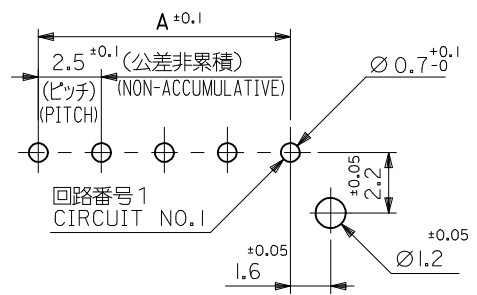
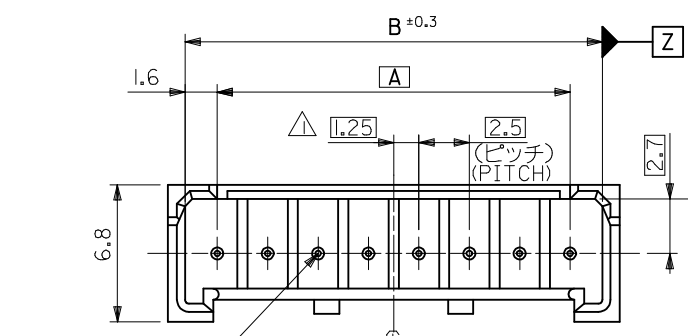
[53517Series](#)

Mates With

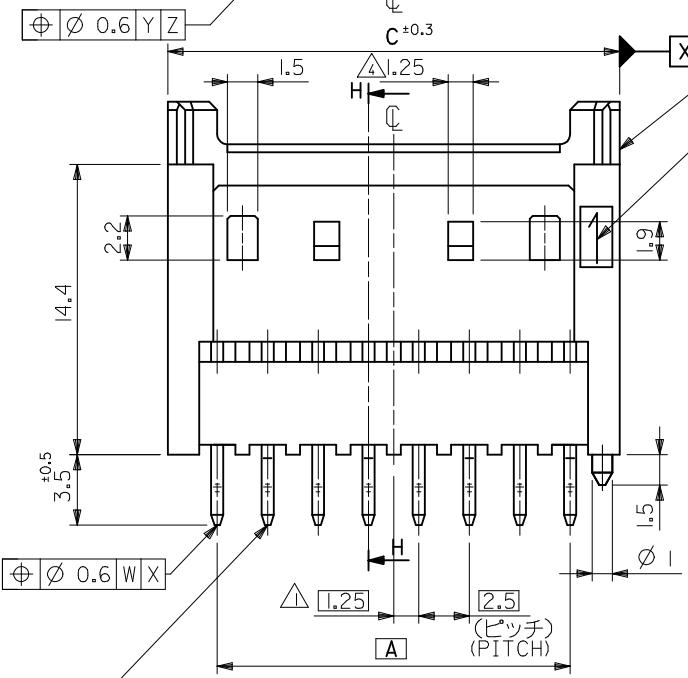
[51103](#) Crimp Housing, [50351](#) Crimp
 Terminal

This document was generated on 04/16/2010

PLEASE CHECK WWW.MOLEX.COM FOR LATEST PART INFORMATION

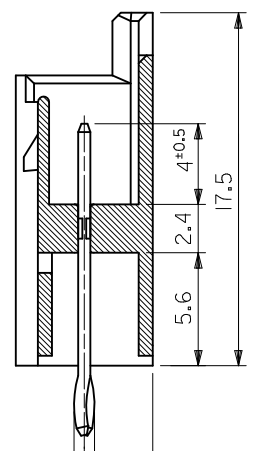


基板取付穴推奨寸法 (マウント面)
RECOMMENDED P.C.BOARD HOLE DIMENSION
(MOUNTING SIDE)
($t=1.6$) (SCALE 5 : 1)



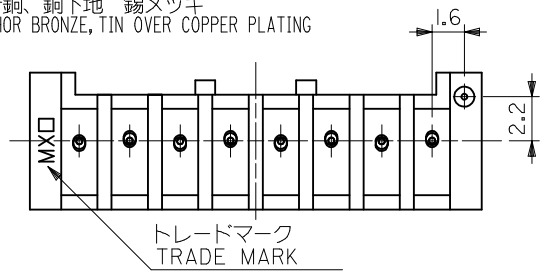
ウエハー
WAFER
NYLON66,UL94V-0

回路番号1
CIRCUIT NO.1



断面 H-H
SECT. H-H

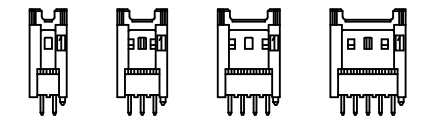
リン青銅、銅下地 錫メッキ
PHOSPHOR BRONZE, TIN OVER COPPER PLATING



トレードマーク
TRADE MARK

注記
NOTES

- △ 偶数極品に適用。
APPLIES ONLY TO EVEN NO. CKT. SIZES.
- 2. 嵌合相手 : 51103,51136 シリーズ
MATES WITH : 51103,51136 SERIES.
- 3. ELV AND RoHS COMPLIANT.
- △ 2, 3極品において、下記寸法とする。
DIMENSIONS OF 2 AND 3 CKTS IS FOLLOWING.
- 2CKTS : NONE
3CKTS : 1
- 5. MATERIAL
WAFER PA, UL94V-0, COLOR : NATURAL
PIN PHOSPHOR BRONZE, TIN OVER COPPER PLATING



2極 3極 4極 5極
2 CKT. 3 CKT. 4 CKT. 5 CKT.

ロック形状図
LOCK CONFIGURATION

| | | | | |
|------|------|------|------------------------|-----------------|
| 39.9 | 38.2 | 35 | 53517 - 1510 | 15 |
| 37.4 | 35.7 | 32.5 | - 1410 | 14 |
| 34.9 | 33.2 | 30 | - 1310 | 13 |
| 32.4 | 30.7 | 27.5 | - 1210 | 12 |
| 29.9 | 28.2 | 25 | - 1110 | 11 |
| 27.4 | 25.7 | 22.5 | - 1010 | 10 |
| 24.9 | 23.2 | 20 | - 0910 | 9 |
| 22.4 | 20.7 | 17.5 | - 0810 | 8 |
| 19.9 | 18.2 | 15 | - 0710 | 7 |
| 17.4 | 15.7 | 12.5 | - 0610 | 6 |
| 14.9 | 13.2 | 10 | - 0510 | 5 |
| 12.4 | 10.7 | 7.5 | - 0410 | 4 |
| 9.9 | 8.2 | 5 | - 0310 | 3 |
| 7.4 | 5.7 | 2.5 | 53517 - 0210 | 2 |
| C | B | A | TRAY PACKAGE ORDER NO. | 極数 NO. OF CKTS. |

| | | | | | | |
|---|---------------------------------------|-----------|-----------------------------|---|---|------------------------|
| REVISED EC NO: J2010-0837 DRWN:TKON 2009/10/26 CHKD:KASAKAWA 2009/10/26 APPR:NIKIITA 2009/10/26 REV: D | GENERAL TOLERANCES (UNLESS SPECIFIED) | | DIMENSION STYLE MM ONLY | SCALE 4:1 | DESIGN UNITS METRIC | THIRD ANGLE PROJECTION |
| | 10 UNDER | ±0.3 | DRAWN BY K. TOJO | DATE 1994/05/16 | TITLE 2.5 WIRE TO BOARD CONN. WAFER ASSY -LEAD FREE- | |
| | 10 OVER 30 UNDER | ±0.25 | CHECKED BY S. KUNISHI | DATE 1994/05/16 | MOLEX INCORPORATED | |
| | 30 OVER | ±0.2 | APPROVED BY M. FUKUSHIMA | DATE 1994/05/16 | DOCUMENT NO. SD-53517-001 | SHEET NO. 1 OF 1 |
| ANGULAR ±3 ° | | SEE TABLE | | THIS DRAWING CONTAINS INFORMATION THAT IS PROPRIETARY TO MOLEX INCORPORATED AND SHOULD NOT BE USED WITHOUT WRITTEN PERMISSION | | |
| DRAFT WHERE APPLICABLE MUST REMAIN WITHIN DIMENSIONS | | | | | | |