

B-74-09-51

T-74-09-01

HF - VHF - UHF - P Band High Intercept Low Noise Amplifiers

1-2000MHz

15VDC

Specifications @ 25°C

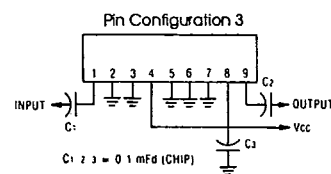
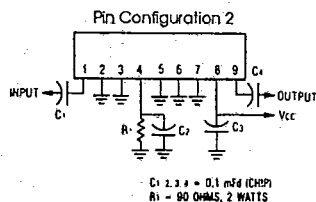
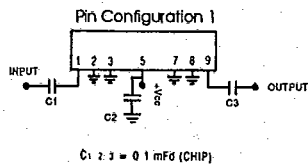
Model No.	Freq. (MHz)	IP3 (dbm) Typ.	IP2 (dbm) Typ.	Gain (db) Typ.	N.F. (db) max.	DC (ma) NOM.	P1db (dbm) min.	Outline Dwg.	Pin Config.
BR02030L2S	1-32	+51	+ 85	16	4.0	230	+30	OL2	-
BR01003250	2-32	+51	+ 85	16	4.0	230	+30	OL1	1
BR01003251	2-32	+53	+110	15	5.5	440	+32	OL4	-
BR01020050	2-200	+44	+ 76	16	5.8	230	+29	OL1	1
BR01020055	2-200	+43	+ 76	35	4.5	340	+29	OL1	1
BR01003249	2-250	+42	+ 74	18	4.1	120	+25	OL1	1
BR10030070	10-300	+40	+ 75	16	6.2	230	+28	OL1	1
BR10030071	10-300	+40	+ 73	34	4.2	350	+28	OL1	1
BR20050070	10-500	+33	+ 68	14	3.0	60	+17	OL2	-
BR20050074	10-500	+38	+ 73	10	5.8	120	+20	OL2	-
BR20050078	20-500	+38	+ 72	18	5.6	200	+25	OL1	1
BR30020350	20-500	+38	+ 73	18	4.8	200	+25	OL1	-
BR30020430	30-500	+42	+ 55	12	3.8	175	+26	OL2	-
BR30020450	30-500	+44	+ 80	10	4.5	350	+29	OL2	-
BR30020650	100-1000	+41	+ 54	12	3.4	175	+26	OL2	-
BR30020600	100-1000	+43	+ 72	10	4.3	350	+29	OL2	-
BR30020500	20-1000	+41	+ 54	12	4.0	175	+26	OL2	-
BR30020550	20-1000	+43	+ 72	10	5.0	350	+28	OL2	-
BR10100030	10-1000	+33	+ 47	12	3.8	40	+16	OL2	-
BR10100031	10-1000	+35	+ 70	10	5.0	80	+18	OL2	-
BR10100040	10-1000	+37	+ 68	9	6.8	180	+23	OL2	-
BR10100045	10-1000	+43	+ 72	30	6.0	950	+30	OL3	-
BR10100047	10-1000	+43	+ 60	35	4.5	800	+29	OL2	-
BR10100085	10-1000	+44	+ 73	15	8.0	750	+29	OL1	3
BR10100086	10-1000	+46	+ 85	13	9.5	1500	+31	OL4	-
BR10100058	20-1000	+30	+ 45	11	4.2	60	+17	OL2	-
BR10120058	20-1000	+33	+ 70	10	5.3	120	+19	OL2	-
BR10120057	50-1200	+41	+ 66	24	4.8	850	+29	OL3	-
BR10120053	10-1200	+30	+ 42	11	5.4	50	+16	OL2	-
BR10120055	10-1200	+43	+ 72	15	8.5	750	+30	OL1	3
BR10120056	10-1200	+45	+ 84	13	10.0	1500	+31	OL4	-
BR02150078	20-2000	+38	+ 53	12	4.2	175	+26	OL2	-
BR10200060	30-2000	+38	+ 52	21	3.4	250	+26	OL2	-
BR10200064	100-2000	+37	+ 53	23	3.8	300	+26	OL2	-
BR00200072	1-2000	+30	+ 41	16	7.0	100	+15	OL2	-

Specifications Subject To Change Without Notice

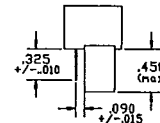
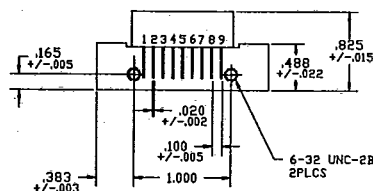
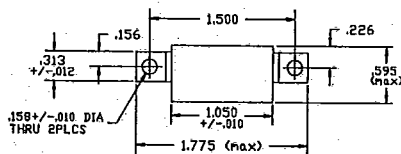
100



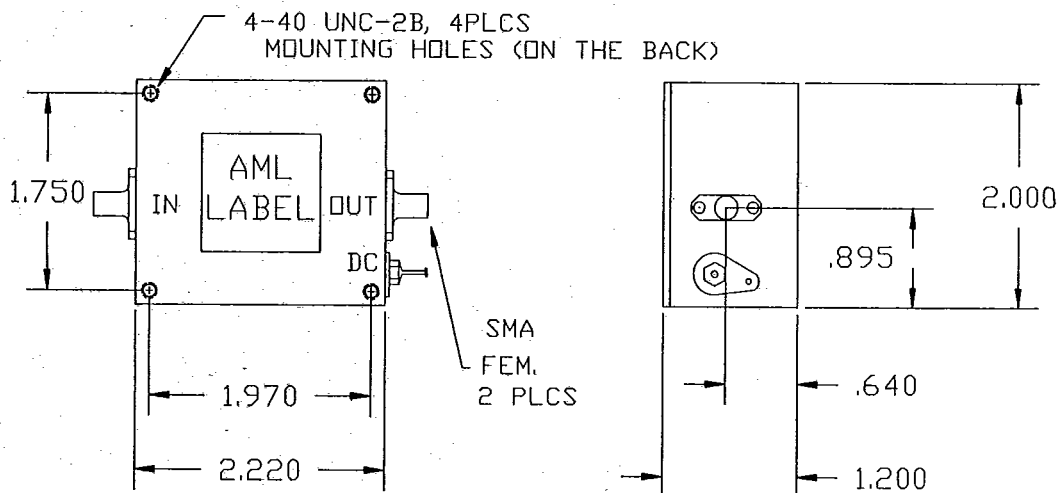
Pin Configurations



Outline Drawings



OL 1



OL 2