

PARAMETERS

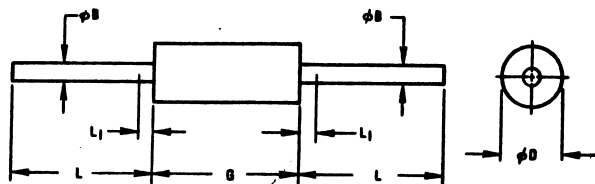
1N3728

SI RECTIFIER, 100mA < I(O)/I(F) ≤ 200mA

Description: Si Rectifier, 100mA < I(O)/I(F) ≤ 200mA

Manufacturer..... many
 Mil/High-Rel? (Y/N).....
 I(out) (If AVG) Max..... 200m
 @Temp. (test) (°C).....
 VRRM..... 400
 1-Cycle Surge Current (A)..... 1.0
 Vf Max..... 1.2
 @If (test)..... 400m
 @Temp. (test) for Vf).....
 Ir @25°C..... .10u
 @Volts (test) (V)..... 400
 Ir @ Diff. Temp (A)..... 10u
 @Temp (test) (°C)..... 150
 Oper. Temp (°C) Max..... 200J
 Pkg Style..... DO-7
 Surface Mounted (Y/N)..... N

J Junction Temperature \propto It(rms)

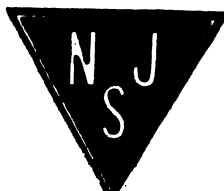


MILLIMETER DIMENSIONS ARE DERIVED FROM ORIGINAL INCH DIMENSIONS

SYMBOL	INCHES		MILLIMETERS		NOTES
	MIN.	MAX.	MIN.	MAX.	
BB	.018	.022	0.458	0.558	-
BD	.085	.107	2.16	2.71	1
G	.230	.300	5.85	7.62	1
L	1.000	-	25.40	-	-
L1	-	.050	-	1.27	2

NOTES:

1. PACKAGE CONTOUR OPTIONAL WITHIN CYLINDER OF DIAMETER BD AND LENGTH G. SLUGS, IF ANY, SHALL BE INCLUDED WITHIN THIS CYLINDER BUT SHALL NOT BE SUBJECT TO THE MINIMUM LIMIT OF BD.
2. LEAD DIAMETER NOT CONTROLLED IN THIS ZONE TO ALLOW FOR FLASH, LEAD FINISH BUILD-UP, AND MINOR IRREGULARITIES OTHER THAN SLUGS.



NJ Semi-Conductors reserves the right to change test conditions, parameter limits and package dimensions without notice. Information furnished by NJ Semi-Conductors is believed to be both accurate and reliable at the time of going to press. However NJ Semi-Conductors assumes no responsibility for any errors or omissions discovered in its use. NJ Semi-Conductors encourages customers to verify that datasheets are current before placing orders.