

**PLEASE CHECK WWW.MOLEX.COM FOR LATEST PART INFORMATION**

**Part Number:** [0191930116](#)  
**Status:** **Active**  
**Description:** VersaKrimp™ Ring Tongue Terminal for 10-12 AWG Wire

**Documents:**

[Drawing \(PDF\)](#) [RoHS Certificate of Compliance \(PDF\)](#)

**Agency Certification**

CSA LR18689  
 UL E32244

**General**

Product Family Ring and Spade Terminals  
 Series [19193](#)  
 Crimp Quality Equipment Yes  
 Mil-Spec N/A  
 Product Name VersaKrimp™  
 Type Ring

**Physical**

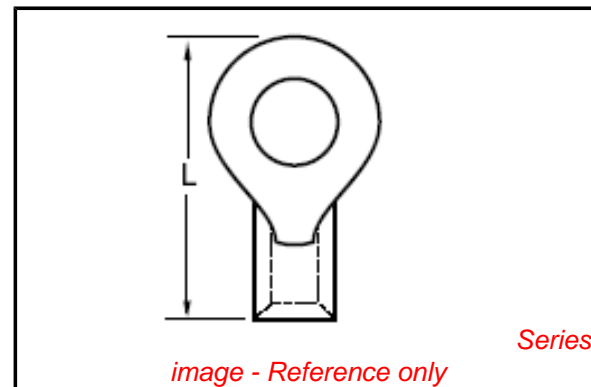
Barrel Type Closed - Brazed  
 Insulation None  
 Material - Plating Mating Tin  
 Packaging Type Bag  
 Plating min: Mating (µin) 100  
 Plating min: Mating (µm) 2.5  
 Plating min: Termination (µin) 100  
 Plating min: Termination (µm) 2.5  
 Stud Size 1/4" (M6)  
 Termination Interface: Style Crimp or Compression  
 Wire Size AWG 10, 12  
 Wire Size mm² 3.00 - 5.40

**Material Info**

Old Part Number C-330-14

**Reference - Drawing Numbers**

Sales Drawing SD-19193-024



**EU RoHS**

**ELV and RoHS Compliant**  
**REACH SVHC Contains SVHC: No**  
**Halogen-Free Status**

**China RoHS**



**Halogen-Free**

**Need more information on product environmental compliance?**

Email [productcompliance@molex.com](mailto:productcompliance@molex.com)  
 For a multiple part number RoHS Certificate of Compliance, [click here](#)

Please visit the [Contact Us](#) section for any non-product compliance questions.

**Search Parts in this Series**

[19193Series](#)

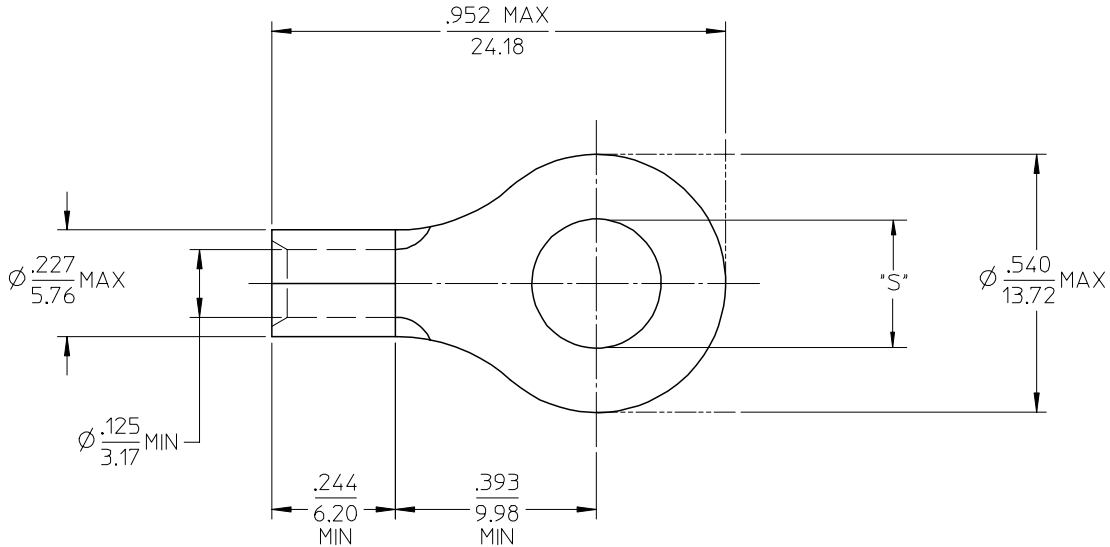
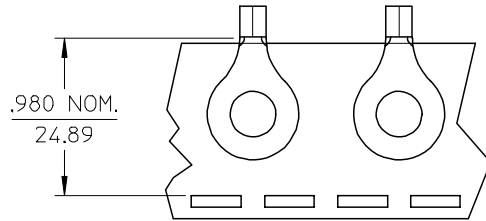
**Application Tooling | [FAQ](#)**

*Tooling specifications and manuals are found by selecting the products below. Crimp Height Specifications are then contained in the Application Tooling Specification document.*

**Global**

| Description                                    | Product #                  |
|--|----------------------------|
| Hand Crimp Tool                                | <a href="#">0640030100</a> |
| Crimp Head for the AT-200™ Pneumatic Hand Tool | <a href="#">0640070100</a> |

| MATERIAL NO. LOOSE PIECE | ENG. NO. | MATERIAL NO. TAPE MOUNTED | ENG. NO.  | STUD SIZE | ±.003 "S" | STOCK THICKNESS |
|--------------------------|----------|---------------------------|-----------|-----------|-----------|-----------------|
| 191930114                | C-330-10 | 191930115                 | C-330-10T | 10        | .198      | .040 (1.02)     |
| 191930116                | C-330-14 | 191930118                 | C-330-14T | 1/4       | .265      |                 |
| 191930120                | C-330-56 | 191930122                 | C-330-56T | 5/16      | .328      |                 |



# SALES DRAWING

- NOTE(S):
1. MATERIAL: COPPER
  2. PLATING: ELECTROPLATE TIN
  3. ALL DIMENSIONS IN INCHES/(MM).
  4. WIRE SIZE: 12-10 AWG  
4.0-6.0 MM<sup>2</sup>

|                               |                     |   |                     |                         |             |                 |                                       |        |                           |                       |                        |                            |  |  |  |  |  |
|-------------------------------|---------------------|---|---------------------|-------------------------|-------------|-----------------|---------------------------------------|--------|---------------------------|-----------------------|------------------------|----------------------------|--|--|--|--|--|
| REVISED/UPDATE TO MX STD      | EC NO: ETC2003-0315 | DRWN:DMYRICK 2003/08/20   | CHKD:HEB 2003/08/21 | APPR:RDEROSS 2003/08/21 | DESCRIPTION | QUALITY SYMBOLS | GENERAL TOLERANCES (UNLESS SPECIFIED) |        | SCALE 4:1                 | DESIGN UNITS INCH     | THIRD ANGLE PROJECTION | REVISE ON CAD ONLY         |  |  |  |  |  |
|                               |                     |   |                     |                         |             | ▼ = 0<br>▽ = 0  | 4 PLACES                              | mm     | INCH                      | DIMENSION STYLE IN/MM |                        | TITLE RING TONGUE TERMINAL |  |  |  |  |  |
|                               |                     |   |                     |                         |             |                 | 3 PLACES                              | ± ---  | ± ---                     | DRAWN BY DLM          | DATE 03/06/13          | VERSAKRIMP                 |  |  |  |  |  |
|                               |                     |   |                     |                         |             |                 | 2 PLACES                              | ± 0.13 | ± .01                     | CHECKED BY HEB        | DATE 03/06/13          | 12-10 AWG                  |  |  |  |  |  |
| ANGULAR ±1/2°                 |                     | DRAFT WHERE APPLICABLE  |                     | APPROVED BY RWD         |             | DATE 03/06/13   | MATERIAL NO. (SEE CHART)              |        | DOCUMENT NO. SD-19193-024 | SHEET NO. 1 OF 1      |                        |                            |  |  |  |  |  |
| MUST REMAIN WITHIN DIMENSIONS |                     | THIS DRAWING CONTAINS INFORMATION THAT IS PROPRIETARY TO MOLEX INCORPORATED AND SHOULD NOT BE USED WITHOUT WRITTEN PERMISSION |                     |                         |             |                 |                                       |        |                           |                       |                        |                            |  |  |  |  |  |