



Features

- Frequency Range: 10~3000MHz
- Standard Hermetic Package TO-8C, SMO-8C
- Operating Temperature Range: -55°C ~ +85°C

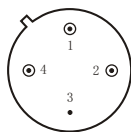
Specifications (50 Ω, V_{CC} = +12V, T_A = -55°C ~ +85°C)

Parameter	Symbol	Unit	Guaranteed	Typical
Frequency Range	f _L ~f _H	MHz	10~3000	10~3500
Gain	G _p	dB	11.0	12.0
Gain Flatness	ΔG _p	dB	1.5	1.0
Noise Figure	F _n	dB	3.5 Δ #	2.8
Input VSWR	VSWR _i	---	2.0:1Δ	1.7:1
Output VSWR	VSWR _o	---	2.0:1Δ	1.8:1
Output Power @ 1dB Compression	P-1	dBm	19.0Δ	20.0
DC Current	I _{cc}	mA	---	75

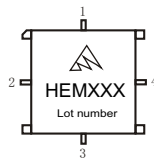
“Δ” T_A = 24 ± 1°C; “#” f ≥ 500MHz

Maximum Rating

- DC Voltage : +13.5V_{DC}
- RF Input: +15dBm
- Storage Temp: +125°C



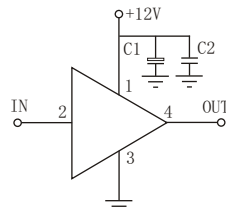
TO-8C



SMO-8C

Application Notes

1. Typical application shown as right, C₁ = 10~33 μF; C₂ = 3300~6800pF;
2. See assembly section for mounting information
3. Connectorized package(SMA-1) available
4. ESD observe handling precautions



Typical Curves

