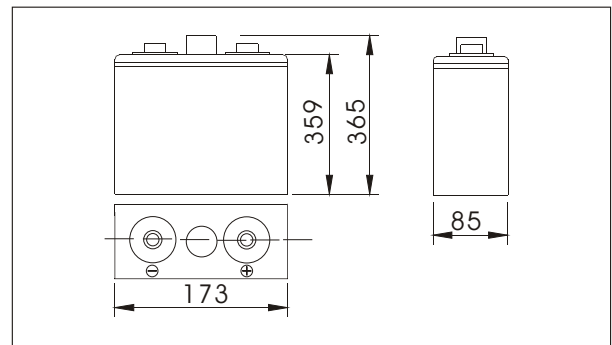




SWR21700(2V170AH)



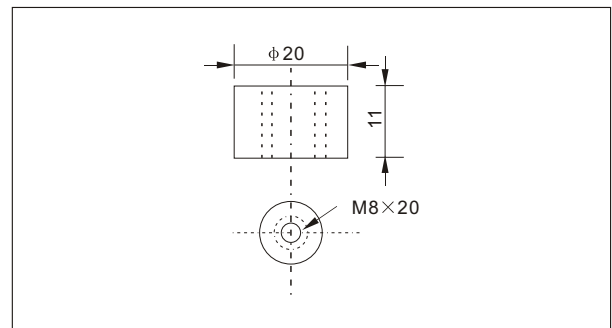
Outer dimensions (mm)



Specifications

Nominal Voltage	2V	
Rated capacity (10 hour rate)	170 Ah	
Dimensions	Total Height	365 mm (14.4 inches)
	Height	359 mm (14.1 inches)
	Length	173 mm (6.8 inches)
	Width	85mm (3.3 inches)
Weight Approx	13.5Kg (29.83 lbs)	

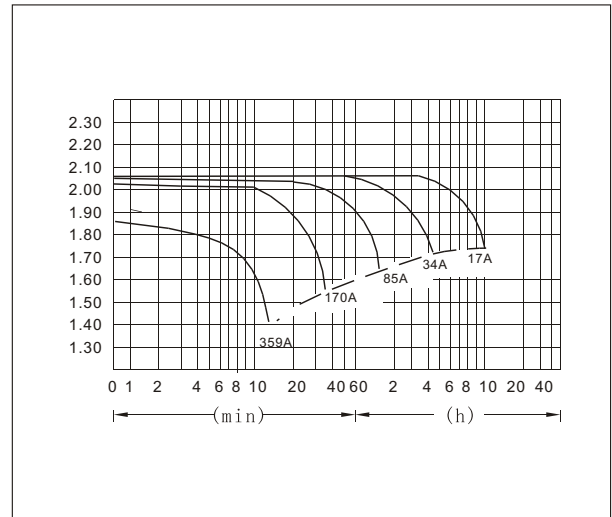
Terminal Type (mm)



Characteristics

Capacity 25°C(77°F)	10 hour rate(17 A)	170 AH
	5 hour rate(27.2A)	136 AH
	1 hour rate(102A)	102 AH
Internal Resistance	Full charged Battery at 25°C(77°F)	Approx 0.5 mΩ
Capacity affected by Temperature (10hour rate)	40°C(104°F)	102%
	25°C(77°F)	100%
	0°C(32°F)	85%
	-15°C(5°F)	65%
Self-Discharge at 25°C(77°F)	Capacity after 3 month storage	91%
	Capacity after 6 month storage	82%
	Capacity after 12 month storage	64%
Terminal	T37	
Charge (constant Voltage)	Cycle	Initial Charging Current less than 68 A Voltage 2.35-2.40V
	Float	Voltage 2.25-2.30V

Discharge Curves 25°C(77°F)



Constant Current(Amp) and Constant Power(Watt) Discharge Table at 25°C(77°F)

Time		5min	10min	15min	30min	1h	2h	3h	4h	5h	8h	10h	20h
1.60V	A	545	359	289	194	102	60	44	34.0	28.1	19.9	17.9	9.6
	W	937	638	517	347	184	109	81	63.8	53.2	38.0	34.4	18.7
1.70V	A	527	324	272	185	96	57	43	33.2	27.5	19.4	17.5	9.4
	W	939	602	508	347	181	109	82	64.2	53.5	37.8	34.3	18.3
1.75V	A	510	290	238	173	93	55	41	32.6	27.2	19.2	17.2	9.4
	W	929	549	453	333	179	107	81	63.6	53.1	37.7	33.9	18.4
1.80V	A	492	273	221	160	90	54	40	32.1	26.5	18.7	17.0	9.2
	W	919	524	425	309	174	106	80	63.2	52.2	36.9	33.7	18.2
1.85V	A	475	256	204	143	87	53	39	31.3	25.8	18.2	16.2	8.7
	W	898	493	396	278	170	104	77	62.1	51.4	36.3	32.5	17.5