

LO566THR1-60H

Features

All Plastic Mold Type
High Luminous Intensity
Low Current Requirement

Applications

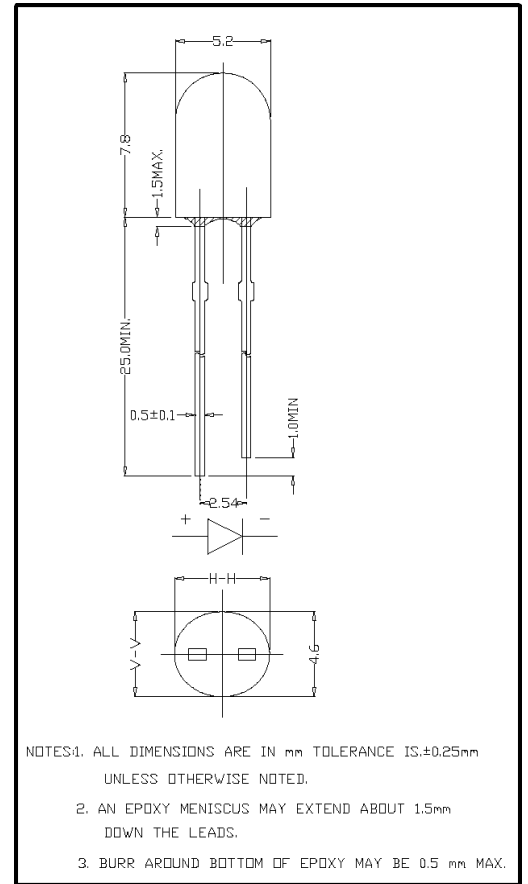
Backlighting
Full Color/RGB Video Signs
VMS
Time/Temperature Boards

Maximum Ratings (Ta=25°C)

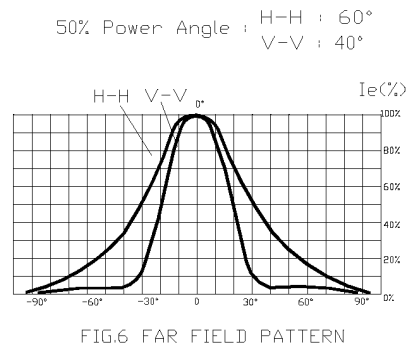
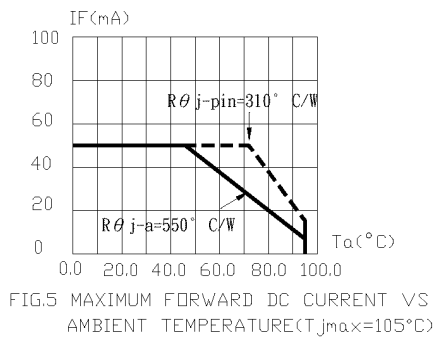
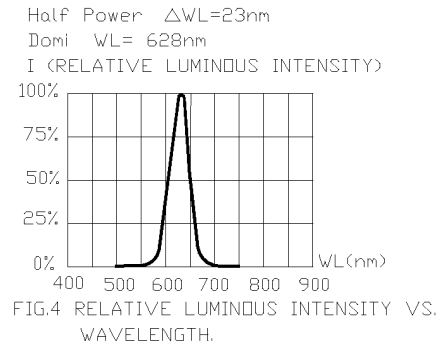
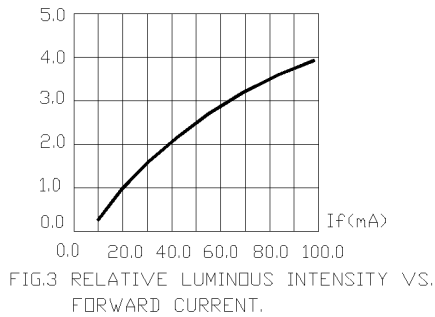
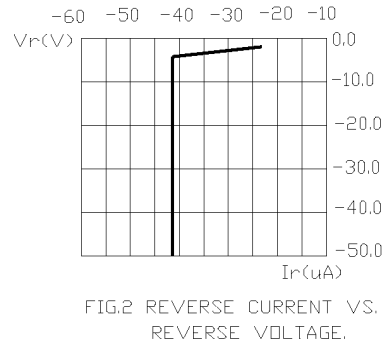
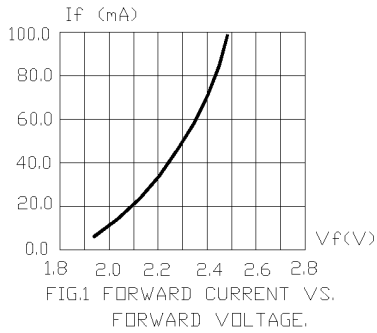
Characteristic	Symbol	Max.	Unit
Forward Current	I _F	50	mA
Reverse Voltage	V _R	5	V
Power Dissipation	P _D	150.00	mW
Operating Temperature	T _{opr}	-40 ~ +95	°C
Storage Temperature	T _{stg}	-40 ~ +95	°C
Soldering Temperature	T _{sol}	260	°C
Soldering Time	-	for 5 sec. max	-

Opto-Electrical Characteristics (Ta=25°C)

Characteristic	Symbol	Test Condition	Min	Typ	Max	Unit
Forward Voltage	V _F	I _F =20mA	1.70	2.10	2.60	V
Reverse Current	I _R	V _R =5V	-	-	100	μA
Luminous Intensity	I _v	I _F =20mA	550.00	1000.00	-	mcd
Viewing Angle	2θ ^{1/2}	-	-	60° x 40°	-	deg.
Peak Wavelength	λ _p	I _F =20mA	-	639	-	nm
Dominant Wavelength	λ _d	I _F =20mA	-	628	-	nm
Spectral Line Half Width	Δλ	I _F =20mA	-	23	-	nm



LO566THR1-60H Graphs



1. Cathode PAD Area (0.18 × 0.18inch²)
2. Height above nominal seating plane in inches(0.3inch)