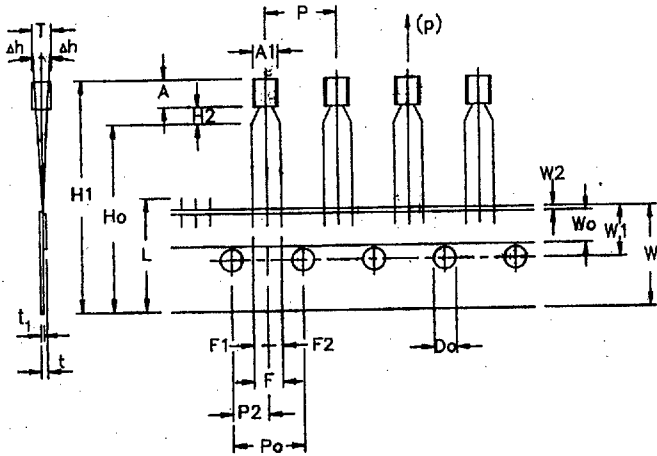
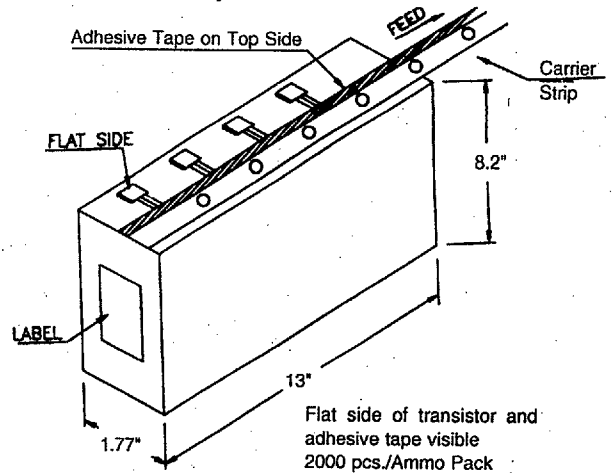


Maximum Ratings							Electrical Characteristics (Ta=25°C, Unless Otherwise Specified)																	
Type No.	V _{CBO} (V)	V _{CEO} (V)	V _{EBO} (V)	P _D (W)	I _C (A)	I _{CBO} (μA)	V _{CB} (V)	I _{CES} (μA)	V _{CE} (V)	h _{FE}	@	I _C & V _{CE} (mA) (V)	V _{CE(SAT)} (V)	V _{BE(SAT)} (V)	I _C (mA)	C _{ob} (pF)	f _i (MHz)	@	I _C (mA)	t _{off} (ns)	N _F (dB)	@ Freq (MHz)	C _{re} (pF)	CDIL Case Style
	Min	Min	Min	@ Tc=25°C	Max	Max	Max	Max	Min	Max	Min	Max	Max	Min	Max	Typ	Max	Min	Typ	Max	Max	Max	Max	Max
CP756	200	200	5	0.75	0.5	0.1	160			40	10	5	0.5	1.0	100	20	30		10					TO-92
CP757	300	300	5	0.75	0.5	0.1	200			40	10	5	0.5	1.0	100	20	30		10					TO-92
CP788B	15	15	5	0.75	3.0	0.1	10			500	1500	10	0.5		1000									TO-92
CSA562	35	30	5	0.5	0.5	0.1	35			70	240	100	0.25		100	13	200		20					TO-92-1
CSA5620	35	30	5	0.5	0.5	0.1	35			70	140	100	0.25		100	13	200		20					TO-92-1
CSA562Y	35	30	5	0.5	0.5	0.1	35			120	240	100	0.25		100	13	200		20					TO-92-1
CSA643	40	20	5	0.5	0.5	0.1	25			40	400	100	0.4		1.3	500								TO-92
CSA643G	40	20	5	0.5	0.5	0.1	25			200	400	100	0.4		1.3	500								TO-92
CSA643O	40	20	5	0.5	0.5	0.1	25			70	140	100	0.4		1.3	500								TO-92
CSA643R	40	20	5	0.5	0.5	0.1	25			40	80	100	0.4		1.3	500								TO-92
CSA643Y	40	20	5	0.5	0.5	0.1	25			120	240	100	0.4		1.3	500								TO-92
CSA673	35	35	4	0.4	0.5	0.5	20			60	320	10	0.6		150									TO-92-1
CSA673B	35	35	4	0.4	0.5	0.5	20			60	120	10	0.6		150									TO-92-1
CSA673C	35	35	4	0.4	0.5	0.5	20			100	200	10	0.6		0.87	150								TO-92-1
CSA673D	35	35	4	0.4	0.5	0.5	20			160	320	10	0.6		0.87	150								TO-92-1
CSA708	80	60	8	0.8	0.7	0.1	60			40	240	50	0.7		1.1	500	13	50		50				TO-92
CSA708O	80	60	8	0.8	0.7	0.1	60			70	140	50	0.7		1.1	500	13	50		50				TO-92
CSA708R	80	60	8	0.8	0.7	0.1	60			40	80	50	0.7		1.1	500	13	50		50				TO-92
CSA708Y	80	60	8	0.8	0.7	0.1	60			120	240	50	0.7		1.1	500	13	50		50				TO-92
CSA719	30	25	5	0.625	0.5	0.1	20			85	340	150	0.6		1.5	300	15	200		50				TO-92-1
CSA719Q	30	25	5	0.625	0.5	0.1	20			85	170	150	0.6		1.5	300	15	200		50				TO-92-1
CSA719R	30	25	5	0.625	0.5	0.1	20			120	240	150	0.6		1.5	300	15	200		50				TO-92-1
CSA719S	30	25	5	0.625	0.5	0.1	20			170	300	150	0.6		1.5	300	15	200		50				TO-92-1
CSA720	60	50	5	0.625	0.5	0.1	20			85	340	150	0.6		1.5	300	15	200		50				TO-92-1
CSA720Q	60	50	5	0.625	0.5	0.1	20			85	170	150	0.6		1.5	300	15	200		50				TO-92-1

MECHANICAL DATA



Ammo Pack Style



Item	Symbol	Specification				Remarks
		Min.	Nom.	Max.	Tol.	
Body Width	A1	4.0		4.8		
Body Height	A	4.8		5.2		
Body Thickness	T	3.9		4.2		
Pitch of Component	P		12.7		±1	
Feed Hole Pitch	Po		12.7		±0.3	Cumulative Pitch Error 1.0 mm/20 Pitch
Feed Hole Centre to Component Centre	P2		6.35		±0.4	To be measured at bottom of Clinch
Distance between Outer Leads	F		5.08		±0.6	
Component Alignment	Δh		0	1	-0.2	At Top of Body
Tape Width	W		18		±0.5	
Hold-Down Tape Width	W0		6		±0.2	
Hole Position	W1		9		±0.7	
Hold-Down Tape Position	W2		0.5		±0.2	
Lead Wire Clinch Height	Ho		16		±0.5	
Component Height	H1			32.25		
Length of Snipped leads	L			11.0		
Feed Hole Diameter	Do		4		±0.2	
Total Tape Thickness	t			1.2		t ₁ 0.3-0.6
Lead-to-Lead Distance	F1,F2		2.54		+0.4 -0.1	
Clinch Height	H2			3		
Pull-out Force	(p)	6N				

Dimensions in m.m.

- Notes:**
1. Maximum alignment deviation between leads not to be greater than 0.2 mm.
 2. Maximum non-cumulative variation between tape feed holes shall not exceed 1 mm in 20 pitches
 3. Hold-down tape not to exceed beyond the edge(s) of carrier tape and there shall be no exposure of adhesive.
 4. No more than 3 consecutive missing components permitted.
 5. A tape trailer, having at least three feed holes is required after the last component.
 6. Splices shall not interfere with the sprocket feed holes.