

MICRO ELECTRONICS

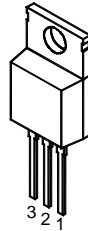
ML7900 SERIES

3-TERMINAL NEGATIVE VOLTAGE REGULATOR

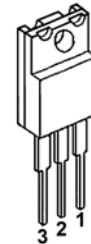
The ML7900 series are 3-Terminal Negative Voltage Regulators. These negative regulators are intended as complements to the popular ML7800 series of positive voltage regulations, and they are available in the same voltage options from -5V to -24V. The ML7900 series enjoy internal current-limiting, safe-area protection, and thermal shutdown, making them virtually indestructible.

■ Package Outline

TO-220
(7900A)



1. OUT
2. IN
3. COMMON



TO-220F
(7900FA)

ABSOLUTE MAXIMUM RATINGS

($T_a=25^{\circ}\text{C}$)

PARAMETER	SYMBOL	Maximum Rating		UNIT	
Input Voltage	V_{IN}	ML7905 to ML7909	-35	V	
		ML7912 to ML7920	-35		
		ML7924	-40		
Storage Temperature Range	T_{stg}	-40 to +125		$^{\circ}\text{C}$	
Operating Temperature Range		Operating Junction Temperature	T_j	-30 to +125	$^{\circ}\text{C}$
		Operating Ambient Temperature	T_{opr}	-30 to +75	
Power Dissipation	P_d	15($T_c \leq 45^{\circ}\text{C}$)		W	

THERMAL RESISTANCE

Thermal Resistance	Junction-to-Ambient Temperature		θ_{ja}	60	$^{\circ}\text{C}/\text{W}$
	Junction-to-Case				

ELECTRICAL CHARACTERISTICS

($T_j=25^{\circ}\text{C}$, $C_1=0.33 \mu\text{F}$, $C_o=0.1 \mu\text{F}$)

Measurement is to be conducted in pulse testing.

PARAMETER	SYMBOL	TEST CONDITIONS			MIN.	TYP.	MAX.	UNIT
ML7905A / ML7905FA								
Output Voltage	V_o	$V_{IN}=-10\text{V}$	$I_o=0.5\text{A}$		-4.8	-5.0	-5.2	V
Quiescent Current	I_Q	$V_{IN}=-10\text{V}$	$I_o=0\text{mA}$		-	2.2	5.0	mA
Load Regulation	$\Delta V_o / I_o$	$V_{IN}=-10\text{V}$	$I_o=0.005\text{A}$ to 1.5A		-	50	100	mV
Line Regulation	$\Delta V_o / V_{in}$	$V_{IN}=-7$ to -25V	$I_o=0.5\text{A}$		-	12.5	100	mV
Ripple Rejection	RR	$V_{IN}=-10\text{V}$	$I_o=0.5\text{A}$	$E_{in}=2\text{Vp-p}$ $f=120\text{Hz}$	54	60	-	dB
Output Noise Voltage	V_{NO}	$V_{IN}=-10\text{V}$	$I_o=0.5\text{A}$	BW=10Hz to 100KHz	-	125	-	μV
Average Temperature Coefficient of Output Voltage	$\Delta V_o / \Delta T$	$V_{IN}=-10\text{V}$	$I_o=5\text{mA}$		-	-0.4	-	mV/ $^{\circ}\text{C}$



MICRO ELECTRONICS LTD.

美科有限公司

7/F, Enterprise Square Three, 39 Wang Chiu Road, Kowloon Bay, Kowloon, Hong Kong.
TEL: (852) 23430181 FAX: (852) 23410321
HOMEPAGE: <http://www.microelectr.com.hk>

REV B

ELECTRICAL CHARACTERISTICS

(T_j=25°C, C₁=0.33 μF, C_o=0.1 μF)

Measurement is to be conducted in pulse testing.

PARAMETER	SYMBOL	TEST CONDITIONS				MIN.	TYP.	MAX.	UNIT
ML7906A / ML7906FA									
Output Voltage	V _o	V _{IN} =-11V	I _o =0.5A			-5.75	-6.0	-6.25	V
Quiescent Current	I _q	V _{IN} =-11V	I _o =0mA			-	2.2	5.0	mA
Load Regulation	Δ V _o I _o	V _{IN} =-11V	I _o =0.005A to 1.5A			-	50	120	mV
Line Regulation	Δ V _o V _{in}	V _{IN} =-8 to -25V	I _o =0.5A			-	12.5	120	mV
Ripple Rejection	RR	V _{IN} =-11V	I _o =0.5A	Є _{in} =2V _{p-p}	f=120Hz	54	60	-	dB
Output Noise Voltage	V _{NO}	V _{IN} =-11V	BW=10Hz to 100KHz		I _o =0.5A	-	150	-	μV
Average Temperature Coefficient of Output Voltage	Δ V _o / Δ T	V _{IN} =-11V	I _o =5mA			-	-0.4	-	mV/°C
ML7908A / ML7908FA									
Output Voltage	V _o	V _{IN} =-14V	I _o =0.5A			-7.7	-8.0	-8.3	V
Quiescent Current	I _q	V _{IN} =-14V	I _o =0mA			-	2.2	5.0	mA
Load Regulation	Δ V _o I _o	V _{IN} =-14V	I _o =0.005A to 1.5A			-	60	160	mV
Line Regulation	Δ V _o V _{in}	V _{IN} =-10.5 to -25V	I _o =0.5A			-	12.5	160	mV
Ripple Rejection	RR	V _{IN} =-14V	I _o =0.5A	Є _{in} =2V _{p-p}	f=120Hz	54	60	-	dB
Output Noise Voltage	V _{NO}	V _{IN} =-14V	BW=10Hz to 100KHz		I _o =0.5A	-	200	-	μV
Average Temperature Coefficient of Output Voltage	Δ V _o / Δ T	V _{IN} =-14V	I _o =5mA			-	-0.7	-	mV/°C
ML7909A / ML7909FA									
Output Voltage	V _o	V _{IN} =-15V	I _o =0.5A			-8.65	-9.0	-9.35	V
Quiescent Current	I _q	V _{IN} =-15V	I _o =0mA			-	2.2	5.0	mA
Load Regulation	Δ V _o I _o	V _{IN} =-15V	I _o =0.005A to 1.5A			-	60	180	mV
Line Regulation	Δ V _o V _{in}	V _{IN} =-11.5 to -25V	I _o =0.5A			-	8	180	mV
Ripple Rejection	RR	V _{IN} =-15V	I _o =0.5A	Є _{in} =2V _{p-p}	f=120Hz	54	60	-	dB
Output Noise Voltage	V _{NO}	V _{IN} =-15V	BW=10Hz to 100KHz		I _o =0.5A	-	250	-	μV
Average Temperature Coefficient of Output Voltage	Δ V _o / Δ T	V _{IN} =-15V	I _o =5mA			-	-0.8	-	mV/°C
ML7912A / ML7912FA									
Output Voltage	V _o	V _{IN} =-19V	I _o =0.5A			-11.5	-12.0	-12.5	V
Quiescent Current	I _q	V _{IN} =-19V	I _o =0mA			-	2.7	6.0	mA
Load Regulation	Δ V _o I _o	V _{IN} =-19V	I _o =0.005A to 1.5A			-	60	240	mV
Line Regulation	Δ V _o V _{in}	V _{IN} =-14.5 to -30V	I _o =0.5A			-	5	240	mV
Ripple Rejection	RR	V _{IN} =-19V	I _o =0.5A	Є _{in} =2V _{p-p}	f=120Hz	54	60	-	dB
Output Noise Voltage	V _{NO}	V _{IN} =-19V	BW=10Hz to 100KHz		I _o =0.5A	-	300	-	μV
Average Temperature Coefficient of Output Voltage	Δ V _o / Δ T	V _{IN} =-19V	I _o =5mA			-	-0.8	-	mV/°C

REV B

ELECTRICAL CHARACTERISTICS

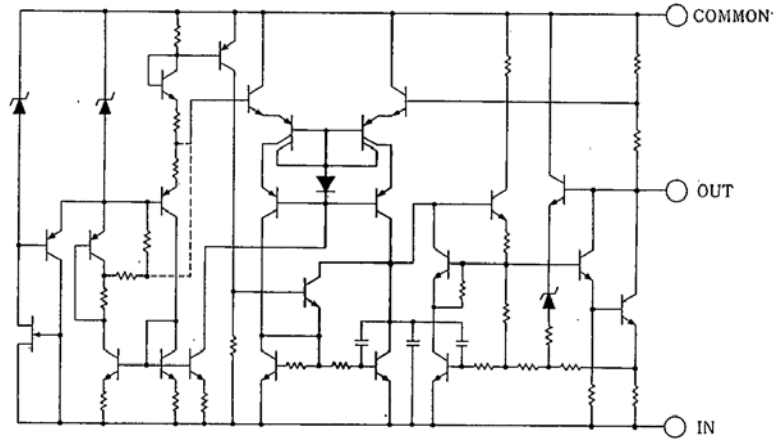
(Tj=25°C, C1=0.33 μF, Co=0.1 μF)

Measurement is to be conducted in pulse testing.

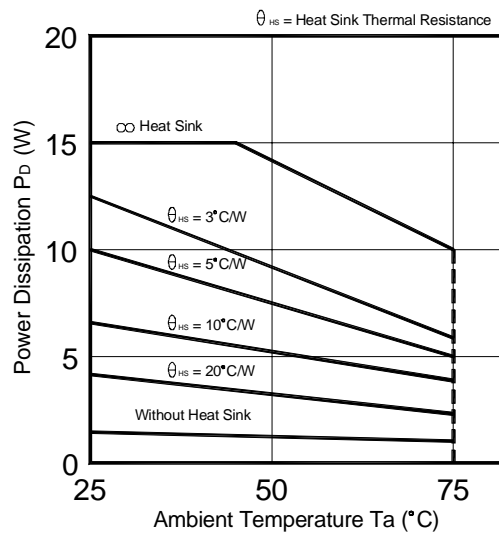
PARAMETER	SYMBOL	TEST CONDITIONS				MIN.	TYP.	MAX.	UNIT
ML7915A / ML7915FA									
Output Voltage	Vo	VIN=-23V	Io=0.5A						
Quiescent Current	Iq	VIN=-23V	Io=0mA		-14.4	-15.0	-15.6	V	
Load Regulation	Δ Vo Io	VIN=-23V	Io=0.005A to 1.5A		-	60	300	mV	
Line Regulation	Δ Vo Vin	VIN=-17.5 to -30V	Io=0.5A		-	5	300	mV	
Ripple Rejection	RR	VIN=-23V	Io=0.5A	Ein=2Vp-p f=120Hz	54	60	-	dB	
Output Noise Voltage	VNo	VIN=-23V	BW=10Hz to 100KHz	Io=0.5A	-	375	-	μV	
Average Temperature Coefficient of Output Voltage	Δ Vo / Δ T	VIN=-23V	Io=5mA		-	-1	-	mV/°C	
ML7918A / ML7918FA									
Output Voltage	Vo	VIN=-27V	Io=0.5A						
Quiescent Current	Iq	VIN=-27V	Io=0mA		-17.3	-18.0	-18.7	V	
Load Regulation	Δ Vo Io	VIN=-27V	Io=0.005A to 1.5A		-	60	360	mV	
Line Regulation	Δ Vo Vin	VIN=-21 to -33V	Io=0.5A		-	5	360	mV	
Ripple Rejection	RR	VIN=-27V	Io=0.5A	Ein=2Vp-p f=120Hz	54	60	-	dB	
Output Noise Voltage	VNo	VIN=-27V	BW=10Hz to 100KHz	Io=0.5A	-	450	-	μV	
Average Temperature Coefficient of Output Voltage	Δ Vo / Δ T	VIN=-27V	Io=5mA		-	-1	-	mV/°C	
ML7924A / ML7924FA									
Output Voltage	Vo	VIN=-33V	Io=0.5A						
Quiescent Current	Iq	VIN=-33V	Io=0mA		-23.0	-24.0	-25.0	V	
Load Regulation	Δ Vo Io	VIN=-33V	Io=0.005A to 1.5A		-	85	480	mV	
Line Regulation	Δ Vo Vin	VIN=-28 to -38V	Io=0.5A		-	5	480	mV	
Ripple Rejection	RR	VIN=-33V	Io=0.5A	Ein=2Vp-p f=120Hz	54	60	-	dB	
Output Noise Voltage	VNo	VIN=-33V	BW=10Hz to 100KHz	Io=0.5A	-	600	-	μV	
Average Temperature Coefficient of Output Voltage	Δ Vo / Δ T	VIN=-33V	Io=5mA		-	-1	-	mV/°C	

REV B

■ Equivalent Circuit

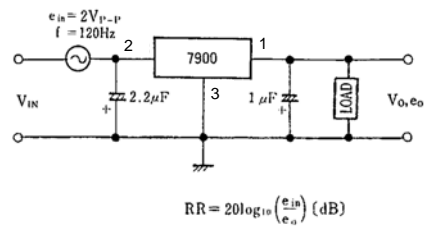
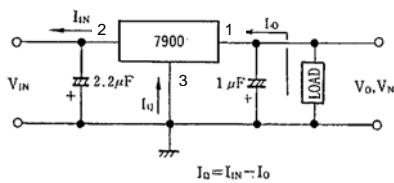


■ Power Dissipation vs. Ambient Temperature



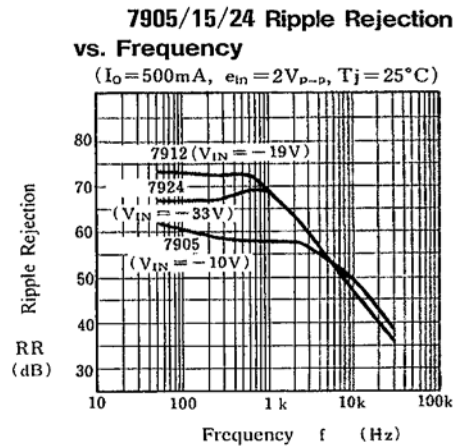
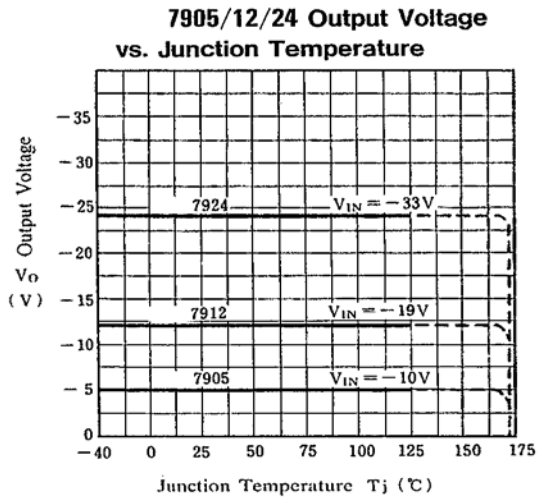
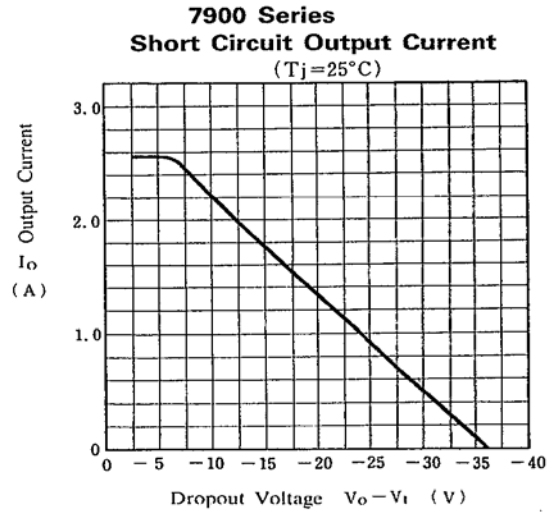
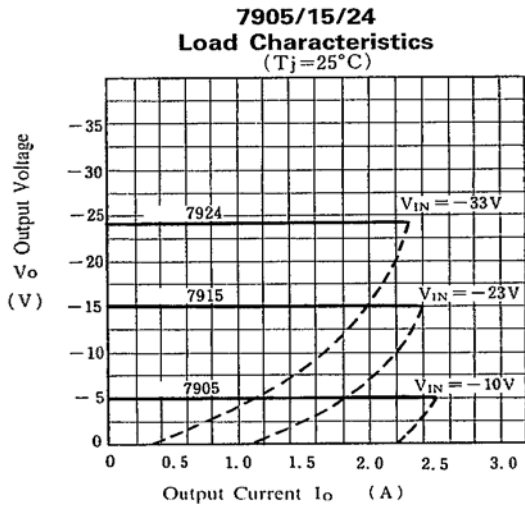
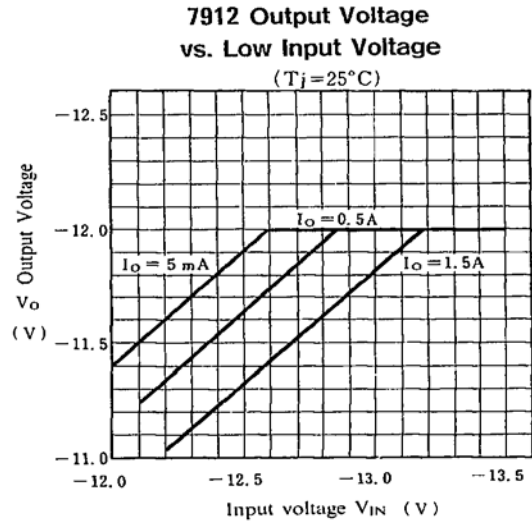
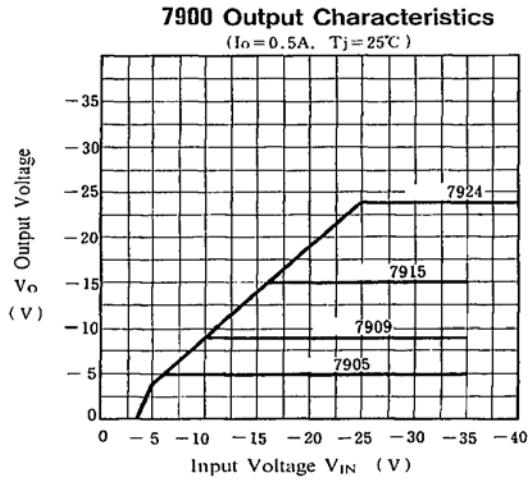
■ Test Circuit

1. Output Voltage, Line Regulation, Load Regulation, Quiescent Current, Average Temperature Coefficient of Output Voltage, Output Noise Voltage.
2. Ripple Rejection



REV B

■ Typical Characteristics

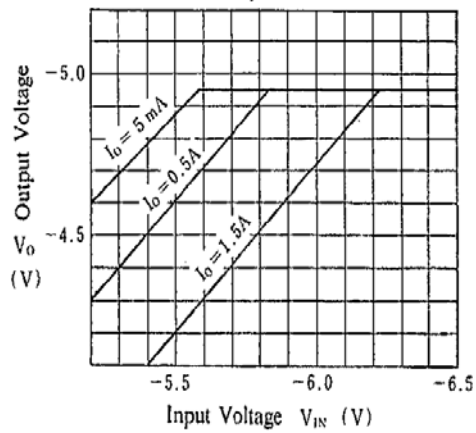


REV B

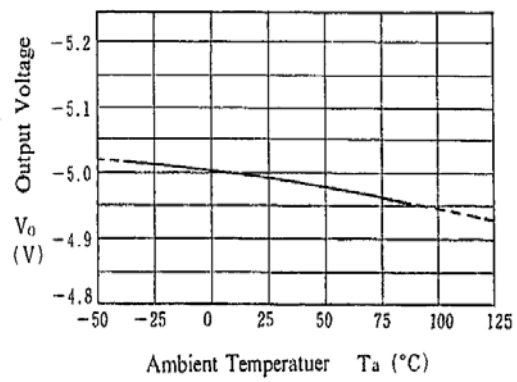
■ Typical Characteristics

7905 Dropout Characteristics

($T_j = 25^\circ\text{C}$)

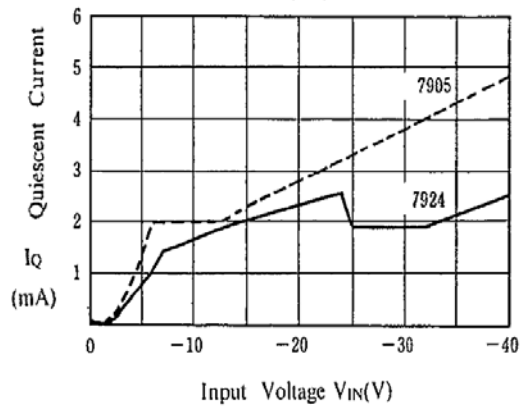


7905 Output Voltage vs. Temperature



Quiescent Current vs. Input Voltage

($I_o = 0\text{ mA}$, $T_j = 25^\circ\text{C}$)

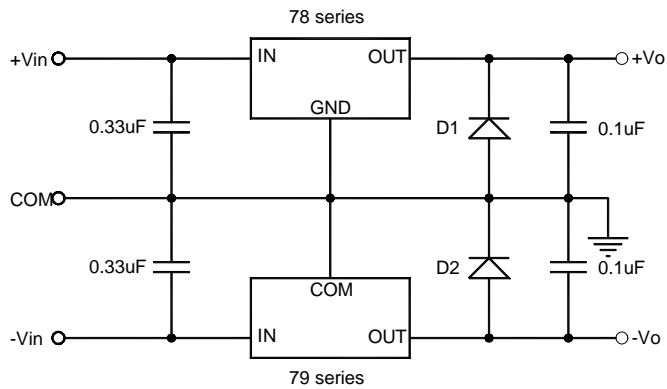


REV B

1. Application Circuit

In the following explain only the positive regulator unless otherwise specified. However they can apply to the negative voltage regulator by easy change.

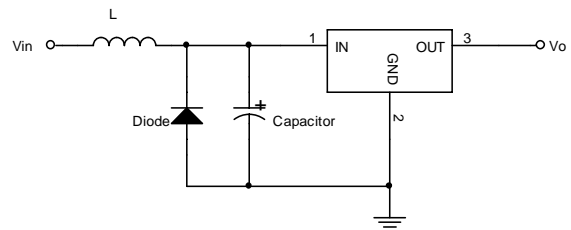
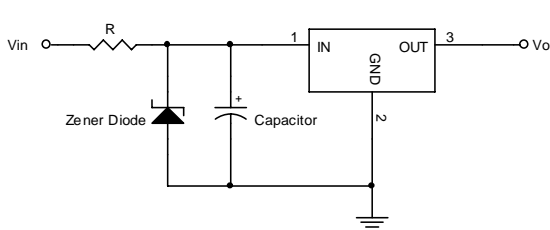
Positive/Negative Voltage Supply



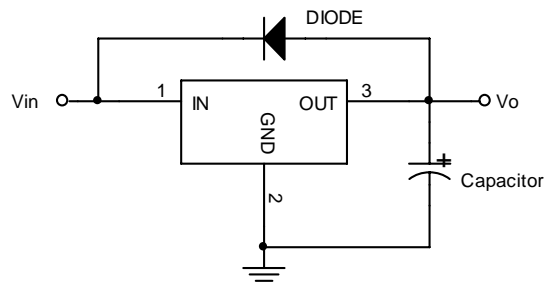
Note : In the above positive and negative power supply application, D1 and D2 should be connected. If D1 and D2 are not connected, either of positive or negative power supply circuit may not turns on.

2. Note in Application Circuit

- (1) If the higher voltage (above the rated value) or lower voltage (GND-0.5V) is supplied to the input terminals, the IC may be destroyed. To avoid such a case, a zener diode or other parts of the surge suppressor should be connected as shown below.



- (2) If the higher voltage than the input terminal is supplied to the output terminal, the IC may be destroyed. To avoid input terminal short to the GND or the stored voltage in the capacitor back to the output terminal, by the large value capacitor connecting to the output terminal application, the SBD should be required as shown below;



* In case of negative voltage regulator, reverse the SBD and capacitor direction.

REV B

3. Thermal Design

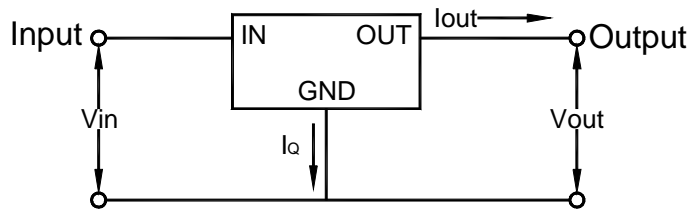
(1) Heat Producing

There are two kinds of heat producing (P_{LOSS-1} , P_{LOSS-2}) in three terminal regulator and the sum of them is total heat producing of IC (P_{LOSS}).

(1-1) P_{LOSS-1} : heat producing by own operation

Input voltage (V_{in}) and quiescent current (I_Q) produce the heat mentioned below equation.

$$P_{LOSS-1} = V_{in} \times I_Q$$



(1-2) P_{LOSS-2} : heat producing by output current and the input-output differential voltage.

Internal power transistor produces the heat mentioned following equation.

$$P_{LOSS-2} = (V_{in} - V_{out}) \times I_{out} \quad (W)$$

Therefore, the total heat producing P_{LOSS} is :

$$\begin{aligned} P_{LOSS} &= P_{LOSS-1} + P_{LOSS-2} \\ &= V_{in} \times I_Q + (V_{in} - V_{out}) \times I_{out} \quad (W) \end{aligned}$$

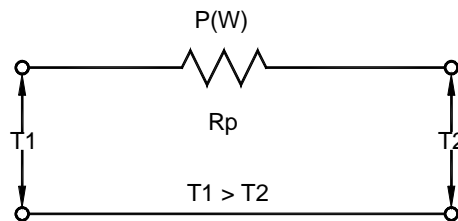
(2) Thermal Resistance

(2-1) Definition of Thermal Resistance : θ

Thermal resistance (θ) is a degree of heat radiation mentioned following equation.

$$\theta = \frac{T_1 - T_2}{P} \quad (^\circ C / W)$$

Heat Producing Quantity : P (W)
 Ambient Temperature or case temperature : T2 (°C)
 Heat Source Temperature : T1 (°C)



(2-2) Thermal resistance of TO-220

There are two kinds of thermal resistance of TO-220. One is " θ_{jc} " for the application with the heat sink, the other is " θ_{ja} " for the application without the heat sink.

θ_{jc} : thermal resistance between IC chip (junction point) and the package back side contacting with the heat sink.

θ_{ja} : thermal resistance between IC chip (junction point) and ambience.

REV B

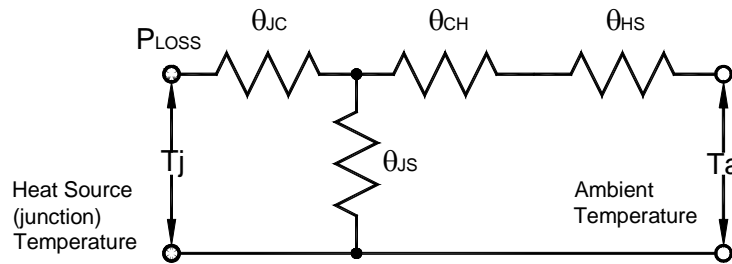
(3) Heat Radiation Balance

The heat produced in the IC is radiated to ambience through the package and the heat sink.

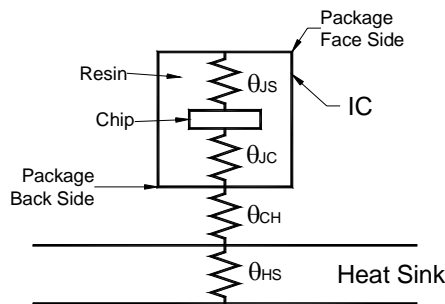
The quantity of the heat radiation depends on the heat source temperature, ambient temperature and the thermal resistance of the package.

(3-1) TO-220 with heat sink

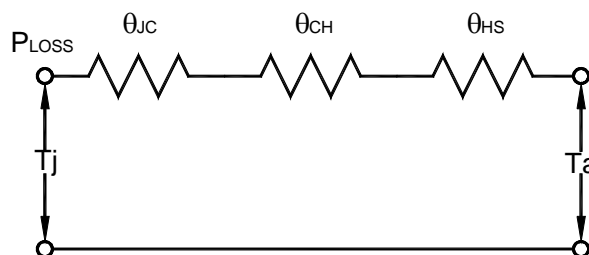
Heat radiation balance model of the TO-220 with heat sink is shown as below.



- Where
- θ_{jc} : thermal resistance between IC chip (junction point) and the package backside connecting to the heatsink.
 - θ_{js} : thermal resistance between IC chip (junction point) and the package surface.
 - θ_{ch} : thermal resistance between package backside and the heat sink including the condition of insulator, silicon grease and tighten torque.
 - θ_{hs} : thermal resistance of the heat sink



If the θ_{js} is large enough compare with other thermal resistance, the θ_{js} can be neglected and the heat radiation model can be mentioned as below.



The relation between temperature and heat radiation quantity is shown below.

$$T_j = P_{LOSS} \times (\theta_{jc} + \theta_{ch} + \theta_{hs}) + T_a \quad (^\circ\text{C})$$

REV B

(4) Thermal Design

The heat radiation balance model of the TO-220 with the heat sink is shown as follows.

Heat radiation balance

$$T_j = P_{LOSS} \times (\theta_{jc} + \theta_{ch} + \theta_{hs}) + T_a \quad (^\circ\text{C}) \quad (4-1)$$

$$P_{LOSS} = V_{in} \times I_Q + (V_{in} - V_{out}) \times I_{out} \quad (\text{W}) \quad (4-2)$$

Substituting "Eq.(4-2) into "Eq.(4-1)" obtains

$$T_j = [V_{in} \times I_Q + (V_{in} - V_{out}) \times I_{out}] \times (\theta_{jc} + \theta_{ch} + \theta_{hs}) + T_a \quad (^\circ\text{C}) \quad (4-3)$$

In Eq.(4-3)

V_{in} , I_{out} , θ_{ch} , θ_{hs} , T_a depend on using condition.

T_j , I_Q , V_{out} , θ_{jc} depend on IC specification.

When θ_{ch} , I_Q and T_j are assumed the following values,

Eq.(4-3) becomes Eq.(4-4).

$\theta_{ch} = 0.3$ to 0.4 ($^\circ\text{C}/\text{W}$) Insert the mica paper (0.1t) and thermal conduction silicon grease between the IC and heat sink and tighten them with the bolt by $4\text{Kg}\cdot\text{cm}\cdot\text{min}$.

$I_Q = 5$ to 6mA (max.)

$T_j = 125^\circ\text{C}$ (max.)

$$T_j(\text{max}) = 125 = [5 \times V_{in} + (V_{in} - V_{out}) \times I_{out}] \times (5 + 0.3 + \theta_{hs}) + T_a \quad (^\circ\text{C}) \quad (4-4)$$

When fix the V_{out} , T_j depends on the V_{in} , I_{out} , θ_{hs} and T_a .

It means;

Lower V_{in} and / or I_{out} are required to limit the temperature rise.

Smaller θ_{hs} is required for the effective heat reduce (i.e. using the large heat sink).

In the thermal design, when fix the V_{in} , I_{out} and T_a , select the heat sink which θ_{hs} is smaller than the result of Eq.(4-4).

For more detail, please refer the heat resistance value mentioned in the specification of the heat sink supplier.