

REVISION AV

ONE PLACE DECIMALS: .1 [2.54] THREE PLACE DECIMALS: .005 [.127] ANGLES 2 mm EJECTOR
 TWO PLACE DECIMALS: .01 [.254] FOUR PLACE DECIMALS: .0020 [.0508] ± 2' HEADER ASSEMBLY
 DWG NO: EHT-1XX-01-XX-D-XX-XX-X-XX-XX
 SHEET 1 OF 2

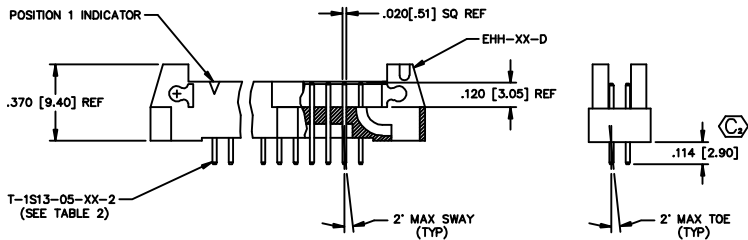
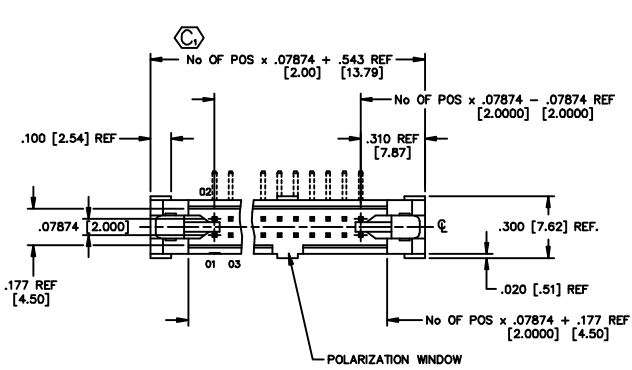
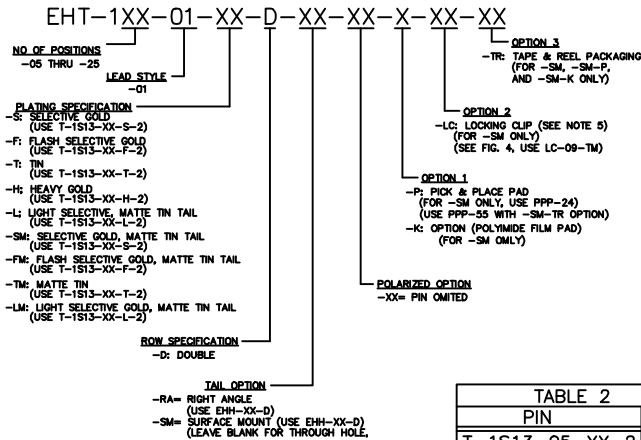
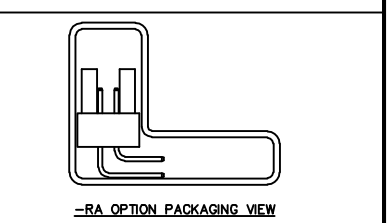
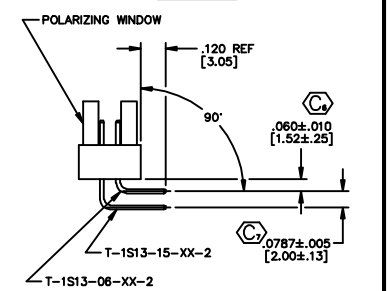
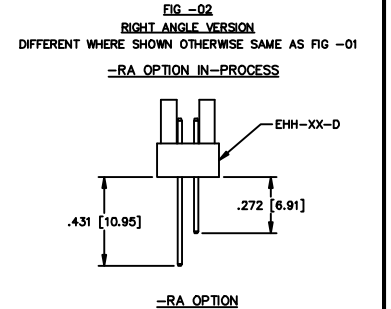


FIG -01
 THRU HOLE VERSION
 LATCH REMOVED FOR CLARITY



PIN	OAL
T-1S13-05-XX-2	.397
T-1S13-06-XX-2	.555
T-1S13-15-XX-2	.714

- NOTES:
1. MAX PIN ROTATION IN BODY: 2°
 2. PUSHOUT FORCE: 1 LB MINIMUM.
 3. DIMENSIONS [] ARE IN MILLIMETERS.
 4. Ⓢ REPRESENTS A CRITICAL DIMENSION.
 5. DUE TO THE HIGH AMOUNT OF INSERTION FORCE NEEDED, THE -LC OPTION IS NOT COMPATIBLE WITH AUTO PLACEMENT. SAMTEC RECOMMENDS MANUAL PLACEMENT FOR ALL ASSEMBLIES WITH THE -LC OPTION.



PACKAGING TUBE INSTRUCTIONS

STYLE	TUBE	PLUG
STRAIGHT	PT-1-24-16-29	TP-13
RIGHT ANGLE	ASP-90341-01-S	TP-13
SURFACE MOUNT	PT-1-24-01-44	TP-13

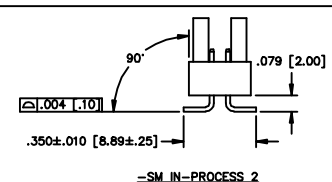
MATERIAL:
 LIQUID CRYSTAL POLYMER
 COLOR: BLACK
 TERMINAL:
 PHOSPHOR BRONZE

samtec

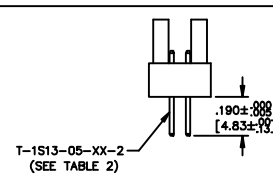
520 PARK EAST BLVD. NEW ALBANY, INDIANA 47150
 PHONE (812) 944-8733 P.O. BOX 1147
 CODE 85322

MADE BY PURVIS 2-28-94 APPROVAL
 CHECKED BY REUNER 8-18-94 GR EHT-1XX-01-XX-D-XX-XX-X-XX-XX

PROPRIETARY NOTE
 THE INFORMATION CONTAINED HEREIN IS THE PROPERTY OF SAMTEC CORPORATION AND IS UNCLASSIFIED UNLESS INDICATED OTHERWISE. IT IS TO BE KEPT CONFIDENTIAL AND NOT TO BE DISCLOSED TO ANY OTHER PARTY WITHOUT THE WRITTEN PERMISSION OF SAMTEC CORPORATION.



-SM IN-PROCESS 2



-SM IN-PROCESS 1

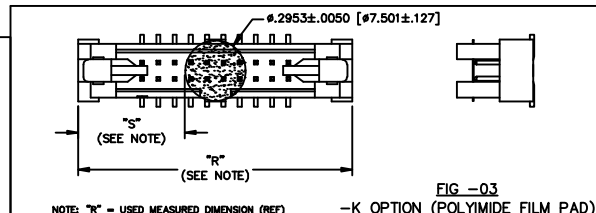


FIG -03
 -K OPTION (POLYIMIDE FILM PAD)

NOTE: "R" = USED MEASURED DIMENSION (REF)
 "S" = (R - .2953 [7.50]) / 2 ± .020 [.51]