

High Density

**SPECIFICATIONS:**

**MATERIALS AND PLATINGS**

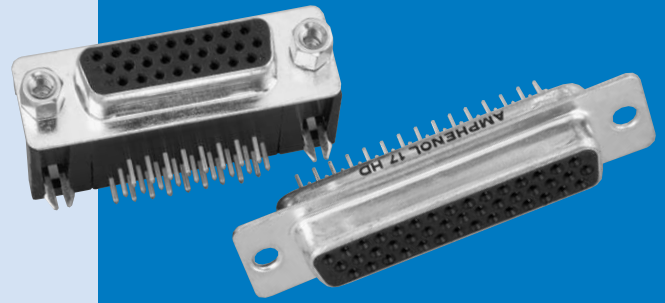
<b>Shells</b>	Steel, tin plated, grounding indents on plug.
<b>Contact Material</b>	Copper alloy
<b>Contact Plating</b>	Engagement area: gold (see ordering information).
<b>Termination End</b>	150µ" (3.81µm) tin/lead
<b>Nickel Underplate</b>	50µ" (1.27µm) entire contact

**ELECTRICAL DATA**

<b>Current Rating</b>	3 Amps maximum per contact
<b>Voltage Rating</b>	125 VAC
<b>Dielectric Withstanding Voltage</b>	1000 VAC (minimum)
<b>Dielectric</b>	Glass filled thermoplastic, black, UL 94 VO
<b>Insulation Resistance</b>	5,000 Megaohms (minimum)
<b>Contact Resistance</b>	15 Milliohms (maximum)

**CLIMATIC DATA**

<b>Operating Temperature</b>	-67°F (-55°C) to 221°F (105°C)
------------------------------	--------------------------------



17 BH/HD SERIES

Amphenol's High Density D-Subminiature connectors complement Amphenol's extensive D-Subminiature connector line. This line of connectors offers many superior features, high performance level and low installation cost.

The connector configurations are available in 15, 26, 44, 62 and 78 positions.

The product offering includes PCB mount connectors in both straight or right angle termination styles. Straight PCB mount are available in both Fixed Screw Machine and Stamped and Formed contacts, while Right Angle PCB mount are only available with Stamped and Formed contacts.

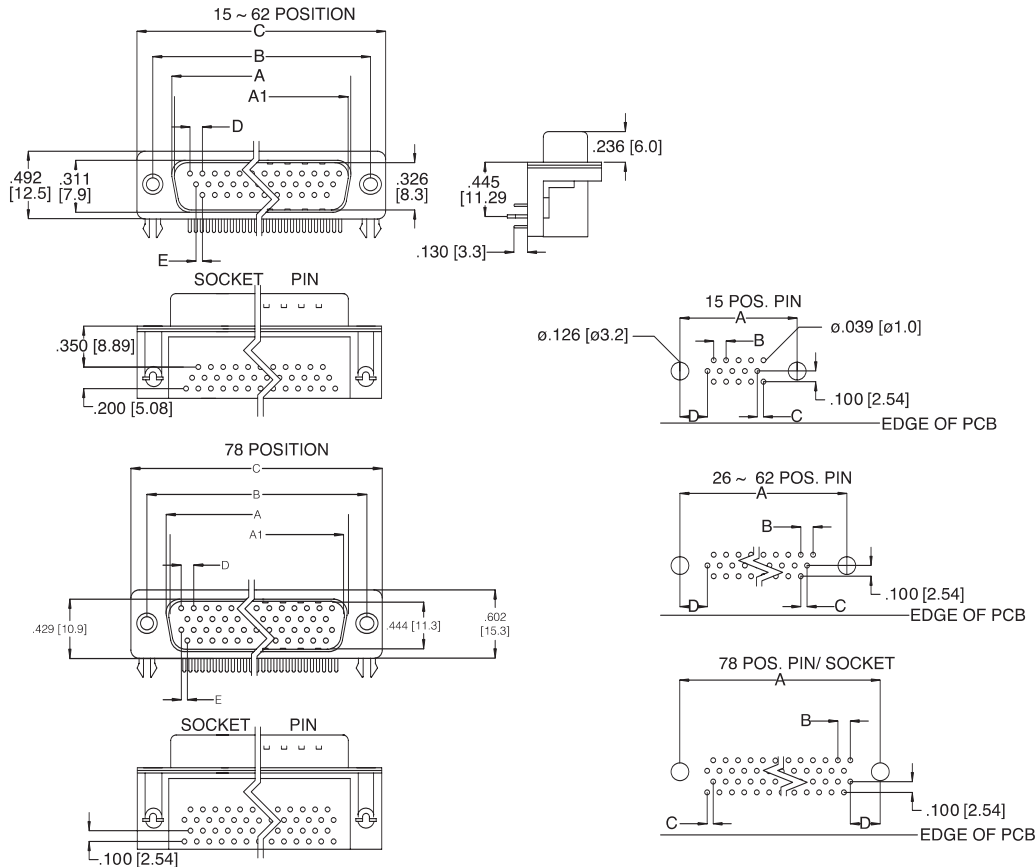
A cable mount version with solder terminations is also available, which can be combined with Amphenol's standard line of shielded or unshielded backshells.

- Industrial
- Telecom
- Any industry standard I / O connections

INCHES (MM)



DIMENSIONS FOR 15 - 62 POSITION (3 ROW)(SHOWN WITH FIXED FEMALE SCREWLOCKS) DIMENSIONS FOR THE 78 POSITION (4 ROW)



CONTACTS	A SOCKET	A1 PIN	B	C	D	E
15	.642 [16.30]	.666 [16.92]	.984 [25.0]	1.213 [30.8]	.090 [2.29]	.045 [1.145]
26	.969 [24.6]	.994 [25.25]	1.311 [33.3]	1.543 [39.2]	.090 [2.29]	.045 [1.145]
44	1.508 [38.3]	1.534 [38.96]	1.854 [47.1]	2.091 [53.1]	.090 [2.29]	.045 [1.145]
62	2.157 [54.8]	2.182 [55.42]	2.50 [63.5]	2.732 [69.4]	.095 [2.41]	.047 [1.205]
78	2.05 [52.20]	2.079 [52.81]	2.40 [61.0]	2.638 [67.0]	.095 [2.41]	.047 [1.205]

CONTACTS	A	B	C	D
15	.984 [25.0]	.090 [2.29]	.045 [1.145]	.277 [7.04]
26	1.311 [33.3]	.090 [2.29]	.045 [1.145]	.271 [6.88]
44	1.854 [47.1]	.090 [2.29]	.045 [1.145]	.271 [6.88]
62	2.50 [63.5]	.095 [2.41]	.047 [1.205]	.275 [7.00]
78	2.402 [61.0]	.095 [2.41]	.047 [1.205]	.300 [7.63]

**ORDERING INFORMATION**

**17BH Series High Density D-Sub**

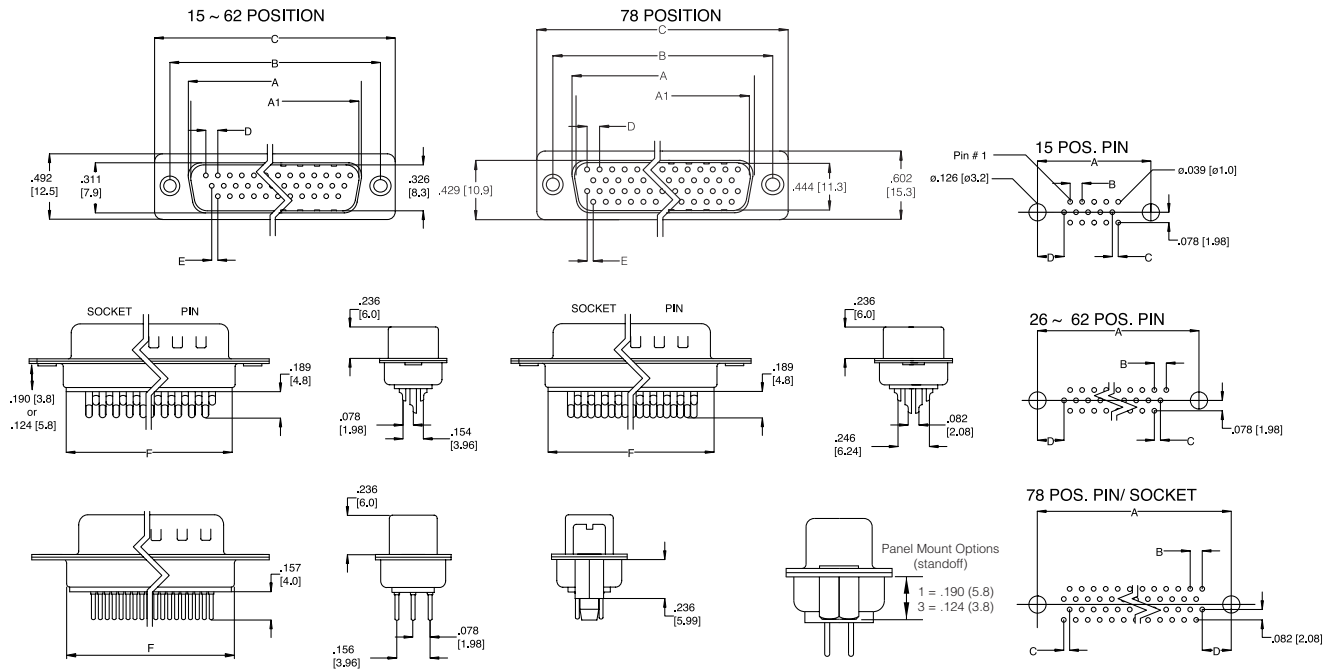
Front Metal Shell, Right-Angle PC Mount

**17BH - 0XX - X - XX - X - XX**

Series \_\_\_\_\_  
 Number Of Positions \_\_\_\_\_  
 15, 26, 44, 62, 78  
 Type \_\_\_\_\_  
 P Pin (male)  
 S Socket (female)

**PCB Mount Options**  
 00 Clear hole  
 10 Arrowhead Board  
**Panel Mounting Options**  
 0 .120 (3.05) Clear Hole  
 1 #4-40 Threaded Hole  
 2 #4-40 Fixed Female Screw  
**Plating Code**  
 AA Gold Flash over Nickel  
 AM 30µ\* (.76µm) Gold over Nickel

**DIMENSIONS**



CONTACTS	A SOCKET	A1 PIN	B	C	D	E	F
15	.642 [16.30]	.666 [16.92]	.984 [25.0]	1.213 [30.8]	.090 [2.29]	.045 [1.145]	.756 [19.2]
26	.969 [24.6]	.994 [25.25]	1.311 [33.3]	1.543 [39.2]	.090 [2.29]	.045 [1.145]	1.071 [27.2]
44	1.508 [38.3]	1.534 [38.96]	1.854 [47.1]	2.091 [53.1]	.090 [2.29]	.045 [1.145]	1.618 [41.1]
62	2.157 [54.8]	2.182 [55.42]	2.50 [63.5]	2.732 [69.4]	.095 [2.41]	.047 [1.205]	2.256 [57.3]
78	2.05 [52.20]	2.079 [52.81]	2.40 [61.0]	2.638 [67.0]	.095 [2.41]	.047 [1.205]	2.169 [55.1]

CONTACTS	A	B	C	D
15	.984 [25.0]	.090 [2.29]	.045 [1.145]	.277 [7.04]
26	1.311 [33.3]	.090 [2.29]	.045 [1.145]	.277 [7.04]
44	1.854 [47.1]	.090 [2.29]	.045 [1.145]	.277 [7.04]
62	2.50 [63.5]	.095 [2.41]	.047 [0.120]	0.699
78	2.402 [61.0]	.095 [2.41]	.047 [0.120]	0.699

**ORDERING INFORMATION**

**17 HD Series High Density D-Sub**

*Solder Cup & Straight P.C. Mount, Front Metal Shell Fixed Contact*

**17HD - 0XX - X - XX - X - XX**

Series \_\_\_\_\_  
 Number Of Positions \_\_\_\_\_  
 15, 26, 44, 62, 78  
 Type \_\_\_\_\_  
 P Pin (male)  
 S Socket (female)

**Termination Types:**  
 00 Solder Cup  
 30 Board-mount, Vertical  
 32 Board-mount, Vertical with Boardlocks  
 33 Board-mount, Vertical with standoff, no boardlock

**Panel Mounting Options:**  
 0 .120 (3.05) Clear Hole  
 1 #4-40 Threaded Hole .190 (5.8)  
 2 #4-40 Fixed Female Screwlock  
 3 #4-40 Threaded Hole .124 (3.8)

**Plating Code:**  
 AA Gold Flash over Nickel  
 AM 30µ" (.76µm) Gold over Nickel

INCHES (MM)