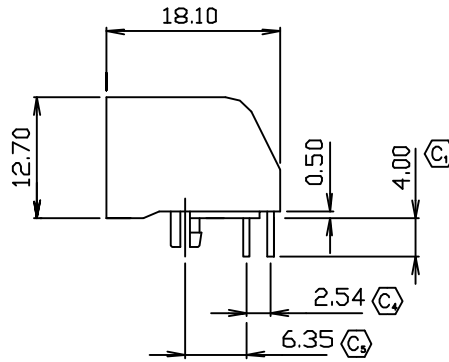
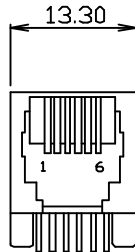


REVISION E



MODS-D-6PXC-X-N-TH

TYPE  
-D

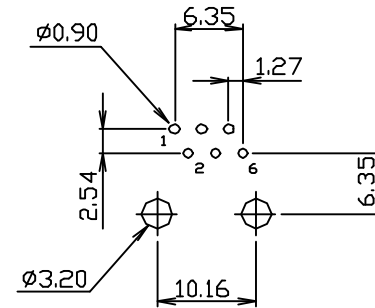
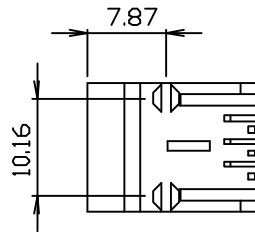
POSITIONS/CONTACTS  
-6P4C: 6 Pos/4 Con  
-6P6C: 6 Pos/6 Con

PLATING  
-L: .000015" Au  
-S: .000030" Au  
-U: .000050" Au  
(SEE NOTE 2)

OPTION  
-N: No Flange

RA TERMINATION  
-TH: Through Hole

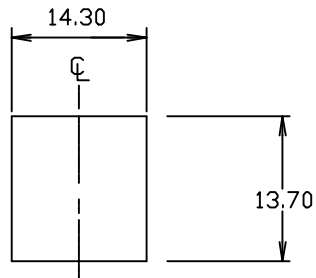
DO NOT SCALE  
FROM THIS PRINT



PCB LAYOUT

NOTES:

1. REPRESENTS A CRITICAL DIMENSION
2. PLATING APPLIES TO MATING AREA, GOLD FLASH ON TAILS



SUGGESTED PANEL CUTOUT DIMENSIONS

<p>UNLESS OTHERWISE SPECIFIED, DIMENSIONS ARE IN MM. TOLERANCES ARE:</p> <p>DECIMALS      ANGLES</p> <p>X.XX±0.25      ±3</p> <p>X.XXX±0.13</p> <p>X.XXXX±0.05</p>	<p><b>PROPRIETARY NOTE</b></p> <p>THIS DOCUMENT CONTAINS INFORMATION CONFIDENTIAL AND PROPRIETARY TO SAMTEC INC. AND SHALL NOT BE REPRODUCED OR TRANSFERRED TO OTHER DOCUMENTS OR DISCLOSED TO OTHERS OR USED FOR ANY PURPOSE OTHER THAN THAT FOR WHICH IT WAS OBTAINED WITHOUT THE EXPRESSED WRITTEN CONSENT OF SAMTEC INC.</p>	<p><b>samtec</b></p> <p>520 PARK EAST BLVD. NEW ALBANY, IN 47150 (812) 944-6733 P.O. BOX 1147 TWX: 810-540-4085</p>
<p>DO NOT SCALE DRAWING</p> <p>INSULATOR: PBT 20% Glass Filled (UL 94V-0) Black</p> <p>CONTACT: Phosphor Bronze</p> <p>SHELL: Copper Alloy</p> <p>MAX FLASH ALLOWED: .002</p> <p>MAX GATE VESTIGE: .002</p> <p>F:\DWG\misc\mktg</p>	<p>SHEET SCALE: 1:2</p>	<p>DESCRIPTION: RJ11 or RJ12 Very Low Profile PCB Jack</p> <p>DWG. NO. MODS-D-6PXC-X-N-TH</p> <p>BY: J. Riley 2/23/2004 SHEET 1 OF 1</p>

CODE: 56322