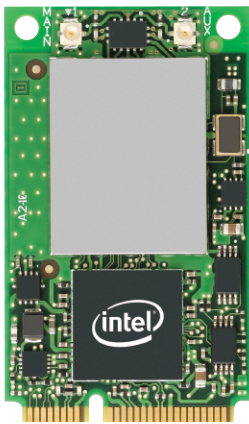


# Intel® PRO/Wireless 3945ABG Network Connection

## Product Description:

The Intel® PRO/Wireless 3945ABG Network Connection is an embedded 802.11 a/b/g PCIe Mini Card network adapter operating in the 2.4GHz and 5GHz spectrum. The new solution has support for the latest wireless industry standards, and offers a host of features that will enhance today's mobile lifestyle.



## Key Features:

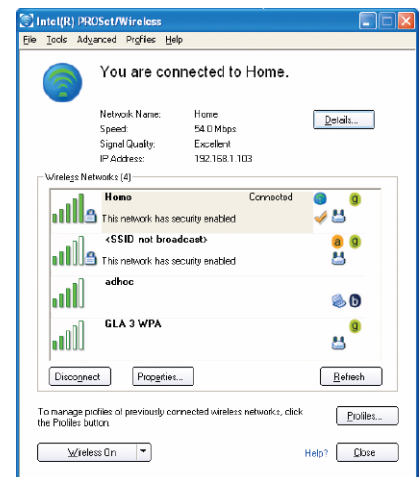
- 802.11 e QoS with enhancements for VoIP
- Noise Interference Filter enhances performance, especially in areas with wireless signal overlap
- Wake on WLAN Support allows waking up a notebook remotely and distributing upgrades and patches
- Business Class Wireless Suite offering Enhanced VoIP Quality Technology and Optimal AP Selection Technology
- Intel® PROSet/Wireless Software v10.1 with a new IT Administrator Toolkit and GUI enhancements that simplify connecting to WLAN networks
- Advanced roaming and AP selection algorithms based on link quality parameters
- IEEE 802.11 a/b/g standard tri-mode Wi-Fi CERTIFIED® Wireless LAN support (2.4GHz and 5GHz)\*
- Up to 54 Mbps data rates  
Note: 802.11 b up to 11Mbps and 802.11 a/g up to 54 Mbps data rates
- Industry-standard wireless LAN security support is provided (802.11 i, 802.1X, WEP, WPA, WPA2, AES)†
- Cisco® Compatible Extensions v4 support available on certain models. Check with your PC manufacturer for details‡
- Support for antenna diversity enables optimized WLAN performance for multi-antenna systems
- Intel® Wireless Coexistence System capability enables Bluetooth® co-existence

## Intel® PROSet/Wireless Software v10.1<sup>o</sup>

Intel® PROSet/Wireless Software v10.1 is available for users of Intel® PRO/Wireless hardware. The latest version of the software helps enable a superior mobile experience by providing enhancements for end users as well as IT administrators who deploy and manage wireless networks.

- Simplified User Interface
- Added Administrator Tool capabilities
  - Centralized control over driver and application settings
  - Central profile management including Single Sign On
  - Ability to distribute software updates, profiles and settings
- Support for Business Class Wireless Suite<sup>o</sup>:
  - Optimal AP Selection Technology
  - Enhanced VoIP Quality Technology
- New VoIP API that takes advantage of 802.11 e QoS, support for wideband codecs
- Additional profile management capabilities
- Supports the following hardware<sup>\*\*</sup>:
  - Intel® PRO/Wireless 3945ABG Network Connection
  - Intel® PRO/Wireless 2915ABG Network Connection
  - Intel® PRO/Wireless 2200BG Network Connection

\*\*Note: Some features may only be supported on the latest hardware



## Technical Specifications

Model Name	Intel® PRO/Wireless 3945ABG Network Connection
Dimensions (H x W x D)	2.00 in x 1.18 in x 0.18 in (50.95mm x 30mm x 4.5mm)
Weight	6g
Antenna Interface Connector	Hirose* U.FL-R-SMT mates with cable connector U.FL-LP-066
Dual Diversity Antenna	On-board dual diversity switching support for systems designed with two antennas
Radio ON/OFF control <sup>6</sup>	Supported by both hardware and software
Connector Interface	Mini Card form factor, based on PCIe electrical interface
LEDs output	Link, Activity
Operating Temperature	0 to +80° Celsius
Humidity Non-Operating	50% to 92% RH non-condensing (at temperatures of 25°C to 80°C)
Operating System	Microsoft* Windows* XP (Professional, Home, Tablet), 2000
Wi-Fi Alliance	Wi-Fi CERTIFIED* for 2.4GHz and 5GHZ band, WMM, WPA and WPA2
Microsoft WHQL	YES
WLAN Standard	IEEE 802.11a, IEEE 802.11g and IEEE 802.11b
Architecture	Infrastructure or ad hoc (peer-to-peer)
Roaming <sup>1</sup>	802.11a, 802.11g and 802.11b compliant for seamless roaming between respective access points (802.11b, 802.11g, 802.11a/b/g)
<b>Security<sup>5</sup></b>	
AUTHENTICATION	WPA <sup>5</sup> and WPA2 <sup>5</sup> , 802.1X (EAP-TLS, TTLS, MD5, PEAP, LEAP, EAP-FAST), EAP-SIM
Authentication Protocols	PAP, CHAP, MD5, GTC, MS-CHAP, MS-CHAPv2
ENCRYPTION	64-bit and 128-bit WEP, AES-CCMP, CKIP, TKIP
Product Safety	UL, C-UL, CB (IEC 60590)

## Products Available

## Model Name

Intel® PRO/Wireless 3945ABG Network Connection

WM3945AG

<sup>1</sup> Other names and brands may be claimed as the property of others.

<sup>2</sup> Wireless connectivity and some features may require the purchase of additional software, services, or external hardware. Availability of public wireless LAN access points is limited, wireless functionality may vary by country and some hotspots may not support Linux-based Intel Centrino mobile technology systems. System performance measured by MobileMark\* 2005. System performance, battery life, wireless performance, and functionality will vary depending on the specific operating system, hardware, and software configurations. See [http://www.intel.com/products/centrino/more\\_info](http://www.intel.com/products/centrino/more_info) for more information.

<sup>5</sup> Some security solutions, Intel® PROSet/Wireless Software and/or Business Class Wireless Suite features may not be supported by your PC's operating system and/or by your PC manufacturer. Check with your PC manufacturer for details on availability.

<sup>6</sup> AES requires PC software upgrade that will be available in 2H'04 and requires access point support. Available on 802.11 b/g only. Check with your PC manufacturer for availability.

<sup>6</sup> Intel® PROSet/Wireless software may not be supported by your PC manufacturer. Check with your PC manufacturer for details on availability.

<sup>1</sup> Roaming is supported only between each respective band and mode of access points.

No license, express or implied, by estoppel or otherwise, to any intellectual property rights is granted by this document. Except as provided in Intel's Terms and Conditions of Sale for such products, Intel assumes no liability whatsoever, and Intel disclaims any express or implied warranty, relating to sale and/or use of Intel products including without limitation, liability or warranties relating to fitness for a particular purpose, merchantability, or infringement of any patent, copyright or other intellectual property right. Intel products are not intended for use in medical, life saving, or life sustaining applications. Intel may make changes to specifications and product descriptions at any time, without notice. For the most current product information, please visit: <http://www.intel.com/network>.

Intel, the Intel logo and the Intel. Leap ahead. logo, are trademarks or registered trademarks of Intel Corporation or its subsidiaries in the United States and other countries.

Copyright ©2006 Intel Corporation. All rights reserved. Printed in USA.

10106/JAN/WIR/PDF

310796-001US

