



50PzS350(2V350Ah)



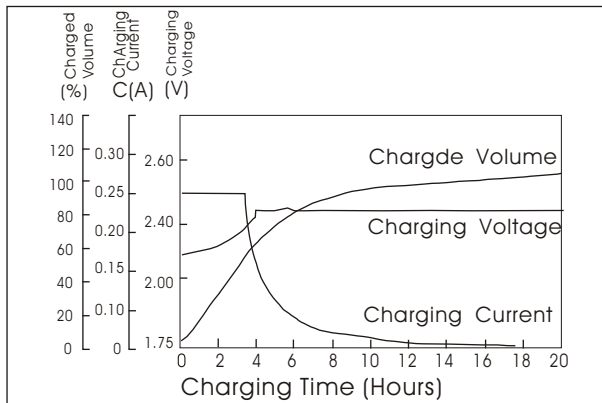
Specifications

Nominal Voltage		2 V
Rated capacity (10 hour rate)		350Ah
Dimensions	Total Height	547 mm (21.5 inches)
	Height	471mm (18.5inches)
	Length	124mm(4.9inches)
	Width	206 mm (8.11inches)
Weight Approx (dry weight)		21.5Kg (47.3lbs)

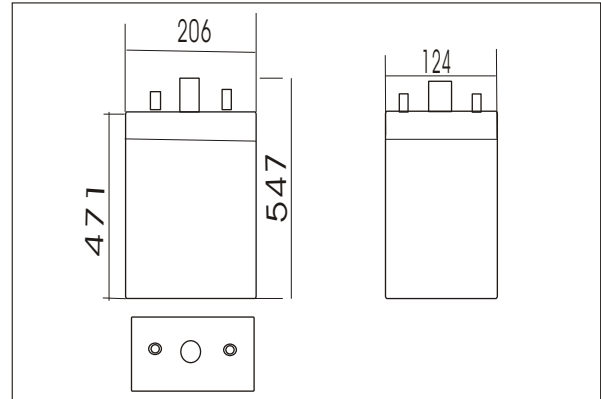
Characteristics

Capacity 25°C(77°F)	10 hour rate(35A)	350Ah
	1 hour rate(157.5A)	157.5Ah
	0.5 hour rate(245A)	122.5Ah
Capacity affected by Temperature (10hour rate)	40°C(104°F)	102%
	25°C(77°F)	100%
	0°C(32°F)	85%
	-15°C(5°F)	65%
Self-Discharge at 25°C(77°F)	Capacity after 3 month storage	91%
	Capacity after 6 month storage	82%
	Capacity after 12 month storage	64%
Terminal quantity	2	
Charge (constant Voltage)	Initial Charging Current less than 87.5A Voltage 2.33-2.38V	

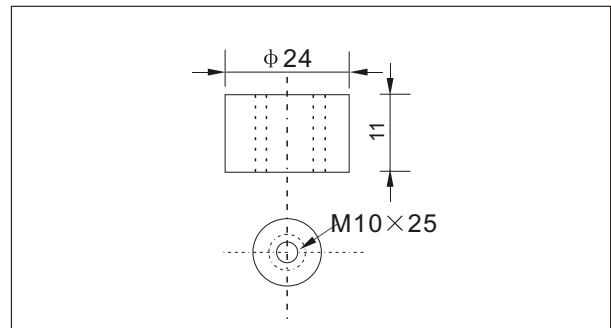
Charging characteristics(25°C)



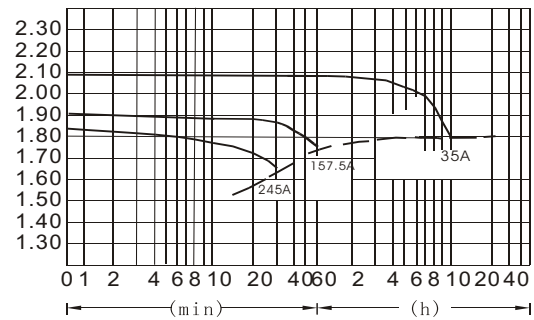
Outer dimensions (mm)



Terminal Type (mm)



Discharge Curves 25°C(77°F)



Cycling Curves

