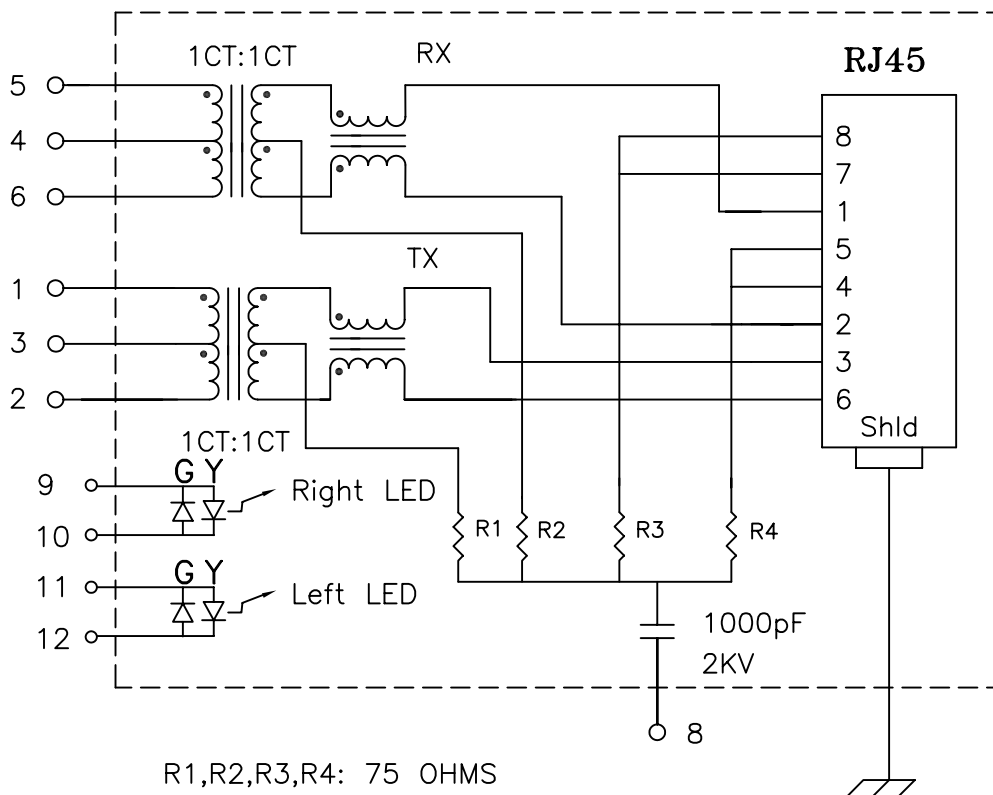


## Schematic:

(One of Four)



## Electrical Specifications: @25°C

Isolation Voltage: 1500 Vrms (Input to Output)

Isolation Voltage: 500 Vrms (P1+2+3 to P4+5+6)

Turns Ratio: TX 1CT:1CT  $\pm 3\%$  RX 1CT:1CT  $\pm 3\%$

CABLE SIDE OCL: 350uH Minimum @100KHz 100mV 8mADC

Cw/w: 27pF Typical @100KHz 100mV

Insertion Loss (300KHz-100MHz): -1.0dB Minimum

Return Loss: @30MHz -18dB Minimum

@80MHz -12dB Minimum

Differential to Common Mode Rejection:

-45dB Min @1-60MHz

-35dB Min @60-200MHz

### Notes:

1. Solderability: Leads shall meet MIL-STD-202, Method 208D for solderability.
2. Flammability: UL94V-0
3. ASTM oxygen index: > 28%
4. Insulation System: Class F 155°C. UL file E151556
5. Operating Temperature Range: All listed parameters are to be within tolerance from -40°C to +85°C
6. Storage Temperature Range: -55°C to +125°C
7. Aqueous wash compatible

DOC REV: A/3

<b>XFMRs Inc.</b>		Title: <b>FOUR PORT COMBO</b>		
		UNLESS OTHERWISE SPECIFIED		P/N: XFATM9K-CLNN4-4MS
TOLERANCES:		DWN.	罗振江	Mar-26-04
.xxx $\pm 0.010$		CHK.	廖玉坤	Mar-26-04
Dimensions in Inch		APP.	MS	Mar-26-04
SHEET 1 OF 2				

**PROPRIETARY:**

Document is the property of XFMRs Group & is not allowed to be duplicated without authorization.

# Mechanical Dimensions: (FOR CLxu4-4MS)

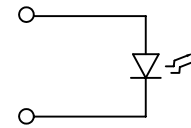
Complete the Combo P/N as follows:

Replace 'x' & 'u' in the part number with one of the LED color letters:

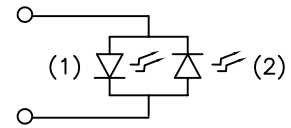
- Y=Yellow
- G=Green
- A=Amber
- R=Red
- C=Green(1)/Amber(2) Bicolor
- D=Amber(1)/Green(2) Bicolor
- M=Green(1)/Yellow(2) Bicolor
- N=Yellow(1)/Green(2) Bicolor
- P=Red(1)/Green(2) Bicolor
- Q=Green(1)/Red(2) Bicolor

'x' = Left LED Color  
'u' = Right LED Color

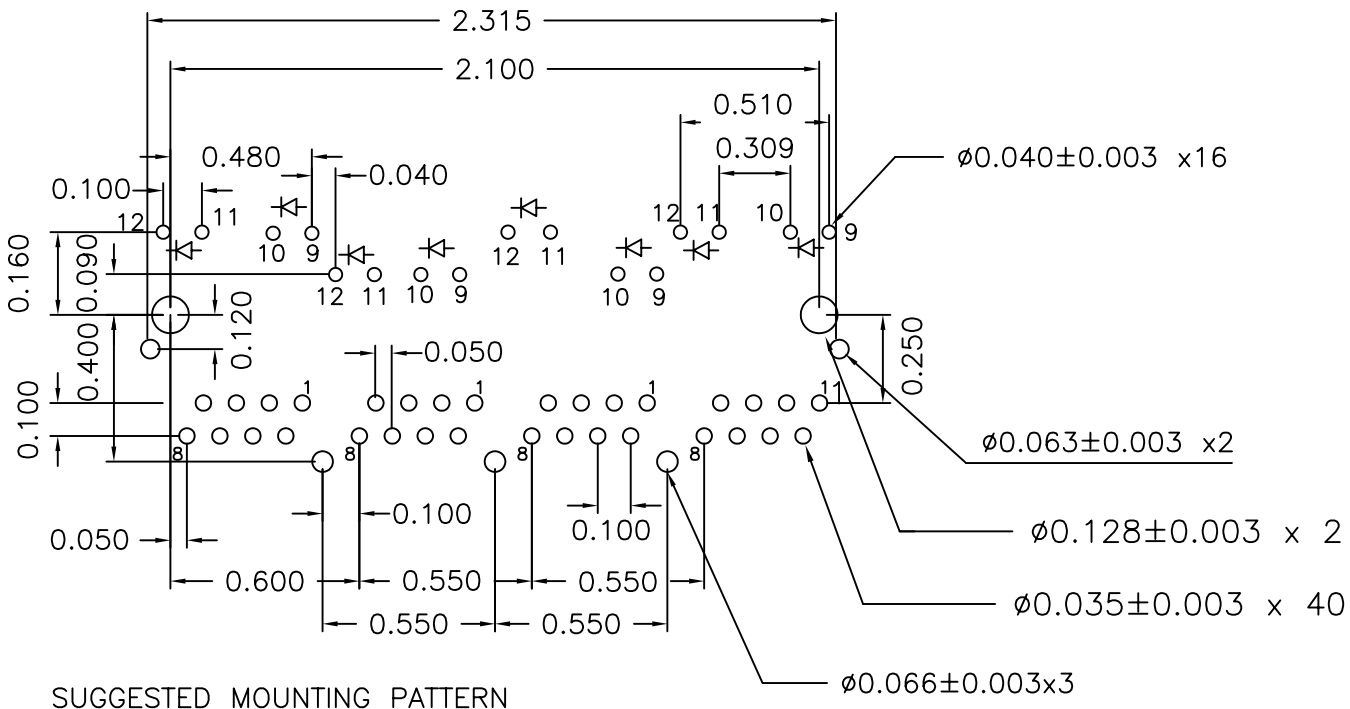
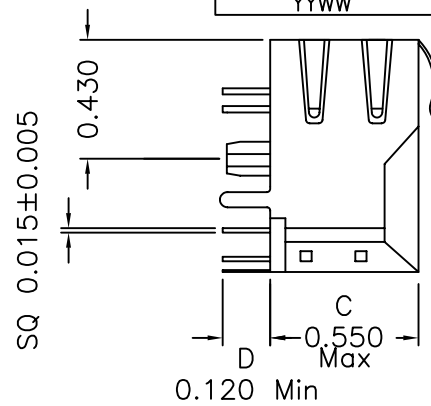
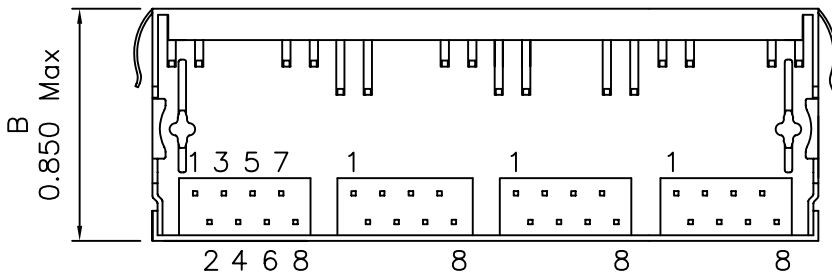
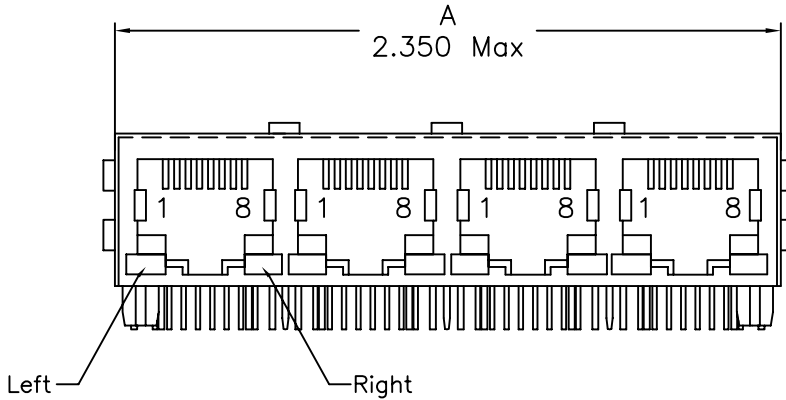
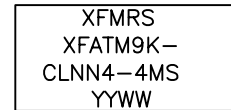
Single Color LED:



Bi-Color LED:



Marking on top:



SUGGESTED MOUNTING PATTERN

DOC REV: A/3

**XFMRs Inc.**

Title: **FOUR PORT COMBO w/ LED's**

UNLESS OTHERWISE SPECIFIED  
TOLERANCES:  
.xxx ±0.010  
Dimensions in Inch

P/N: XFATM9K-CLNN4-4MS

REV. A

DWN.

罗振江

Mar-26-04

CHK.

廖玉坤

Mar-26-04

APP.

MS

Mar-26-04

**PROPRIETARY:**

Document is the property of XFMRs Group & is not allowed to be duplicated without authorization.

SHEET 2 OF 2