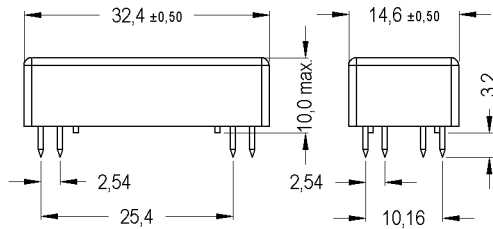
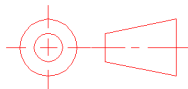


**DIMENSIONS (mm)**

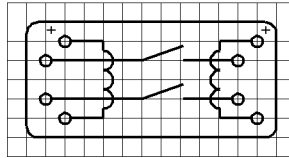


Pins:  $\square$  0.65 mm  
 L = 3.2±0.3 mm  
 Material: Cu-alloy tinned

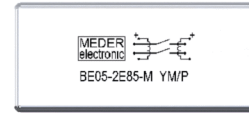


dimensions (mm)  
 tolerances according to DIN ISO 2768 m

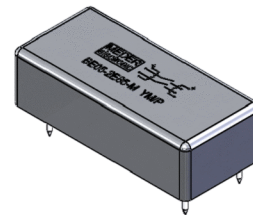
**LAYOUT**  
 pitch 2.54 mm/Top view



**MARKING**



MEDER-Label  
 Type  
 Production code,  
 EN60062/Factory code



Coil polarity must be observed.  
 In the operating of latching relays the contact is closed by the application of a positive pulse ( $\geq 2\text{ms}$ ) to one of the two coils via the connector marked "+". This condition is maintained until one of the "+" connectors receives a negative pulse ( $\geq 2\text{ms}$ ).

Coil Data at 20 °C	Conditions	Min	Typ	Max	Unit
Coil resistance S1		585	650	715	Ohm
Coil resistance S2		585	650	715	Ohm
Coil voltage			5		VDC
Rated power			38		mW
Pull-In voltage				3,5	VDC
Drop-Out voltage		0,8			VDC

Contact Data 85	Conditions	Min	Typ	Max	Unit
Contact rating	Any DC combination of V & A not to exceed their individual max.'s			100	W
Switching voltage	DC or Peak AC			1.000	V
Switching current	DC or Peak AC			1	A
Carry current	DC or Peak AC 100% Duty Cycle			2,5	A
Contact resistance static	Measured with 40% overdrive			150	mOhm
Insulation resistance	RH <45 %, 100 V test voltage	10			GOhm
Breakdown voltage (40-50 AT)	according to IEC 255-5	3.000			VDC
Operate time incl. bounce	measured with 40% overdrive			1,1	ms
Release time	measured with no coil excitation			0,1	ms
Capacitance	@ 10 kHz across open switch		0,5		pF

Special Product Data	Conditions	Min	Typ	Max	Unit
Number of contacts				2	
Contact - form				E - bistable NO	
Dielectric Strength Coil/Contact	according to IEC 255-5	2			kV AC
Insulation resistance Coil/Contact	RH <45%, 200 VDC test voltage	1			TOhm
Case color				silver metallic	
Housing material				Metal	
Sealing compound				Polyurethan	
Connection pins				Copper alloy tin plated	
Reach / RoHS conformity				yes	

Environmental data	Conditions	Min	Typ	Max	Unit
Shock	1/2 sine wave duration 11ms			50	g



*Products for tomorrow...*

Europe: +49 / 7731 8399 0 | Email: info@meder.com  
USA: +1 / 508 295 0771 | Email: salesusa@meder.com  
Asia: +852 / 2955 1682 | Email: salesasia@meder.com

Item No.:  
**8805285700**  
Item:  
**BE05-2E85-M**

Environmental data	Conditions	Min	Typ	Max	Unit
Vibration	from 10 - 2000 Hz			20	g
Operating temperature		-20		70	°C
Storage temperature		-40		105	°C
Soldering temperature	wave soldering max. 5 sec.			260	°C
Washability		fully sealed			

General data	Conditions	Min	Typ	Max	Unit
Total weight			14		g
Packaging		Tube 32 pcs. each			

Modifications in the sense of technical progress are reserved

Designed at: 26.01.10    Designed by: MPOTUZAK  
Last Change at:            Last Change by:

Approval at: 27.01.10    Approval by: KOLBRICH  
Approval at:              Approval by:

Version: 01