



**SOT-23-3L Encapsulate Three Terminal Voltage Regulator**

**CJ79L06** Three-terminal negative voltage regulator

**FEATURES**

Maximum Output current

$I_{OM}: 0.1\text{ A}$

Output voltage

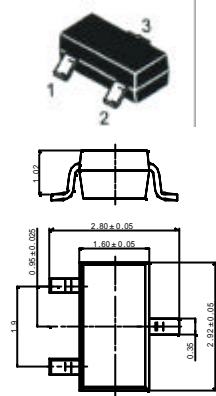
$V_o: -6\text{ V}$

SOT - 23 - 3L

1. GND

2. OUT

3. IN



**ABSOLUTE MAXIMUM RATINGS ( Operating temperature range applies unless otherwise specified )**

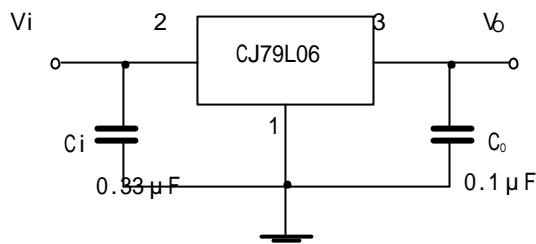
| Parameter                            | Symbol    | Value    | Unlts |
|--------------------------------------|-----------|----------|-------|
| Input Voltage                        | $V_i$     | -30      | V     |
| Operating Junction Temperature Range | $T_{OPR}$ | 0—+125   |       |
| Storage Temperature Range            | $T_{STG}$ | -55—+150 |       |

**ELECTRICAL CHARACTERISTICS**

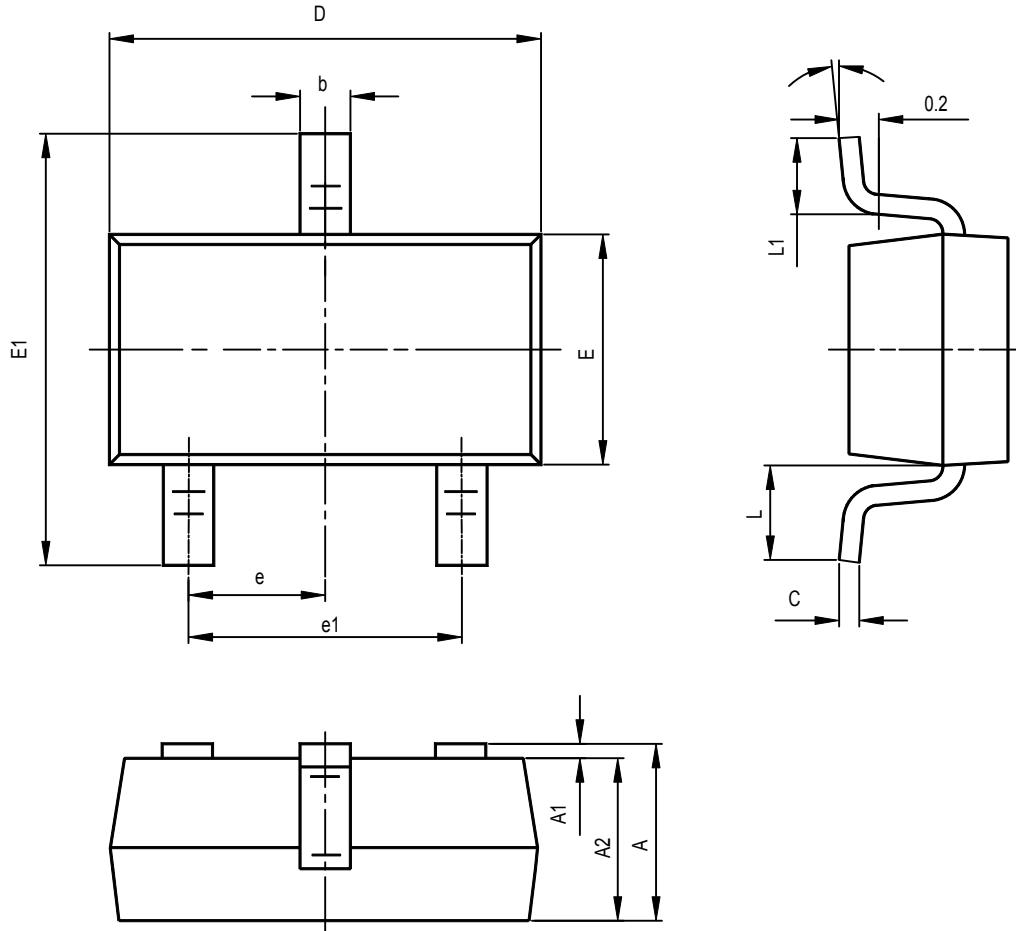
( $V_i=-12\text{V}, I_o=40\text{mA}, 0 < T_j < 125$  ,  $C_1=0.33\ \mu\text{F}, C_o=0.1\ \mu\text{F}$  , unless otherwise specified )

| Parameter            | Symbol       | Test conditions                                                                             | MIN   | TYP  | MAX   | UNIT          |
|----------------------|--------------|---------------------------------------------------------------------------------------------|-------|------|-------|---------------|
| Output voltage       | $V_o$        | $V_{IN}=-12\text{V}, I_o=40\text{mA}$                                                       | -5.75 | -6.0 | -6.25 | V             |
| Line Regulation      | $V_o-V_{IN}$ | $V_{IN}=-8\sim-20\text{V}, I_o=40\text{mA}$                                                 |       | 20   | 175   | mV            |
| Load Regulation      | $V_o-I_o$    | $V_{IN}=-12\text{V}, I_o=1\sim100\text{mA}$                                                 |       | 21   | 80    | mV            |
| Quiescent Current    | $I_Q$        | $V_{IN}=-12\text{V}, I_o=40\text{mA}$                                                       |       |      | 6.0   | mA            |
| Ripple Rejection     | RR           | $V_{IN}=-9\text{V}\sim-19\text{V}, I_o=40\text{mA}, e_{IN}=1\text{V}_{P-P}, f=120\text{Hz}$ | 41    | 48   |       | dB            |
| Output Noise Voltage | $V_{NO}$     | $V_{IN}=-12\text{V}, f=10\text{Hz}\sim100\text{KH}, I_o=40\text{mA}$                        |       | 44   |       | $\mu\text{V}$ |

**TYPICAL APPLICATION**



# SOT-23-3L PACKAGE OUTLINE DIMENSIONS



| Symbol | Dimensions In Millimeters |       | Dimensions In Inches |       |
|--------|---------------------------|-------|----------------------|-------|
|        | Min                       | Max   | Min                  | Max   |
| A      | 1.050                     | 1.250 | 0.041                | 0.049 |
| A1     | 0.000                     | 0.100 | 0.000                | 0.004 |
| A2     | 1.050                     | 1.150 | 0.041                | 0.045 |
| b      | 0.300                     | 0.400 | 0.012                | 0.016 |
| c      | 0.100                     | 0.200 | 0.004                | 0.008 |
| D      | 2.820                     | 3.020 | 0.111                | 0.119 |
| E      | 1.500                     | 1.700 | 0.059                | 0.067 |
| E1     | 2.650                     | 2.950 | 0.104                | 0.116 |
| e      | 0.950TPY                  |       | 0.037TPY             |       |
| e1     | 1.800                     | 2.000 | 0.071                | 0.079 |
| L      | 0.700REF                  |       | 0.028REF             |       |
| L1     | 0.300                     | 0.600 | 0.012                | 0.024 |
| θ      | 0°                        | 8°    | 0°                   | 8°    |