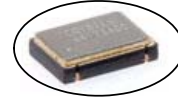


**C32xx Model**  
**5X7 mm SMD, 5V, HCMOS/TTL**

# Clock Oscillator

**Frequency Range:** 1.544MHz to 106.250MHz  
**Frequency Stability:** ±10ppm to ±100ppm  
**Temperature Range:**  
 Operating: 0°C to 70°C  
 (Option M) -20°C to 70°C  
 (Option E) -40°C to 85°C  
**Storage:** -55°C to 120°C  
**Input Voltage:** 5V ± 0.5V  
**Input Current:** 60mA Max  
**Output:** HCMOS/TTL  
 Symmetry: 40/60% Max @ 50% Vdd  
 (Option) 45/55% Max  
 Rise/Fall Time: 6ns Max @ 20% to 80% Vdd  
  
 Logic: "0" = 10% Vdd Max  
 "1" = 90% Vdd Min  
 Load: 50pF/10TTL Max  
**Jitter RMS:** 12KHz~20MHz 0.5ps Typ, 1ps Max

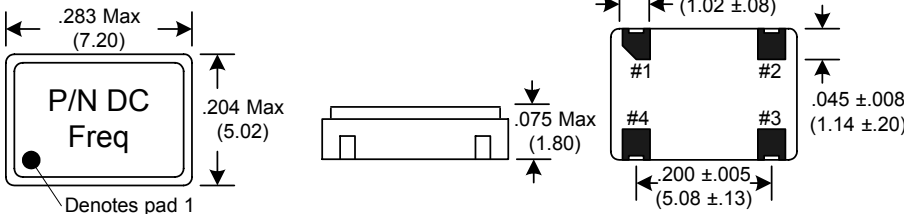


Designed to meet today's requirements for low jitter 5V applications. The C32xx Series utilizes fundamental and 3rd overtone crystal designs for excellent jitter performance. Available on 16mm tape and reel in quantities of 1K.

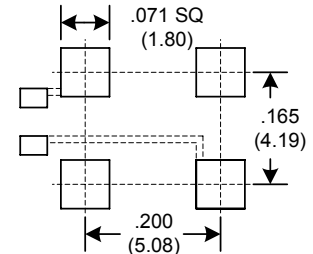
**Aging:** <3ppm 1st/yr, 1ppm every year thereafter

Dimensions inches (mm)

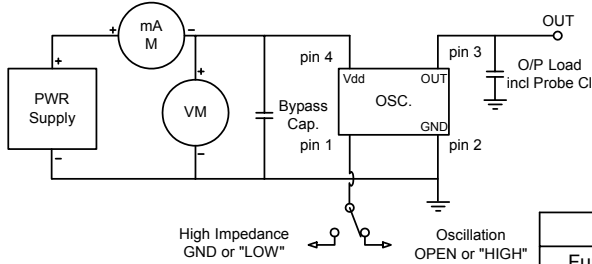
All dimensions are Max unless otherwise specified.



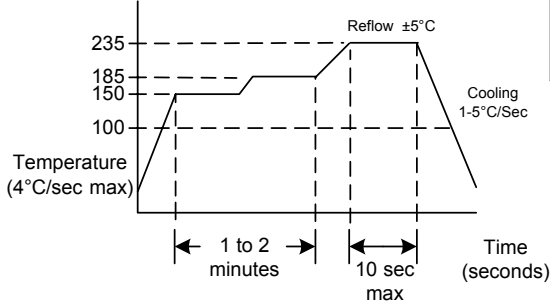
**SUGGESTED PAD LAYOUT**



Bypass Capacitor Recommended



**RECOMMENDED REFLOW SOLDERING PROFILE**



Tri-State Function	
Function pin 1	Output pin
Open	Active
"1" level 2.4V Min	Active
"0" level 0.4V Max	High Z

**Crystek Part Number Guide**

Example: C3292-44.736MHZ  
 Intermediate Temp: CM3292-44.736MHZ  
 Extended Temp: CE3292-44.736MHZ  
 C= 0°C to 70°C  
 \*CM= -20°C to 70°C, \*CE= -40°C to 85°C

Symmetry 40/60%	
Part Number	Freq. Stability
C*3290	+/- 100ppm
C*3292	+/- 50ppm
C*3291	+/- 25ppm
C*3298	+/- 20ppm
C 3297	+/- 10ppm
Symmetry 45/55%	
Part Number	Freq. Stability
C*3990	+/- 100ppm
C*3992	+/- 50ppm
C*3991	+/- 25ppm
C*3998	+/- 20ppm
C 3997	+/- 10ppm

Specifications subject to change without notice.

**TD-02074 Rev.D**

