

Crystal filter

QF 2.5-U0290/04



Application

- 8 pol filter
- i.f.- filter
- use in mobile and stationary transceivers

Limiting values		Unit	Value
Center frequency	f_0	MHz	2.5
Insertion loss		dB	≤ 4.0
Pass band at 6.0 dB		kHz	$+<0.3\dots>3.04$
Ripple in pass band	$f_0 + 0.59\dots2.375$ kHz	dB	≤ 2.0
	at $-10\dots+55^\circ\text{C}$ $f_0 + 0.55\dots2.5$ kHz	dB	≤ 2.0
Stop band attenuation	$f_0 - 0.4$ kHz; $f_0 + 7.5$ kHz	dB	≥ 40
Alternate attenuation		dB	> 60 (except spurious)
Input power		mW	< 10

Terminating impedance Z

R1 || C1

Ohm/pF 600 || 0

R2 || C2

Ohm/pF 600 || 0

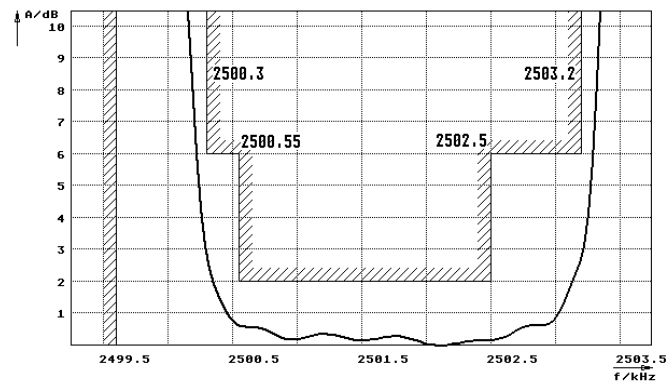
Operating temp. range

$^\circ\text{C}$

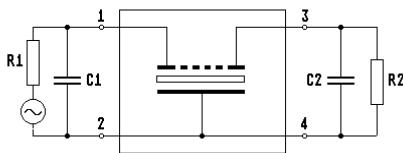
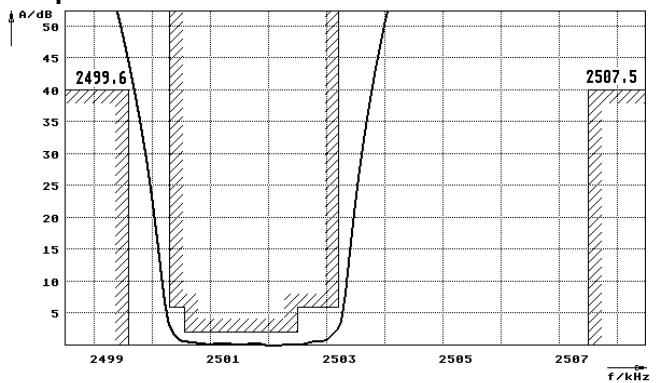
$-25\dots+70$

Characteristics QF 2.5-U0290/04

Pass band



Stop band



- Pin connections:
- | | |
|---|---------------|
| 1 | Input |
| 2 | Ground-Input |
| 3 | Output |
| 4 | Ground-Output |

