

**PLEASE CHECK WWW.MOLEX.COM FOR LATEST PART INFORMATION**

**Part Number:** [0008650815](#)  
**Status:** **Active**  
**Overview:** [kk](#)  
**Description:** KK® Crimp Terminal 6459, 22-30 AWG, Reel, Phosphor Bronze Selective Gold (Au)

**Documents:**

[Drawing \(PDF\)](#) [RoHS Certificate of Compliance \(PDF\)](#)  
[Product Specification PS-10-07 \(PDF\)](#)

**General**

Product Family	Crimp Terminals
Series	<a href="#">6459</a>
Crimp Quality Equipment	Yes
Overview	<a href="#">kk</a>
Product Name	KK®

**Physical**

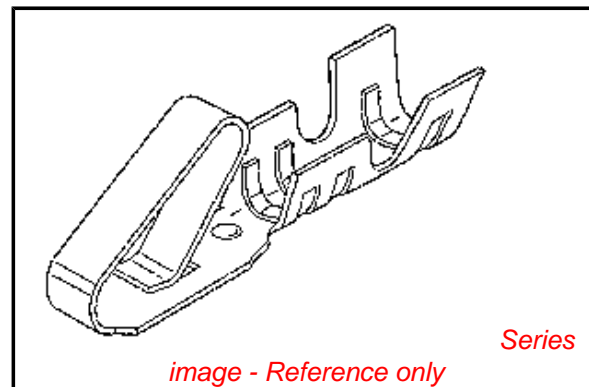
Gender	Female
Material - Metal	Phosphor Bronze
Material - Plating Mating	Gold
Packaging Type	Reel
Plating min: Mating (µin)	15
Plating min: Mating (µm)	0.38
Termination Interface: Style	Crimp or Compression
Wire Insulation Diameter	1.57mm (.062") max.
Wire Size AWG	22, 24, 26, 28, 30
Wire Size mm²	N/A

**Material Info**

Old Part Number	6459-(555)
-----------------	------------

**Reference - Drawing Numbers**

Product Specification	PS-10-07
Sales Drawing	SD-6459



*image - Reference only*

**EU RoHS**

**ELV and RoHS  
Compliant**  
**REACH SVHC  
Contains SVHC: No**  
**Halogen-Free  
Status**

**China RoHS**



**Need more information on product  
environmental compliance?**

Email [productcompliance@molex.com](mailto:productcompliance@molex.com)  
 For a multiple part number RoHS Certificate of Compliance, [click here](#)

Please visit the [Contact Us](#) section for any non-product compliance questions.

**Search Parts in this Series**

[6459Series](#)

**Application Tooling | [FAQ](#)**

*Tooling specifications and manuals are found by selecting the products below. Crimp Height Specifications are then contained in the Application Tooling Specification document.*

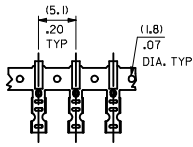
**Global**

Description	Product #
Mini-Mac™ Applicator, Use with Small Wire Insulation Diameter	<a href="#">0638882100</a>
Mini-Mac™ Applicator, Use with Large Wire Insulation Diameter	<a href="#">0638882000</a>
Extraction Tool	<a href="#">0011030022</a>
Terminator Die	<a href="#">0011402265</a>
Insertion Tool	<a href="#">0638120000</a>

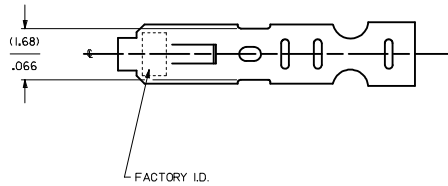
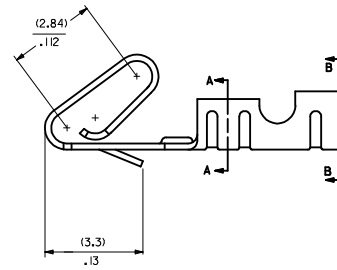
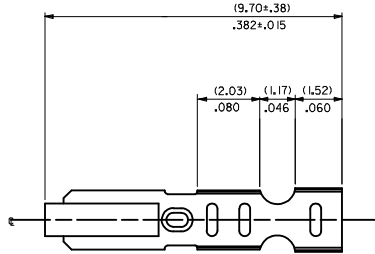
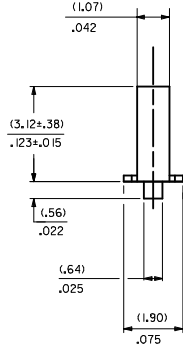
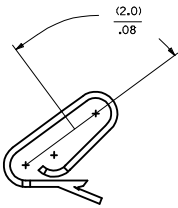
This document was generated on 05/17/2010

**PLEASE CHECK [WWW.MOLEX.COM](http://WWW.MOLEX.COM) FOR LATEST PART INFORMATION**

CARRIER VIEW

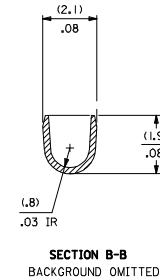
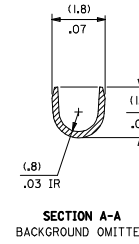


SELECT GOLD LOCATION



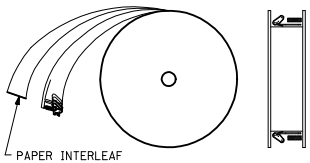
NOTES

- MATERIAL:  
(0.203-0.010)/.0080+.0004 THICK PHOS BRONZE
- FINISH:  
122 - OVERALL TIN: (0.00381)/.000150 MIN. TIN OVER  
(0.00076)/.000030 MIN NICKEL  
224 - OVERALL TIN: (0.00508)/.000200 MIN. TIN OVER  
(0.00127)/.000050 MIN NICKEL  
231 - SELECT GOLD: (0.00076)/.000030 MIN.  
SELECT TIN: (0.00254)/.000100 MIN.  
OVERALL NICKEL UNDERPLATE: (0.00127)/.000050 MIN.  
#P909 - OVERALL HOT TIN DIP: (0.00254)/.000100 MIN.  
550 - SELECT GOLD: (0.000381)/.000015 MIN.  
OVERALL GOLD FLASH: (0.00005)/.000002 MIN.  
OVERALL NICKEL UNDERPLATE: (0.00076)/.000030 MIN.  
555- SELECT GOLD: (0.000381)/.000015 MIN.  
OVERALL NICKEL UNDERPLATE: (0.00076)/.000030  
558 - SELECT GOLD: (0.00076)/.000030 MIN.  
OVERALL GOLD FLASH: (0.00005)/.000002 MIN.  
OVERALL NICKEL UNDERPLATE: (0.00127)/.000050 MIN.  
561- SELECT GOLD: (0.00076)/.000030 MIN.  
OVERALL NICKEL UNDERPLATE: (0.00127)/.000050  
\*THE PRIMARY SHIPPING CARTON WILL BE LABELED "COMPLIANT TO RoHS  
DIRECTIVE 2002/95/EC AND ELV ANNEX II OF DIRECTIVE 2000/53/EC."  
CARTONS WITHOUT THIS LABEL MAY CONTAIN PRODUCT WITH TIN-LEAD PLATING.
- PRODUCT SPEC: PS-10-07
- PACKAGING SPECIFICATION: NONE
- CRIMP IS FOR 22-30 GA WIRE WITH (157)/.062 DIA INSULATION MAX.
- INSERTION FORCE OF TERMINAL INTO (2.54)/.100 CENTERLINE CONNECTOR IS 2.5 LBS. MAX
- TERMINALS WILL RETAIN 8 LBS PULL FOR 1 MIN. IN A (2.54)/.100 CENTERLINE HOUSING.
- DIMENSIONS GIVEN ACROSS CENTERLINES ARE SYMMETRICAL ABOUT THOSE CENTERLINES  
WITHIN HALF THE TOTAL TOLERANCE.
- THIS PART CONFORMS TO CLASS B REQUIREMENTS OF COSMETIC SPECIFICATION PS-45499-002



6459-(\*\*\*\*)\*  
FORM  
L=L.OOSE  
A=CHAIN PER DETAIL A  
PLATING  
SEE NOTE 2

WINDING DETAIL A



CORRECT MATERIAL IEC NO: UCF2009-0674 DRAWN BY: DRWNK/PPER CHYKDS/SSOUSEK APPROV: FSW/TH 2008/09/18 2008/09/29 2008/09/29	QUALITY SYMBOLS	GENERAL TOLERANCES (UNLESS SPECIFIED)	DIMENSION STYLE	SCALE	DESIGN UNITS	THIRD ANGLE PROJECTION
	=0 =0	mm INCH 4 PLACES ± --- ± --- 3 PLACES ± --- ± .005 2 PLACES ± 0.13 ± .010 1 PLACE ± 0.25 ± --- ANGULAR ±1/2°	IN/MM DRAWN BY: SAMIEC CHECKED BY: DATE PATEL DATE: 01/21/92 APPROVED BY: ENZ DATE: 01/21/92	---	INCH	TITLE: CRIMP TERMINAL 22-30 GA WIRE SAME AS 2759 EXCEPT MATL MOLEX INCORPORATED DOCUMENT NO. SD-6459
	DRAFT WHERE APPLICABLE MUST REMAIN WITHIN DIMENSIONS	MATERIAL NO. SEE CHART SIZE D THIS DRAWING CONTAINS INFORMATION THAT IS PROPRIETARY TO MOLEX INCORPORATED AND SHOULD NOT BE USED WITHOUT WRITTEN PERMISSION	SHEET NO. 1 OF 2			

6459-(****)*									
PART NO.	ENG. NO.	PART NO.	ENG. NO.	PART NO.	ENG. NO.	PART NO.	ENG. NO.	PART NO.	ENG. NO.
08-52-0101	6459-(P909)								
08-52-0123	6459-(P909)IL								
08-65-0801	6459-(561)								
	6459-(561)IL								
08-52-0118	6459-(224)								
	6459-(224)IL								
08-52-0121	6459-(122)								
08-52-0122	6459-(122)IL								
08-65-0811	6459-(558)								
08-65-0812	6459-(558)IL								
08-65-0815	6459-(555)								
08-65-0816	6459-(555)IL								
08-65-0813	6459-(550)								
08-65-0814	6459-(550)IL								
08-65-0817	6459-(231)								
08-65-0818	6459-(231)IL								

<b>REMOVE 6459-(999)</b> REC NO: UCP/2008-2190 DRW: WADERR 2008/03/17 CHKD: SCHMIDT 2008/03/18 APPR: FSK/TH 2008/03/24	QUALITY SYMBOLS ▽=0 ▽=0	GENERAL TOLERANCES (UNLESS SPECIFIED) <table border="1"> <thead> <tr> <th></th> <th>mm</th> <th>INCH</th> </tr> </thead> <tbody> <tr> <td>4 PLACES ±</td> <td>---</td> <td>---</td> </tr> <tr> <td>3 PLACES ±</td> <td>---</td> <td>±.005</td> </tr> <tr> <td>2 PLACES ±</td> <td>0.13</td> <td>±.010</td> </tr> <tr> <td>1 PLACE ±</td> <td>0.25</td> <td>---</td> </tr> </tbody> </table> ANGULAR ±1/2°		mm	INCH	4 PLACES ±	---	---	3 PLACES ±	---	±.005	2 PLACES ±	0.13	±.010	1 PLACE ±	0.25	---	DIMENSION STYLE IN/MM	SCALE --- INCH	DESIGN UNITS INCH	THIRD ANGLE PROJECTION
		mm	INCH																		
	4 PLACES ±	---	---																		
	3 PLACES ±	---	±.005																		
2 PLACES ±	0.13	±.010																			
1 PLACE ±	0.25	---																			
DRAWN BY SAMIEC	DATE 01/21/92	CHECKED BY PATEL	DATE 01/21/92	APPROVED BY LENZ	DATE 01/21/92	TITLE CRIMP TERMINAL 22-30 GA WIRE SAME AS 2759 EXCEPT MATL															
MATERIAL NO. SEE CHART	DOCUMENT NO. SD-6459	MOLEX INCORPORATED	SHEET NO. 2 OF 2	THIS DRAWING CONTAINS INFORMATION THAT IS PROPRIETARY TO MOLEX INCORPORATED AND SHOULD NOT BE USED WITHOUT WRITTEN PERMISSION																	