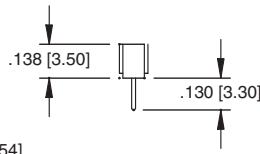
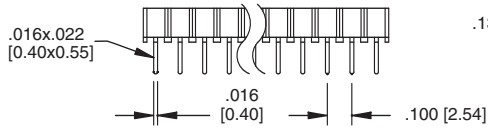
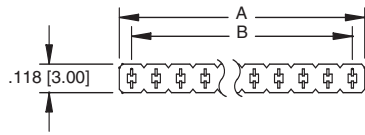


Ordering Information pg. 301

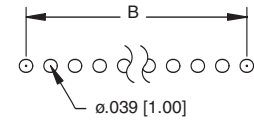


A = .100 [2.54] X No. of Positions
B = .100 [2.54] X No. of Spaces

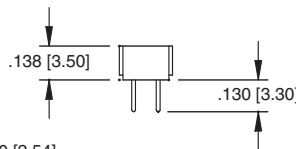
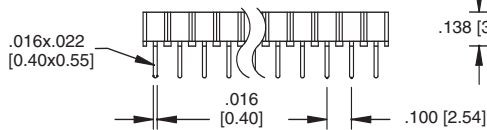
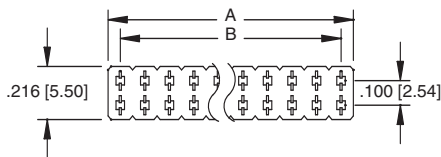


RSVL-1A-18-G

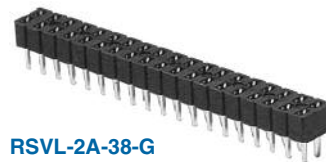
RSVL-1A



Recommended PCB Layout

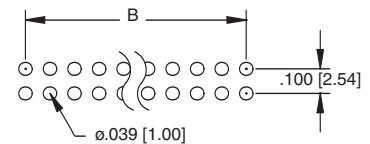


A = .100 [2.54] X No. of Positions Per Row
B = .100 [2.54] X No. of Spaces

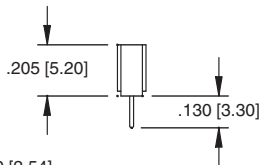
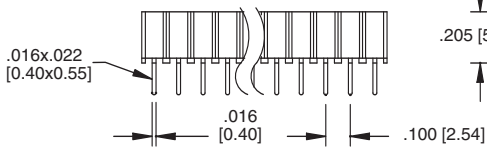
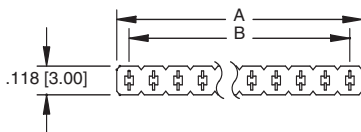


RSVL-2A-38-G

RSVL-2A



Recommended PCB Layout

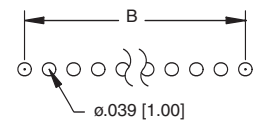


A = .100 [2.54] X No. of Positions
B = .100 [2.54] X No. of Spaces

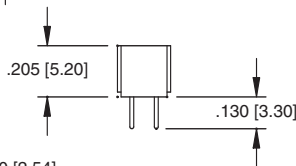
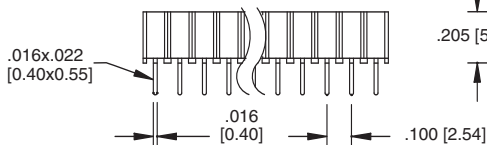
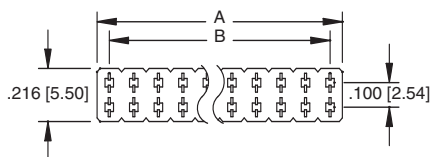


RSVL-1B-18-G

RSVL-1B



Recommended PCB Layout

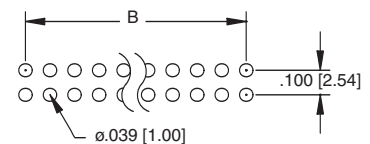


A = .100 [2.54] X No. of Positions Per Row
B = .100 [2.54] X No. of Spaces



RSVL-2B-36-G

RSVL-2B



Recommended PCB Layout