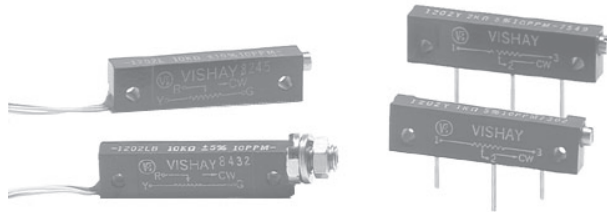


## Bulk Metal<sup>®</sup> Foil Technology Precision Trimming Potentiometers 1 1/4 Inch Rectilinear, RJ12 Style - Industrial Trimmer



Product may not be to scale

### FEATURES

- Temperature Coefficient of Resistance (TCR):  $\pm 20\text{ppm}/^\circ\text{C}$  Maximum<sup>3</sup> ( $-55^\circ\text{C}$  to  $+150^\circ\text{C}$  Ref. @  $+25^\circ\text{C}$ ); Through the wiper<sup>4</sup>:  $\pm 50\text{ppm}/^\circ\text{C}$  typical
- Load Life Stability: 0.5% Maximum  $\Delta R$  under Full Rated Power for 2000 hours @  $+85^\circ\text{C}$
- Settability: 0.1%
- Setting Stability: 0.1% Typical<sup>2</sup>; 0.5% Maximum<sup>2</sup>,  $\Delta SS$
- Power Rating<sup>5</sup>: 0.5 watts @  $+85^\circ\text{C}$
- Resistance Range: 20 $\Omega$  to 10K $\Omega$
- Tolerance:  $\pm 20\%$ ,  $\pm 10\%$

TABLE 1 - MODEL SELECTION*						
MODEL	TERMINATION STYLE	AVERAGE WEIGHT (g)	STANDARD RESISTANCE VALUES (in $\Omega$ )	STANDARD TOLERANCES	POWER RATING @ $+85^\circ\text{C}$ AMBIENT	NO. OF TURNS
1208 RJ12 Style	P-In Line PC Pins	2.5	20, 50, 100,	$\pm 20\%$	0.5W	25 $\pm$ 2
	Y-Staggered PC Pins <sup>1</sup>	2.5				
	L-Flexible Wire Leads	3.3	200, 250, 500			
	LB-Flexible Wire Leads with bushings	5.1	1K, 2K, 5K, 10K	$\pm 10\%$		

\*See Figures 1 and 2 in this data sheet.

### NOTES:

1. Preferred termination style for current 1-1/4 Inch rectilinear trimmers (staggered PC pins present a sturdier mounting arrangement for shock, vibration, and impact situations.)
2. Maximum is 1.0% A.Q.L. standard for all specifications except TCR. (For TCR information see notes 3 and 4). "Typical" is a designers reference which represents that 85% of the lots supplied, over a long period of time, will be at least the figure stated or better.
3. Maximum TCR applies to the 3  $\sigma$  (sigma) limit or 99.73% of a production lot. (Measured end-to-end with wiper off the element.)
4. Measurements of TCR through the wiper are influenced more by setting stability and the percentage of the total resistance in use (at the wiper) than by fundamental resistance change due to temperature alone. The parameter shown is a 2  $\sigma$  distribution typifying the behavior of the device when used with 40% or more of the total resistance in use.
5. Derated linearly from full power @  $+85^\circ\text{C}$  to zero (0) watts @  $+150^\circ\text{C}$ . See Figure 3 in this data sheet.
6. Independent of resistance value. 3 ohms maximum available on special request.

Special Available Options:

- Special Marking
- Special lengths for lead wires (L, LB Style)
- Hooked leads
- Alternate bushing and PC combinations
- Burn-in and screening operations

### ADDITIONAL SPECIFICATIONS:

- Contact Resistance Variation – CRV (noise): 10 ohms Maximum<sup>6</sup>
- Hop-off: 0.25% Typical; 1.0% Maximum
- Operating Temperature Range:  $-55^\circ\text{C}$  to  $+150^\circ\text{C}$
- Adjustment Turns: 25  $\pm$  2
- Mechanical Stops: Wiper Idles – No Discontinuity

VISHAY FOIL • FRANCE +33.4.93.37.28.24 FAX: +33.4.93.37.27.31  
 • GERMANY +49.9287.710 FAX: +49.9287.70435  
 • ISRAEL +972.3.557.0945 FAX: +972.3.558.9121

• ITALY + 39.2.300.11919 FAX: +39.2.300.11999  
 • JAPAN +81.42.729.0661 FAX: +81.42.729.3400  
 • SINGAPORE +65.788.6668 FAX: +65.788.0988

• SWEDEN +46.8.594.70590 FAX: +46.8.594.70581  
 • UK +44 191 514 8237 FAX: +44 1953 457 722  
 • USA +1 610 407-4800 FAX: +1 610 640-9081

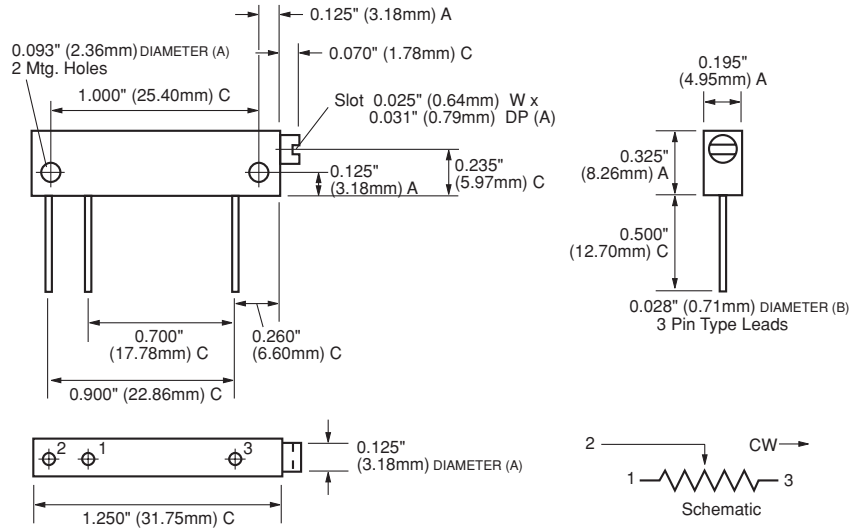
### TABLE 2 - ORDERING INFORMATION - 1208 SERIES PARTS

Please specify Vishay Model 1208 Precision Trimming Potentiometers as follows:			
Example:			
1208	P	100R	10%
MODEL NO.	TERMINATION STYLE	RESISTANCE VALUE	TOLERANCE

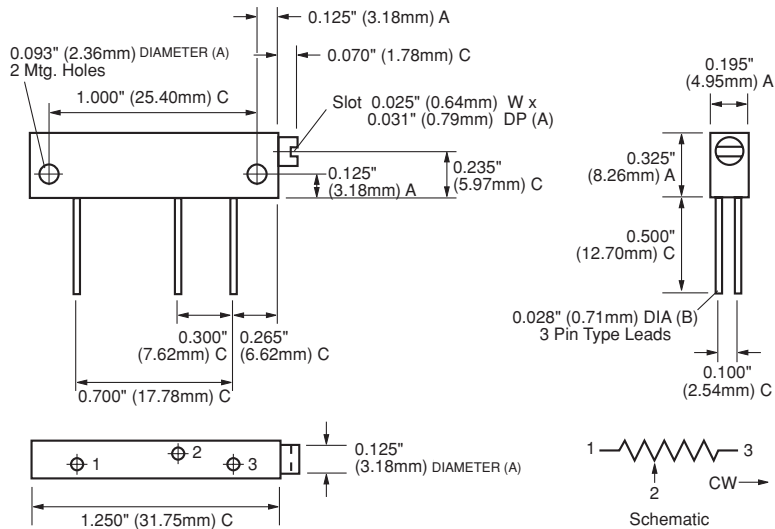
See Table 1 for Details. See Figure 1, next page for Standard Marking Illustration.

**FIGURE 1 - SCHEMATIC AND DIMENSIONS** in inches (millimeters)

**1208P**  
(In-Line Pins\*)



**1208Y**  
(Staggered Pins\*)

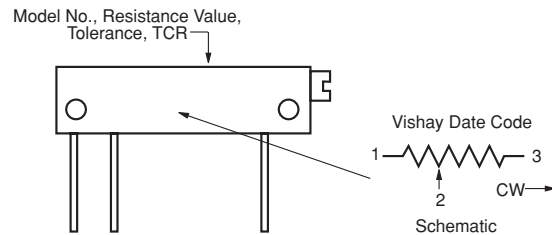


**TOLERANCES**

- A = ± 0.005 Inches (0.13mm)
- B = ± 0.003 Inches (0.08mm)
- C = ± 0.010 Inches (0.25mm)

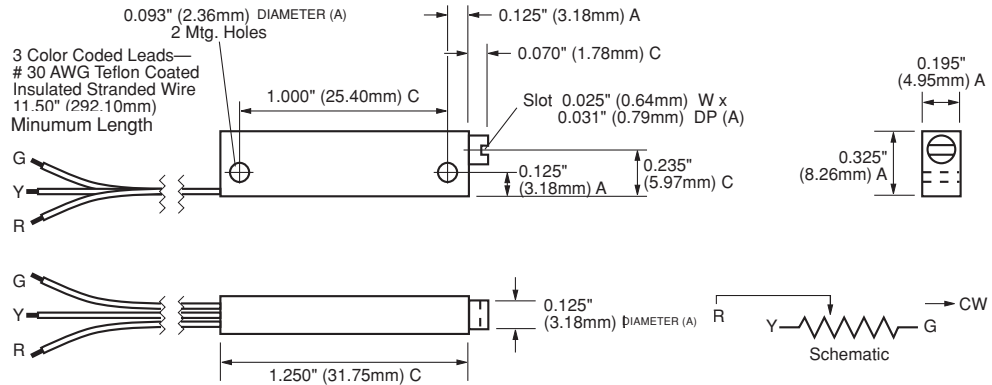
\*Pin leads are gold plated nickel which are solderable or weldable

**STANDARD MARKING ILLUSTRATION**

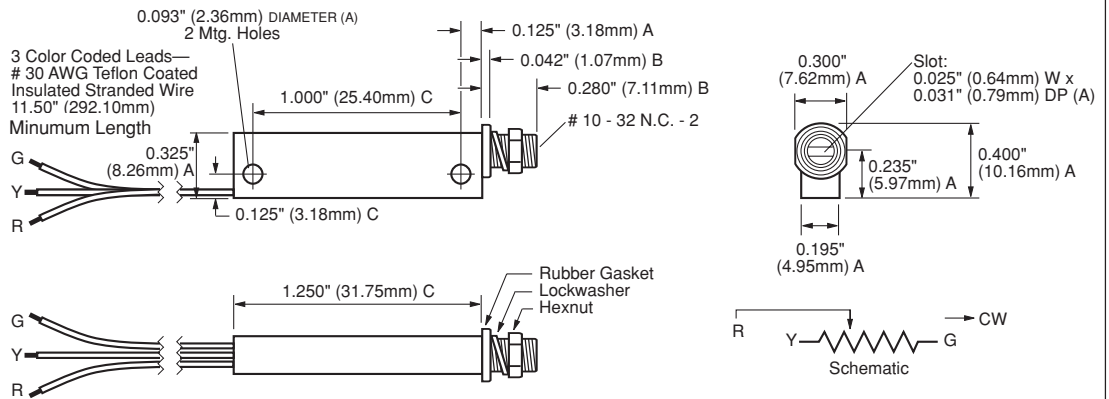


**FIGURE 2 - SCHEMATIC AND DIMENSIONS** in inches (millimeters)

**1208L**  
(Flexible Leads)



**1208LB**  
(Panel Mounted)

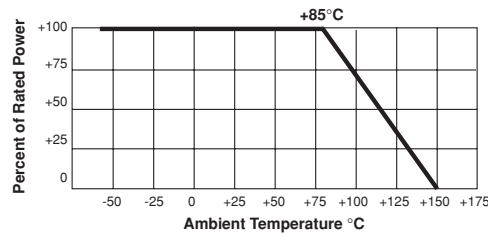


**TOLERANCES**

- A = ± 0.005 Inches (0.13mm)
- B = ± 0.003 Inches (0.08mm)
- C = ± 0.010 Inches (0.25mm)

Standard marking shown on previous page.

**FIGURE 3 - POWER DERATING CURVE**



TRIMMERS