

XO5040 Series

2x2 inch, 15.0 Volt, HCMOS/Sinewave, DOCXO

- Double oven OCXO with exceptional stability
- An ultra low aging, SC-cut resonator

Model	Frequency (MHz)	Temperature Range (°C)	Temperature Stability (referenced to 35°C)	Aging Over 1 year	Supply Voltage
XO5040 and XO514X	10	0 to +70	$\pm 2 \times 10^{-10}$	$\pm 1.0 \times 10^{-8}$	+15 Vdc $\pm 5\%$
Options	5 to 15	Consult Factory			+12 Vdc $\pm 5\%$

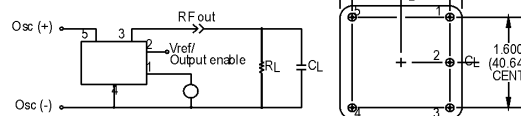
Additional Specifications	SC-Cut	AT-Cut		
Aging per day	$\pm 2.0 \times 10^{-10}$	$\pm 5.0 \times 10^{-10}$		
Current*	*250/180 mA max @ 25°C steady state 750 mA max @ Turn on, all temps	*250/180 mA max @ 25°C steady state 750 mA max @ Turn on, all temps		
Start-up time	5 sec max	5 sec max		
Warm-up time @ 0°C	Freq. Within $\pm 3.5 \times 10^{-8}$ in 20 min max	Freq. Within $\pm 5.0 \times 10^{-8}$ in 20 min max		
Electronic frequency control				
Input impedance	>30 k Ω	>30 k Ω		
Tuning voltage range	0 – 10 V	0 – 10 V		
Center frequency voltage	5 ± 0.5 V	5 ± 0.5 V		
Frequency tuning range	± 0.25 to $\pm 0.5 \times 10^{-6}$	± 0.5 to $\pm 1.0 \times 10^{-6}$		
Short term stability	$1.0 \times 10^{-11}/\text{sec}$	$2 \times 10^{-11}/\text{sec}$		
Phase Noise @	5MHz	10MHz	15MHz	10MHz
1Hz	-100 dbc/Hz	-90 dbc/Hz	-80 dbc/Hz	-80 dbc/Hz
10 Hz	-120 dbc/Hz	-120 dbc/Hz	-120 dbc/Hz	-115 dbc/Hz
100 Hz	-140 dbc/Hz	-140 dbc/Hz	-130 dbc/Hz	-135 dbc/Hz
1 kHz	-145 dbc/Hz	-145 dbc/Hz	-135 dbc/Hz	-145 dbc/Hz
10 kHz	-145 dbc/Hz	-150 dbc/Hz	-140 dbc/Hz	-145 dbc/Hz
Sinewave Version				
Spurious & subharmonics	<-40 dBc	<-85 dBc	<-45 dBc	<-85 dBc
Harmonics	<-30 dBc	<-40 dBc	<-30 dBc	<-40 dBc
Output level into 50 Ω	+7 ± 2 dBm	+7 ± 2 dBm	+12 ± 1 dBm	+7 ± 1 dBm
HCMOS Version				
Duty cycle	40/60			
Load	2 Gates			

*See Table

Model	Height	Current Steady State @ 25°C
XO5040	1.50	180 mA
XO5140	1.00	250 mA

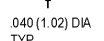
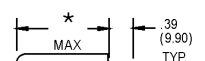
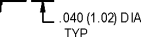
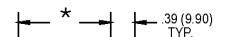
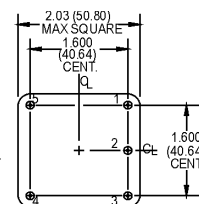
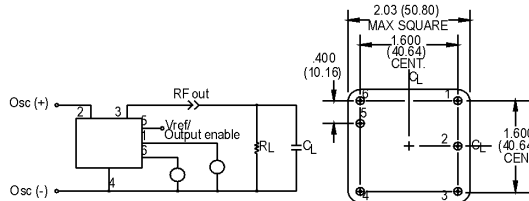
STD: PIN CONNECTIONS

1. FREQUENCY ADJUST
2. Vref/OUTPUT ENABLE
3. RF OUTPUT
4. CASE GROUND & SUPPLY RETURN
5. SUPPLY (+)

Pin numbers shown for ref. only.
Numbers are not marked on unit.

OPTION: PIN CONNECTIONS

1. FREQUENCY ADJUST (COARSE)
2. SUPPLY (+)
3. RF OUTPUT
4. CASE GROUND & SUPPLY RETURN
5. Vref/OUTPUT ENABLE
6. FREQUENCY ADJUST (FINE)

Pin numbers shown for ref. only.
Numbers are not marked on unit.

MtronPTI reserves the right to make changes to the product(s) and service(s) described herein without notice. No liability is assumed as a result of their use or application.

Please see www.mtronpti.com for our complete offering and detailed datasheets. Contact us for your application specific requirements: MtronPTI 1-800-762-8800.