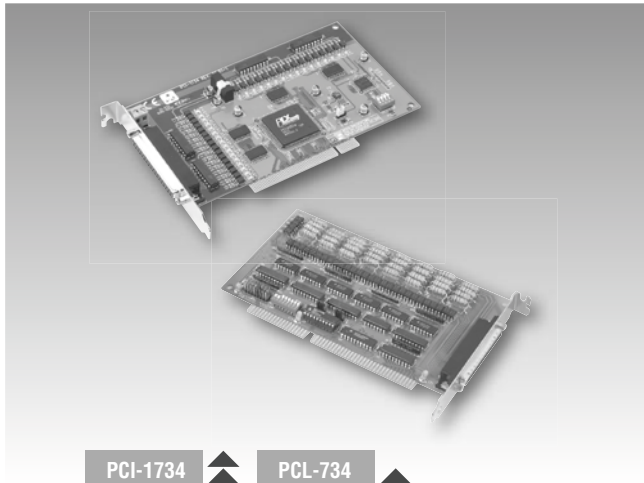


# PCI-1734

# PCL-734

## 32-ch Isolated Digital Output Card with PCI Interface

## 32-ch Isolated Digital Output Card with ISA Interface



PCI-1734

PCL-734

### Specifications

#### Isolated Digital Output

- Channels: 32 (16-ch/group)
- Output Type: Sink (NPN)
- Isolation Protection: PCI-1734: 2,500 V<sub>DC</sub>  
PCL-734: 1,000 V<sub>DC</sub>
- Output Voltage: 5 ~ 40 V<sub>DC</sub>
- Sink Current: 200 mA max./channel
- Opto-Isolator Response: PCL-734: 100 μs  
PCI-1734: 25 μs

#### General

- Bus Type: PCI-1734: PCI V2.2  
PCL-734: ISA
- I/O Connector Type: 37-pin D-type female
- Dimensions (L x H): PCL-734: 185 x 100 mm (7.3" x 3.9")  
PCI-1734: 175 x 100 mm (6.9" x 3.9")
- Power Consumption: PCL-734: Typical: 5 V @ 330 mA  
Max: 5 V @ 500 mA  
PCI-1734: Typical: 5 V @ 150 mA, 12 V @ 15 mA  
Max: 5 V @ 250 mA, 12 V @ 25 mA
- Operating Temperature: 0 ~ 60° C (32 ~ 140° F)
- Storing Temperature: PCL-734: -20~70° C (-4~158° F)  
PCI-1734: -25 ~ 85° C (-13 ~ 185° F)
- Storing Humidity: 5 ~ 95% (IEC 68-2-3)  
non-condensing

### Ordering Information

- PCI-1734: 32-channel isolated digital PCI output card, user manual and driver CD-ROM (cable not included)
- PCL-734: 32-channel isolated digital ISA output card, user manual and driver CD-ROM (cable not included)
- PCL-10137-2: DB37 cable assembly, 2 m
- PCL-10137-3: DB37 cable assembly, 3 m
- PCLD-780: Universal screw terminal board
- PCLD-880: Universal screw terminal board
- ADAM-3937: DB37 wiring terminal for DIN-rail mounting

www.DataSheet4U.com

### Features

- 32 isolated digital output channels
- High output driving capacity
- High-voltage isolation on output channels
- High sink current on isolated output channels (200 mA/channel)
- Integral suppression diodes for inductive loads
- Wide output range (5 ~ 40 V<sub>DC</sub>)
- D-type connectors for isolated output channels

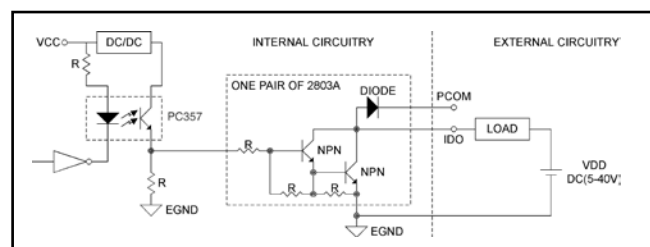
### Applications

- Industrial On/Off control
- Contact closure monitoring
- Switch status sensing
- BCD interfacing
- Digital input control
- Industrial and lab automation

### Pin Assignments

#### CN1 of PCI-1734

|       |    |    |       |
|-------|----|----|-------|
| ID00  | 1  | 20 | ID01  |
| ID02  | 2  | 21 | ID03  |
| ID04  | 3  | 22 | ID05  |
| ID06  | 4  | 23 | ID07  |
| PCOM1 | 5  | 24 | ID08  |
| ID09  | 6  | 25 | ID010 |
| ID011 | 7  | 26 | ID012 |
| ID013 | 8  | 27 | ID014 |
| ID015 | 9  | 28 | PCOM2 |
| ID016 | 10 | 29 | ID017 |
| ID018 | 11 | 30 | ID019 |
| ID020 | 12 | 31 | ID021 |
| ID022 | 13 | 32 | ID023 |
| PCOM3 | 14 | 33 | ID024 |
| ID025 | 15 | 34 | ID026 |
| ID027 | 16 | 35 | ID028 |
| ID029 | 17 | 36 | ID030 |
| ID031 | 18 | 37 | ID030 |
| E.GND | 19 |    | PCOM4 |



Isolated Output Circuit Diagram

www.DataSheet4U.com