

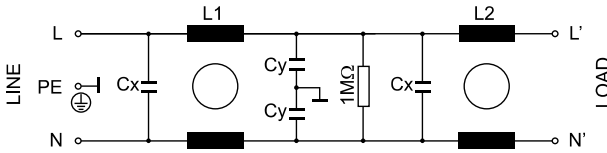
FF

General Purpose

www.DataSheet4U.com

RFI Power Line Filters

Electrical schematics



General Specifications

Maximum operating voltage: 250Vac.

Operating frequency: DC - 60Hz.

Hipot test voltage:

L/N->PE: 1800Vac 2s.

L->N: 1700 Vdc 2s.

Application class:

HPF Acc. TO DIN 40040

(-25°C/+85°C/95% RH, 30d).

Flammability class: UL 94 V2.

General Purpose

Double stage filter.

High insertion loss.

General purpose filter.

Product List

TYPE	I	L1	L2	CX	C Y	HOUSING	L.CURRENT	CONNECTION	WEIGHT ±g
FF-3X	3 Amp	2 mH	2 mH	100 nF	2,2 nF	215	0,21mA	AWG18 WIRE	170
FF-3Z						214		FASTON 6,3mm	165
FF-6X	6 Amp	0,75 mH	0,75 mH	100 nF	2,2 nF	215	0,21mA	AWG18 WIRE	172
FF-6Z						214		FASTON 6,3mm	166
FF-10Z	10 Amp	0,50 mH	0,50 mH	100 nF	2,2 nF	216	0,21mA	FASTON 6,3mm	223
FF-20W	20 Amp	0,48 mH	0,48 mH	100 nF	2,2 nF	223	0,21mA	M6 SCREW	564
FF-20Z						221		FASTON 6,3mm	429

Insertion Loss

----- ASYM
 ——— SYM

