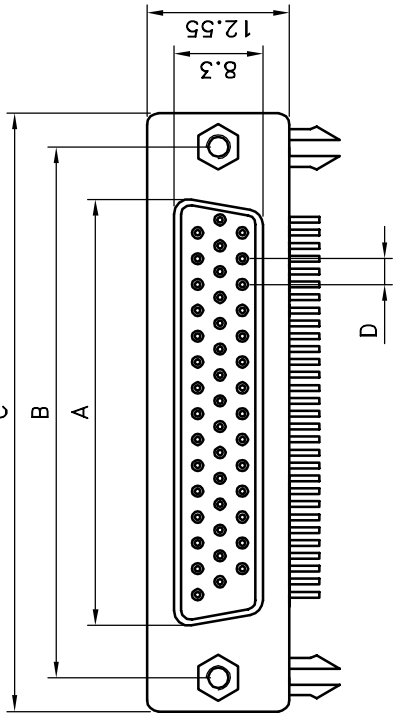


POSITION	A	B	C	D
15	16.33	25.00	30.80	2.29
26	24.66	33.30	39.20	2.29
44	38.38	47.10	53.10	2.29
62	54.84	63.50	69.40	2.41

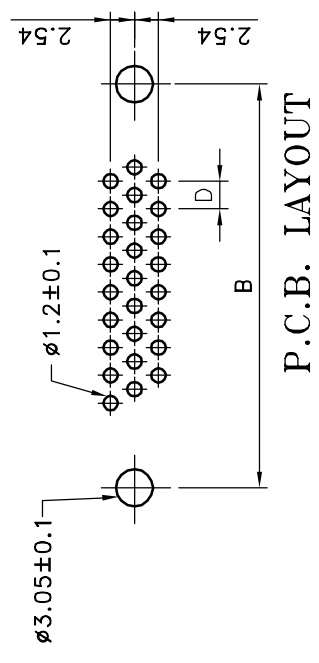
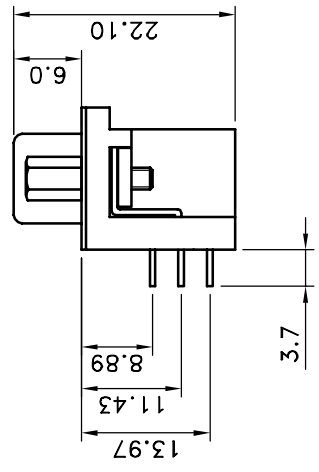
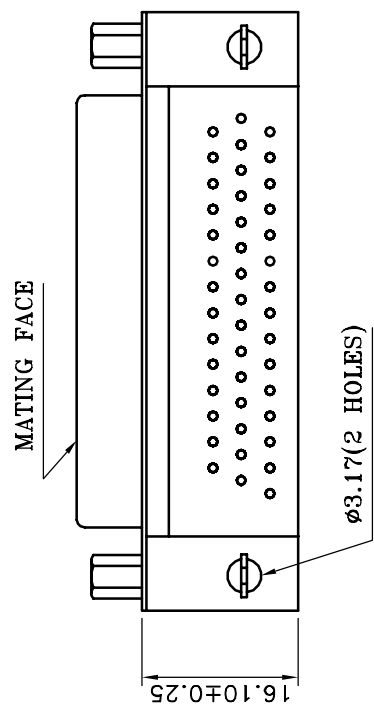
Specifications:  
 Current rating:3.0A AC,DC  
 Voltage rating:250V AC,DC  
 Temperature range:-40°C ~ +85°C  
 Contact resistance:30mohm max.  
 Insulation:5,000Mohm min.  
 Withstanding voltage:1,000V AC/Minute



Materials:  
 Insulator:PBT Glass fiber 30%(UL94V-0)  
 Contact:Copper alloy Nickel Undercoated, Gold plated  
 Shell:Metal Iron with nickel plated

HOW TO ORDER  
 5510-~~XXS~~-02A-01

- 01:GOLD PLATED
- RIVET W/BOARD LOCK /HEX SCREW
- S: FEMALE
- NO. OF POSITIONS



P.C.B. LAYOUT

REV	DATE	FILE	BY
A	19-JAN-2005		Jerry Chen

DRAWN:		CHECKED:		APPROVAL:		GENERAL TOLERANCE:		DESCRIPTION:		SIZE	
Jerry Chen		Jeremy		Mike		.X = ±0.2 .XX = ±0.15		D-SUB HIGH DENSITY RIGHT ANGLE FEMALE		A4	
UNIT: mm		SCALE:		SHEET: 1 / 1		PART NO:		5510-XXS-02A-01			
PROJECTION:											

