

PLEASE CHECK WWW.MOLEX.COM FOR LATEST PART INFORMATION

Part Number: [0022272191](#)
Status: **Active**
Overview: [kk](#)
Description: 2.54mm (.100") Pitch KK® Wire-to-Board Header, Vertical, with Friction Lock, 19 Circuits, Tin (Sn) Plating

Documents:

[3D Model](#) [Product Specification PS-99020-0088 \(PDF\)](#)
[Drawing \(PDF\)](#) [RoHS Certificate of Compliance \(PDF\)](#)
[Product Specification PS-10-07 \(PDF\)](#)

Agency Certification

CSA LR19980
 UL E29179

General

Product Family PCB Headers
 Series [6410](#)
 Application Wire-to-Board
 Overview [kk](#)
 Product Name KK®

Physical

Breakaway No
 Circuits (Loaded) 19
 Circuits (maximum) 19
 Color - Resin Natural (White)
 First Mate / Last Break No
 Flammability 94V-0
 Glow-Wire Compliant No
 Guide to Mating Part No
 Keying to Mating Part None
 Lock to Mating Part Yes
 Material - Metal Brass
 Material - Plating Mating Tin
 Material - Plating Termination Tin
 Material - Resin Nylon
 Number of Rows 1
 Orientation Vertical
 PC Tail Length (in) 0.140 In
 PC Tail Length (mm) 3.56 mm
 PCB Locator No
 PCB Retention None
 PCB Thickness Recommended (in) 0.063 In
 PCB Thickness Recommended (mm) 1.60 mm
 Packaging Type Bag
 Pitch - Mating Interface (in) 0.100 In
 Pitch - Mating Interface (mm) 2.54 mm
 Pitch - Term. Interface (in) 0.100 In
 Pitch - Term. Interface (mm) 2.54 mm
 Plating min: Mating (µin) 200
 Plating min: Mating (µm) 5
 Plating min: Termination (µin) 200
 Plating min: Termination (µm) 5
 Polarized to Mating Part Yes
 Polarized to PCB No



EU RoHS

**ELV and RoHS
Compliant**
REACH SVHC
 Not Reviewed
**Halogen-Free
Status**
Not Reviewed

China RoHS



**Need more information on product
environmental compliance?**

Email productcompliance@molex.com
 For a multiple part number RoHS Certificate of Compliance, [click here](#)

Please visit the [Contact Us](#) section for any non-product compliance questions.

Search Parts in this Series

[6410Series](#)

Mates With

KK® Crimp Terminal Housing [2695](#) , [6471](#)

Shrouded	Partial
Stackable	No
Surface Mount Compatible (SMC)	No
Temperature Range - Operating	0°C to +75°C
Termination Interface: Style	Through Hole

Electrical

Current - Maximum per Contact	4A
Voltage - Maximum	250V

Solder Process Data

Lead-free Process Capability	Wave Capable (TH only)
------------------------------	------------------------

Material Info

Old Part Number	AE-6410-19A(102)
-----------------	------------------

Reference - Drawing Numbers

Packaging Specification	PK-6373-001
Product Specification	PS-10-07, PS-99020-0088
Sales Drawing	SDAE-6410-N

This document was generated on 05/24/2010

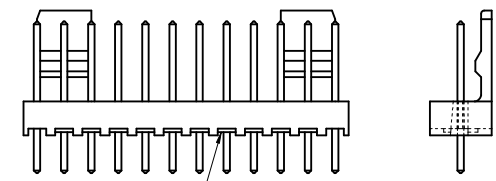
PLEASE CHECK WWW.MOLEX.COM FOR LATEST PART INFORMATION

NO. OF CCTS	DIMN. "A"	DIMN. "B"
2	(2.54) .100	(5.08) .200
3	(5.08) .200	(7.62) .300
4	(7.62) .300	(10.16) .400
5	(10.16) .400	(12.70) .500
6	(12.70) .500	(15.24) .600
7	(15.24) .600	(17.78) .700
8	(17.78) .700	(20.32) .800
9	(20.32) .800	(22.86) .900
10	(22.86) .900	(25.40) 1.000
11	(25.40) 1.000	(27.94) 1.100
12	(27.94) 1.100	(30.48) 1.200
13	(30.48) 1.200	(33.02) 1.300
14	(33.02) 1.300	(35.56) 1.400
15	(35.56) 1.400	(38.10) 1.500
16	(38.10) 1.500	(40.64) 1.600
17	(40.64) 1.600	(43.18) 1.700
18	(43.18) 1.700	(45.72) 1.800
19	(45.72) 1.800	(48.26) 1.900
20	(48.26) 1.900	(50.80) 2.000
21	(50.80) 2.000	(53.34) 2.100
22	(53.34) 2.100	(55.88) 2.200
23	(55.88) 2.200	(58.42) 2.300
24	(58.42) 2.300	(60.86) 2.400
25	(60.86) 2.400	(63.50) 2.500
26	(63.50) 2.500	(66.04) 2.600
27	(66.04) 2.600	(68.58) 2.700
28	(68.58) 2.700	(71.12) 2.800



AE-6410- N * (*)

NO. OF CCTS
 WAFER ASSY. OPTION
 PLATING TYPE

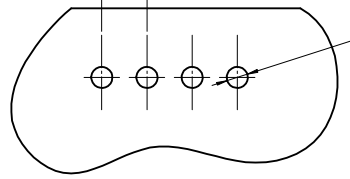


RIBS ADDED
 (4-28 CCTS. ONLY)
 ALTERNATIVE WAFER CONFIGURATION

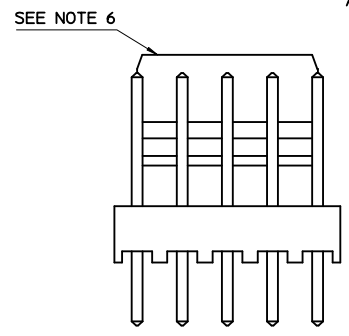
NOTES:

1. WAFER MATERIAL: NYLON, 94V-0
2. PIN PUSH OUT FORCE: (0.907 Kg)/2lbs MIN.
3. WAFERS STACKABLE END TO END WITH (2.54) / .100 BETWEEN END PINS
4. THIS PART CONFORMS TO MOLEX PROD. SPEC. PS99020-0088.
5. PIN SOLDERABILITY PER MOLEX SPEC. NO. 152.
6. SINGLE RAMP ON 2-6 CCTS TWO RAMP ON 7-28 CCTS, AS SHOWN.
7. PRODUCT SPECIFICATION: PS-99020-0087
8. PCB THICKNESS 1.6MM

[2.54 ± 0.05] TYP
 .100 ± 0.02
 NON-ACCUM.
 φ [1.19 ± 0.05] TYP
 0.47 ± 0.02



RECOMMENDED P.C.B. HOLE DIMENSIONS
 (STANDARD SERIES)



REV	DESCRIPTION	QUALITY SYMBOLS		GENERAL TOLERANCES (UNLESS SPECIFIED)		DIMENSION STYLE		SCALE	DESIGN UNITS	THIRD ANGLE PROJECTION
		mm	INCH	mm	INCH	MM/IN	4:1	METRIC	⊙ □	
ADD VOIDED OPTION		▽=0		4 PLACES ± --- ± ---		DRAWN BY	DATE	TITLE		
EC NO: E2009-0413	DRWN:BMAGUIRE 2009/02/24	▽=0		3 PLACES ± --- ± .010		T. MAHON	28/01/03	WAFER, FRICTION LOCK		
CHKD:	APPR:BMAGUIRE 2009/02/24			2 PLACES ± 0.25 ± .014		CHECKED BY	DATE	KK (2.54) / .100 FOR		
BB				1 PLACE ± 0.35 ± ---		BMAGUIRE	28/01/03	(0.64) / .025 SQ. PINS		
				ANGULAR ± .5 °		APPROVED BY	DATE	MOLEX		
						JDENNEHY	2005/03/11	MOLEX INCORPORATED		
						MATERIAL NO.	DOCUMENT NO.			
						SEE CHART	SDAE-6410-N			
						SIZE				
						A 2				
						THIS DRAWING CONTAINS INFORMATION THAT IS PROPRIETARY TO MOLEX INCORPORATED AND SHOULD NOT BE USED WITHOUT WRITTEN PERMISSION				
										SHEET NO. 1 OF 4

ENG. NO.	AE-6410-NA (102)		AE-6410-NC (102)		AE-6410-ND (102)		AE-6410-NH (102)		AE-6410-NJ (102)		AE-6410-NL (102)		
DIMN. "D"	(7.50 ±0.25) .295 ±.010		(7.14 ±0.25) .281 ±.010		(8.05 ±0.25) .317 ±.010		(7.49 ±0.25) .295 ±.010		(18.80 ±0.38) .740 ±.015		(8.50 ±0.38) .335 ±.015		
DIMN. "C"	(14.22) / .560		(20.32) / .800		(14.22) / .560		(14.98) / .590		(25.40) / 1.000		(23.80) / .937		
DIMN. "F"	(3.56) / .140 REF		(10.00) / .394 REF		(2.99) .118 REF		(4.32) / .170 REF		(3.43) / .135 REF		(12.13) / .477 REF		
PLATING	TIN MIN. (0.005)/.0002 OVER (0.0025)/.0001 COPPER MIN.		TIN MIN. (0.005)/.0002 OVER (0.0025)/.0001 COPPER MIN.		TIN MIN. (0.005)/.0002 OVER (0.0025)/.0001 COPPER MIN.		TIN MIN. (0.005)/.0002 OVER (0.0025)/.0001 COPPER MIN.		TIN MIN. (0.005)/.0002 OVER (0.0025)/.0001 COPPER MIN.		TIN MIN. (0.005)/.0002 OVER (0.0025)/.0001 COPPER MIN.		
NO. OF CIRCUITS	2	AE-6410-2A(102)	22-27-2021	AE-6410-2C(102)	38-00-6292	AE-6410-2D(102)	38-00-5882	AE-6410-2H(102)	38-00-6754	AE-6410-2J(102)	NOT TOOLED	AE-6410-2L(102)	NOT TOOLED
	3	3 A(102)	▲ 2031	3 C(102)	▲ 6293	3 D(102)	▲ 5883	3 H(102)	NOT TOOLED	3 J(102)	NOT TOOLED	L(102)	▲
	4	4 A(102)	2041	4 C(102)	6294	4 D(102)	5884	4 H(102)	22-27-2046	4 J(102)	NOT TOOLED	L(102)	
	5	5 A(102)	2051	5 C(102)	6295	5 D(102)	5885	5 H(102)	NOT TOOLED	5 J(102)	22-27-2057	L(102)	
	6	6 A(102)	2061	6 C(102)	6296	6 D(102)	5886	6 H(102)	▲	6 J(102)	NOT TOOLED	L(102)	
	7	7 A(102)	2071	7 C(102)	6297	7 D(102)	5887	7 H(102)		7 J(102)	NOT TOOLED	L(102)	
	8	8 A(102)	2081	8 C(102)	6298	8 D(102)	5888	8 H(102)		8 J(102)	22-27-2087	L(102)	
	9	9 A(102)	2091	9 C(102)	6299	9 D(102)	5889	9 H(102)		9 J(102)	NOT TOOLED	L(102)	
	10	10 A(102)	2101	10 C(102)	6300	10 D(102)	5890	10 H(102)		10 J(102)	▲	L(102)	
	11	11 A(102)	2111	11 C(102)	6301	11 D(102)	5891	11 H(102)	NOT TOOLED	11 J(102)		L(102)	
	12	12 A(102)	2121	12 C(102)	6302	12 D(102)	5892	12 H(102)	22-27-2126	12 J(102)		L(102)	
	13	13 A(102)	2131	13 C(102)	6303	13 D(102)	5893	13 H(102)	NOT TOOLED	13 J(102)		L(102)	▼
	14	14 A(102)	2141	14 C(102)	6304	14 D(102)	5894	14 H(102)	▲	14 J(102)		L(102)	NOT TOOLED
	15	15 A(102)	2151	15 C(102)	6305	15 D(102)	5895	15 H(102)		15 J(102)		L(102)	38-00-1736
	16	16 A(102)	2161	16 C(102)	6306	16 D(102)	5896	16 H(102)		16 J(102)		L(102)	NOT TOOLED
	17	17 A(102)	2171	17 C(102)	6307	17 D(102)	5897	17 H(102)		17 J(102)		L(102)	▲
	18	18 A(102)	2181	18 C(102)	6308	18 D(102)	5898	18 H(102)		18 J(102)		L(102)	
	19	19 A(102)	2191	19 C(102)	▼ 6309	19 D(102)	5899	19 H(102)		19 J(102)		L(102)	
	20	20 A(102)	2201	20 C(102)	38-00-6310	20 D(102)	5900	20 H(102)		20 J(102)		L(102)	
	21	21 A(102)	2211	21 C(102)	NOT TOOLED	21 D(102)	5901	21 H(102)		21 J(102)		L(102)	
	22	22 A(102)	2221	22 C(102)	▲	22 D(102)	5902	22 H(102)		22 J(102)		L(102)	
	23	23 A(102)	2231	23 C(102)		23 D(102)	5903	23 H(102)		23 J(102)		L(102)	
	24	24 A(102)	2241	24 C(102)		24 D(102)	5904	24 H(102)		24 J(102)		L(102)	
	25	25 A(102)	2251	25 C(102)		25 D(102)	5905	25 H(102)		25 J(102)		L(102)	
	26	26 A(102)	2261	26 C(102)		26 D(102)	5906	26 H(102)		26 J(102)		L(102)	
	27	27 A(102)	▼ 2271	27 C(102)	▼	27 D(102)	▼ 5907	27 H(102)	▼	27 J(102)	▼	L(102)	▼
	28	AE-6410-28A(102)	22-27-2281	AE-6410-28C(102)	NOT TOOLED	AE-6410-28D(102)	38-00-5908	AE-6410-28H(102)	NOT TOOLED	AE-6410-28J(102)	NOT TOOLED	AE-6410-28L(102)	NOT TOOLED

SEE SHEET 1 EC NO: E2009-0413 DRAWN: BMAGUIRE 2009/07/24 CHKD: 2009/07/24 APPR: BMAGUIRE 2009/07/24 REV: BB	QUALITY SYMBOLS ▽=0 ▽=0	GENERAL TOLERANCES (UNLESS SPECIFIED)	DIMENSION STYLE MM/IN	SCALE 4:1	DESIGN UNITS METRIC	THIRD ANGLE PROJECTION	
		mm INCH	DRAWN BY T. MAHON	DATE 28/01/03	TITLE WAFER, FRICTION LOCK KK (2.54)/.100 FOR (0.64)/.025 SQ. PINS		
		4 PLACES ± --- ± --- 3 PLACES ± --- ± .010 2 PLACES ± 0.25 ± .014 1 PLACE ± 0.35 ± ---	APPROVED BY J DENNEHY	DATE 2005/03/11	MATERIAL NO. DOCUMENT NO. SEE CHART SDAE-6410-N		
		ANGULAR ± .5 °	DRAFT WHERE APPLICABLE MUST REMAIN WITHIN DIMENSIONS		SIZE A2 THIS DRAWING CONTAINS INFORMATION THAT IS PROPRIETARY TO MOLEX INCORPORATED AND SHOULD NOT BE USED WITHOUT WRITTEN PERMISSION		

ENG. NO.	AE-6410-NA (501)	AE-6410-NA (516)	AE-6410-NK (516)	AE-6410-NC (501)	AE-6410-NA (509)	AE-6410-NS (501)	AE-6410-NA (503)		
DIMN. "D"	(7.50 ±0.25) .295 ±.010	(7.50 ±0.25) .295 ±.010	(9.22) REF .363	(7.14 ±0.25) .281 ±.010	(7.50 ±0.25) .295 ±.010	(7.50 ±0.25) .295 ±.010	(7.50 ±0.25) .295 ±.010		
DIMN. "C"	(14.22) / .560	(14.22) / .560	(15.88) / .625	(20.32) / .800	(14.22) / .560	(16.51) / .649	(14.22) / .560		
DIMN. "F"	(3.56) / .140 REF	(3.56) / .140 REF	(3.48 ±0.25) .137 ±.010	(10.00) / .394 REF	(3.56) / .140 REF	(5.84) / .230 REF	(3.56) / .140 REF		
PLATING	GOLD MIN. (0.0005)/.000020 OVER (0.00076)/.000030 NICKEL MIN.	GOLD MIN. (0.00025)/.000010 OVER (0.00076)/.000030 NICKEL MIN.	GOLD MIN. (0.00025)/.000010 OVER (0.00076)/.000030 NICKEL MIN.	GOLD MIN. (0.00051)/.000020 OVER (0.00076)/.000030 NICKEL MIN.	GOLD MIN. (0.00127)/.000050 OVER (0.00076)/.000030 NICKEL MIN.	GOLD MIN. (0.00051)/.000020 OVER (0.00076)/.000030 NICKEL MIN.	GOLD MIN. (0.00076)/.000030 OVER (0.00127)/.000050 NICKEL MIN.		
NO. OF CIRCUITS	2	AE-6410-2A(501) 22-29-2021	AE-6410-2A(516) 22-29-2022	AE-6410-2K(516) 38-00-0932	AE-6410-2C(501) NOT TOOLED	AE-6410-2A(509) 38-00-7250	NOT TOOLED	AE-6410-2A(503) 38-00-7062	
	3	3 A(501) 2031	3 A(516) 2032	3 K(516) 0933	3 C(501) 38-00-5909	3 A(509) NOT TOOLED	NOT TOOLED	3 A(503) 7063	
	4	4 A(501) 2041	4 A(516) 2042	4 K(516) 0934	4 C(501) NOT TOOLED	4 A(509) 38-00-7251	AE-6410-2S(509) 38-00-7666	4 A 7064	
	5	5 A(501) 2051	5 A(516) 2052	5 K(516) 0935	5 C(501) ↑	5 A(509) NOT TOOLED		5 A 7065	
	6	6 A(501) 2061	6 A(516) 2062	6 K(516) 0936	6 C(501)	6 A(509) ↑	6 S(501) 38-00-7667	6 A 7066	
	7	7 A(501) 2071	7 A(516) 2072	7 K(516) 0937	7 C(501)	7 A(509)	NOT TOOLED	7 A 7067	
	8	8 A(501) 2081	8 A(516) 2082	8 K(516) 0938	8 C(501)	8 A(509)	↑	8 A 38-00-7068	
	9	9 A(501) 2091	9 A(516) 2092	9 K(516) 0939	9 C(501)	9 A(509)		9 A NOT TOOLED	
	10	10 A(501) 2101	10 A(516) 2102	10 K(516) 0940	10 C(501)	10 A(509)		10 A NOT TOOLED	
	11	11 A(501) 2111	11 A(516) 2112	11 K(516) 0941	11 C(501)	11 A(509)		11 A NOT TOOLED	
	12	12 A(501) 2121	12 A(516) 2122	12 K(516) 0942	12 C(501)	12 A(509)		12 A 38-00-7072	
	13	13 A(501) 2131	13 A(516) 2132	13 K(516) 0943	13 C(501)	13 A(509)		13 A NOT TOOLED	
	14	14 A(501) 2141	14 A(516) 2142	14 K(516) 0944	14 C(501)	14 A(509)		14 A 38-00-7074	
	15	15 A(501) 2151	15 A(516) 2152	15 K(516) 0945	15 C(501)	15 A(509)		15 A NOT TOOLED	
	16	16 A(501) 2161	16 A(516) 2162	16 K(516) 0946	16 C(501)	16 A(509)		16 A ↑	
	17	17 A(501) 2171	17 A(516) 2172	17 K(516) 0947	17 C(501)	17 A(509)		17 A	
	18	18 A(501) 2181	18 A(516) 2182	18 K(516) 0948	18 C(501)	18 A(509)		18 A ↓	
	19	19 A(501) 2191	19 A(516) 2192	19 K(516) 0949	19 C(501)	19 A(509)		19 A NOT TOOLED	
	20	20 A(501) 2201	20 A(516) 2202	20 K(516) 0950	20 C(501)	20 A(509)		20 A 38-00-7080	
	21	21 A(501) 2211	21 A(516) 2212	21 K(516) 0951	21 C(501)	21 A(509)		21 A NOT TOOLED	
	22	22 A(501) 2221	22 A(516) 2222	22 K(516) 0952	22 C(501)	22 A(509)		22 A NOT TOOLED	
	23	23 A(501) 2231	23 A(516) 2232	23 K(516) 0953	23 C(501)	23 A(509)		23 A NOT TOOLED	
	24	24 A(501) 2241	24 A(516) 2242	24 K(516) 0954	24 C(501)	24 A(509)		24 A 38-00-0441	
	25	25 A(501) 2251	25 A(516) 2252	25 K(516) 0955	25 C(501)	25 A(509)		25 A NOT TOOLED	
	26	26 A(501) 2261	26 A(516) 2262	26 K(516) 0956	26 C(501)	26 A(509)		26 A ↓	
	27	27 A(501) 2271	27 A(516) 2272	27 K(516) 0957	27 C(501) ↓	27 A(509) ↓		27 A(503) ↓	
	28	AE-6410-28A(501) 22-29-2281	AE-6410-28A(516) 22-29-2282	AE-6410-28K(516) 38-00-0958	AE-6410-28C(501) NOT TOOLED	AE-6410-28A(509) NOT TOOLED		NOT TOOLED	AE-6410-28A(503) NOT TOOLED

SEE SHEET 1 EC NO: E2009-0413 DRAWN: BMAGUIRE 2009/02/24 CHKD: 2009/02/24 APPR: BMAGUIRE 2009/02/24	QUALITY SYMBOLS 	GENERAL TOLERANCES (UNLESS SPECIFIED)		DIMENSION STYLE MM/IN		SCALE 4:1	DESIGN UNITS METRIC	THIRD ANGLE PROJECTION
		4 PLACES ± --- ± --- 3 PLACES ± --- ± .010 2 PLACES ± 0.25 ± .014 1 PLACE ± 0.35 ± --- ANGULAR ± .5 °	mm INCH	DRAWN BY T. MAHON	DATE 28/01/03	TITLE WAFER, FRICTION LOCK KK (2.54)/.100 FOR (0.64)/.025 SQ. PINS		
		DRAFT WHERE APPLICABLE MUST REMAIN WITHIN DIMENSIONS		CHECKED BY BMAGUIRE	DATE 28/01/03	MOLEX INCORPORATED		
		SEE CHART		APPROVED BY JDENNEHY	DATE 2005/03/11	MATERIAL NO. SDAE-6410-N	DOCUMENT NO. 3 OF 4	

VOIDED OPTION

PART No.	ENG No.	CKT SIZE	VOID LOCATION	DIM A	DIM B	DIM D
38-00-7222	A-6410-3A-2	3	2	(5.08 ±0.10) / .200 ±.004	(7.62) / .300	(7.50) / .295
4749	-4A-3	4	3	(7.62 ±0.13) / .300 ±.005	(10.16) / .400	(7.50) / .295
0611	-5A-3	5	3	(10.16 ±0.13) / .400 ±.005	(12.70) / .500	(7.50) / .295
0089	-6A-3	6	3	(12.70 ±0.13) / .500 ±.005	(15.24) / .600	(7.50) / .295
0090	-6A-51	6	3,4,5	(12.70 ±0.13) / .500 ±.005	(15.24) / .600	(7.50) / .295
5370	-15A-02	15	2	(35.56 ±0.13) / 1.400 ±.005	(38.10) / 1.500	(7.50) / .295
5371	-19A-12	19	12	(45.72 ±0.15) / 1.800 ±.006	(48.26) / 1.900	(7.50) / .295
7688	-12A-09	12	9	(27.94 ±0.13) / 1.100 ±.005	(30.48) / 1.200	(7.50) / .295

ADD VOIDED OPTION EC NO: E2009-0413 2009/02/24 DRWN: BMAGUIRE 2009/02/24 CHKD: 2009/02/24 APPR: BMAGUIRE 2009/02/24 REV BB	QUALITY SYMBOLS ▽=0 ◻=0	GENERAL TOLERANCES (UNLESS SPECIFIED) <table style="width: 100%; border-collapse: collapse;"> <tr> <td></td> <td style="text-align: center;">mm</td> <td style="text-align: center;">INCH</td> </tr> <tr> <td>4 PLACES</td> <td style="text-align: center;">± ---</td> <td style="text-align: center;">± ---</td> </tr> <tr> <td>3 PLACES</td> <td style="text-align: center;">± ---</td> <td style="text-align: center;">± .010</td> </tr> <tr> <td>2 PLACES</td> <td style="text-align: center;">± 0.25</td> <td style="text-align: center;">± .014</td> </tr> <tr> <td>1 PLACE</td> <td style="text-align: center;">± 0.35</td> <td style="text-align: center;">± ---</td> </tr> </table>		mm	INCH	4 PLACES	± ---	± ---	3 PLACES	± ---	± .010	2 PLACES	± 0.25	± .014	1 PLACE	± 0.35	± ---	DIMENSION STYLE MM/IN DRAWN BY: T. MAHON DATE: 28/01/03 CHECKED BY: BMAGUIRE DATE: 28/01/03 APPROVED BY: JDENNEHY DATE: 2005/03/11 MATERIAL NO.	SCALE 4:1	DESIGN UNITS METRIC	THIRD ANGLE PROJECTION 	TITLE WAFER, FRICTION LOCK KK (2.54) / .100 FOR (0.64) / .025 SQ. PINS
		mm	INCH																			
	4 PLACES	± ---	± ---																			
	3 PLACES	± ---	± .010																			
2 PLACES	± 0.25	± .014																				
1 PLACE	± 0.35	± ---																				
DRAFT WHERE APPLICABLE MUST REMAIN WITHIN DIMENSIONS		SEE TABLE		MOLEX INCORPORATED DOCUMENT NO.		SHEET NO. 4 OF 4																
SIZE A3		THIS DRAWING CONTAINS INFORMATION THAT IS PROPRIETARY TO MOLEX INCORPORATED AND SHOULD NOT BE USED WITHOUT WRITTEN PERMISSION																				
SDAE-6410-N		SDAE-6410-N																				