

PLEASE CHECK WWW.MOLEX.COM FOR LATEST PART INFORMATION

Part Number: [0917773105](#)
Status: **Active**
Overview: [rast 5 connector system](#)
Description: 5.00mm (.197") Appli-Mate RAST 5 IDT Housing, Direct/Indirect, Female, 10A, 1 Circuit, Position Keys A

Documents:

[3D Model](#) [Product Specification PS-99020-0037 \(PDF\)](#)
[Drawing \(PDF\)](#) [RoHS Certificate of Compliance \(PDF\)](#)
[Packaging Specification \(PDF\)](#)

Agency Certification

CSA LR19980
 UL E29179

General

Product Family IDT and Solder Connectors
 Series [91777](#)
 Crimp Quality Equipment Yes
 Overview [rast 5 connector system](#)
 Product Name RAST 5
 Use With RAST standard interface

Physical

Circuits (Loaded) 1
 Circuits (maximum) 1
 Color - Resin Natural (White)
 Durability (mating cycles max) 10
 Flammability 94V-2
 Gender Female
 Glow-Wire Compliant Yes
 Lock to Mating Part Yes
 Material - Metal Phosphor Bronze
 Material - Plating Mating Silver
 Material - Plating Termination Silver
 Material - Resin Nylon
 Number of Rows 1
 Packaging Type Tray
 Panel Mount No
 Pitch - Mating Interface (in) 0.197 In
 Pitch - Mating Interface (mm) 5.00 mm
 Pitch - Term. Interface (in) 0.197 In
 Pitch - Term. Interface (mm) 5.00 mm
 Polarized to Mating Part Yes
 Stackable No
 Temperature Range - Operating -40°C to +120°C
 Termination Interface: Style IDT or Pierce
 Wire Size AWG 22, 24

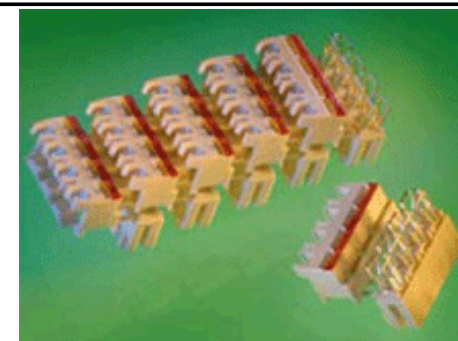
Electrical

Current - Maximum per Contact 10A
 Voltage - Maximum 250V AC

Material Info

Reference - Drawing Numbers

Application Specification AS-99033-0004



Series

image - Reference only

EU RoHS

ELV and RoHS Compliant

REACH SVHC

Not Reviewed

Halogen-Free

Status

Not Reviewed

Need more information on product environmental compliance?

Email productcompliance@molex.com
 For a multiple part number RoHS Certificate of Compliance, [click here](#)

Please visit the [Contact Us](#) section for any non-product compliance questions.

China RoHS



Search Parts in this Series

[91777Series](#)

Mates With

Appli-Mate RAST 5.0 Header [90858](#) , [90879](#)

Application Tooling | FAQ

Tooling specifications and manuals are found by selecting the products below. Crimp Height Specifications are then contained in the Application Tooling Specification document.

Global

Description	Product #
RAST 5.0 Semi-Automatic Terminator Machine for Appli-Mate™ Connector 6 and 10 AMP	0623006300

This document was generated on 05/28/2010

PLEASE CHECK WWW.MOLEX.COM FOR LATEST PART INFORMATION

10 9 8 7 6 5 4 3 2 1

F

E

D

C

B

A

F

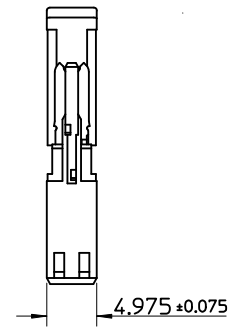
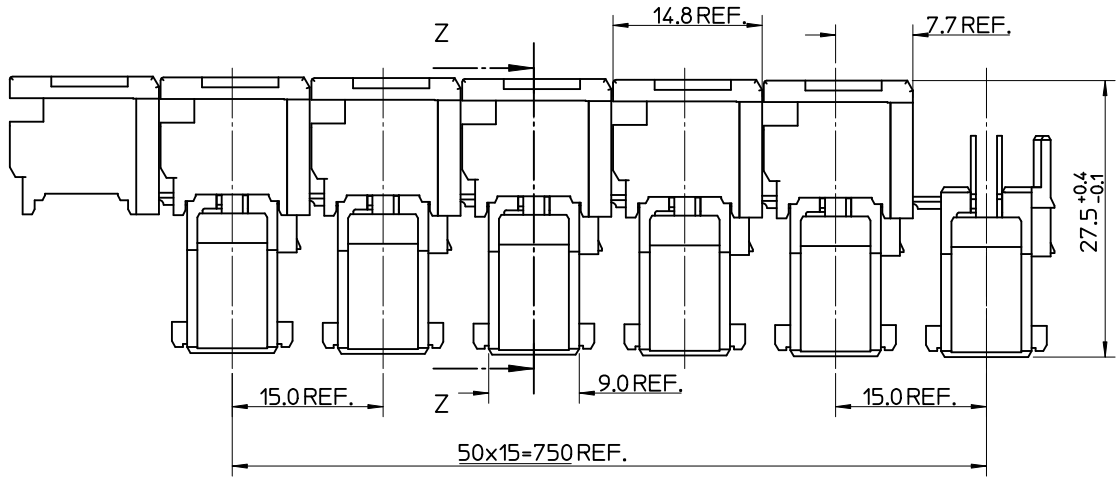
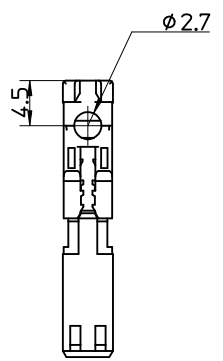
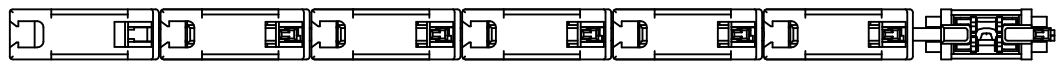
E

D

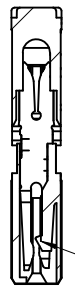
C

B

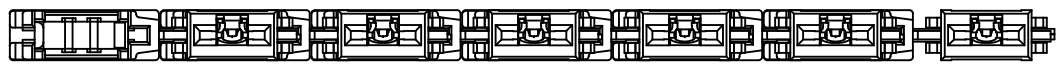
A



Z-Z



LOCKING TAB



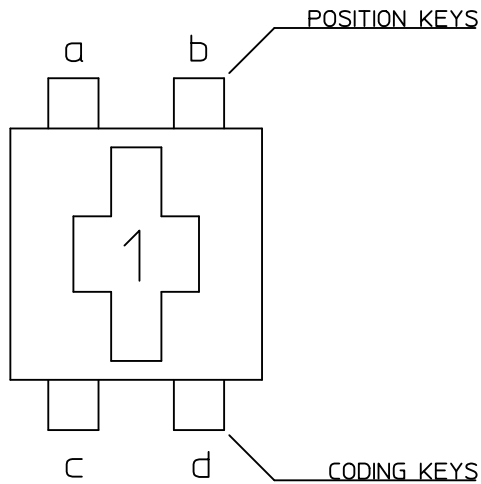
NOTES:

1. MATERIALS:
 HOUSING: PA6 UL94 V-2
 TERMINAL: COPPER ALLOY, 0.5 REF THICK
 PLATING: OPTION 1: 5um MIN PURE Sn ALL OVER
 OPTION 2: 2um MIN SILVER IN CONTACT AREA
 0.05um MIN SILVER FLASH ALLOVER
2. PRODUCT CONFORMS TO SPECIFICATION PS-99020-0037
3. PACKAGING SPECIFICATION SEE SPEC PK-90833-001
4. REFER TO APPLICATION SPECIFICATION AS-99033-0004

changed plating spec EC NO: E2010-0213 DRWN: BRITTLE 2010/01/08 CHKD: T. TOURISH 2010/01/19 APPR: BMAGUIRE 2010/01/19	QUALITY SYMBOLS	GENERAL TOLERANCES (UNLESS SPECIFIED)		DIMENSION STYLE MM ONLY		SCALE 2:1	DESIGN UNITS METRIC	THIRD ANGLE PROJECTION	
	▼=0 ▽=0	4 PLACES ± --- ± --- 3 PLACES ± --- ± --- 2 PLACES ± 0.05 ± --- 1 PLACE ± 0.10 ± ---	mm INCH ± --- ± --- ± 0.05 ± --- ± 0.10 ± ---	DRAWN BY GMC SWEEN	DATE 2004/10/12	TITLE 5MM APPLI-MATE 1CKT 10A FEMALE CONNECTOR			
		ANGULAR ± 2 °		CHECKED BY BMAGUIRE	DATE 2005/01/07	MOLEX INCORPORATED			
		DRAFT WHERE APPLICABLE MUST REMAIN WITHIN DIMENSIONS		APPROVED BY BMAGUIRE	DATE 2005/01/07	MATERIAL NO. SEE SHEET 2	DOCUMENT NO. SD-91777-001	SHEET NO. 1 OF 2	

9 8 7 6 5 4 3 2 1

MOLEX PART NUMBER	TERMINAL (see note1 sheet1)	COLOUR	POSITION KEYS	CODING KEYS	CONFIGURATION	REF.
91777-0102	OPTION 1 (TIN)	NATURAL	b	c d		K02
91777-3102	OPTION 2 (SILVER)					
91777-0103	OPTION 1 (TIN)	NATURAL	NONE	NONE		K**
91777-3103	OPTION 2 (SILVER)					
91777-0104	OPTION 1 (TIN)	NATURAL	NONE	c		K11
91777-3104	OPTION 2 (SILVER)					
91777-0105	OPTION 1 (TIN)	NATURAL	a	c		K09
91777-3105	OPTION 2 (SILVER)					
91777-0106	OPTION 1 (TIN)	NATURAL	a, b	c, d		K00
91777-3106	OPTION 2 (SILVER)					
91777-0107	OPTION 1 (TIN)	BLACK	a, b	d		K01
91777-3107	OPTION 2 (SILVER)					



POSITION & CODING KEYS IDENTIFICATION

SEE SHEET 1 EC NO: E2010-0213 DRWN:BRUTTE 2010/01/08 CHKD:T. TOURISH 2010/01/19 APPR:BMAGUIRE 2010/01/19	DESCRIPTION REV	QUALITY SYMBOLS	GENERAL TOLERANCES (UNLESS SPECIFIED)	DIMENSION STYLE	SCALE	DESIGN UNITS	THIRD ANGLE PROJECTION
		=0 =0	mm INCH 4 PLACES ± --- ± --- 3 PLACES ± --- ± --- 2 PLACES ± 0.05 ± --- 1 PLACE ± 0.10 ± --- ANGULAR ± 2 °	MM ONLY	2:1	METRIC	
		DRAWN BY: GMC SWEEN DATE: 2004/10/12 CHECKED BY: DATE: APPROVED BY: DATE: 2005/01/07 MATERIAL NO.	TITLE 5MM APPLI-MATE 1CKT 10A FEMALE CONNECTOR				
		DRAFT WHERE APPLICABLE MUST REMAIN WITHIN DIMENSIONS	SEE CHART	MOLEX INCORPORATED DOCUMENT NO. SD-91777-001 SHEET NO. 2 OF 2			