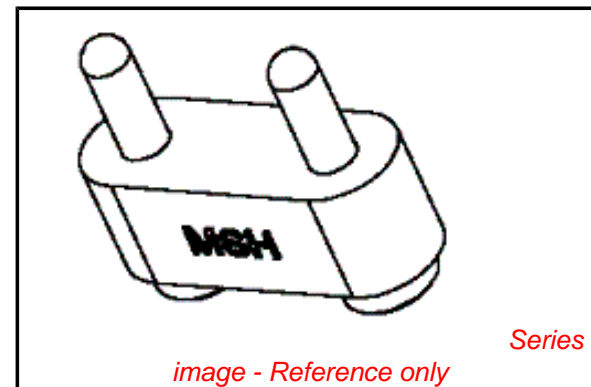


PLEASE CHECK WWW.MOLEX.COM FOR LATEST PART INFORMATION

Part Number: [0679040001](#)
Status: **Active**
Overview: [pogo_pins](#)
Description: 4.00mm (.157") Pitch Pogo Pin Connector Header, SMT, Vertical, 2 Circuits
Replacement Part Number: [67904-0011](#) [67904-0111](#)

Documents:

[3D Model](#) [Product Specification PS-67904-001 \(PDF\)](#)
[Drawing \(PDF\)](#) [RoHS Certificate of Compliance \(PDF\)](#)



General

Product Family	PCB Headers
Series	67904
Application	Board-to-Board
Comments	Action Height: 4.00mm (.157")
Obsolete Date	2005/12/01
Overview	pogo_pins
Product Name	PoGo Pin
Replacement Part Number	67904-0011
Replacement Part Number	67904-0111

Physical

Breakaway	No
Circuits (Loaded)	2
Circuits (maximum)	2
Durability (mating cycles max)	10,000
First Mate / Last Break	No
Glow-Wire Compliant	No
Guide to Mating Part	No
Keying to Mating Part	None
Lock to Mating Part	None
Mated Height (in)	0.157 In
Mated Height (mm)	4.00 mm
Material - Plating Mating	Gold
Material - Plating Termination	Gold
Number of Rows	1
Orientation	Vertical
PCB Locator	No
PCB Retention	Yes
Packaging Type	Embossed Tape on Reel
Pitch - Mating Interface (in)	0.157 In
Pitch - Mating Interface (mm)	4.00 mm
Pitch - Term. Interface (in)	0.157 In
Pitch - Term. Interface (mm)	4.00 mm
Plating min: Mating (µin)	12
Plating min: Mating (µm)	0.30
Plating min: Termination (µin)	5
Plating min: Termination (µm)	0.13
Polarized to Mating Part	No
Polarized to PCB	No
Shrouded	No
Stackable	No
Temperature Range - Operating	-40°C to +85°C
Termination Interface: Style	Surface Mount

EU RoHS

ELV and RoHS Compliant
REACH SVHC
 Not Reviewed
Halogen-Free Status
 Not Reviewed

China RoHS



Need more information on product environmental compliance?

Email productcompliance@molex.com
 For a multiple part number RoHS Certificate of Compliance, [click here](#)

Please visit the [Contact Us](#) section for any non-product compliance questions.

Search Parts in this Series
[67904Series](#)

Electrical

Current - Maximum per Contact 2A
Voltage - Maximum 12V DC

Solder Process Data

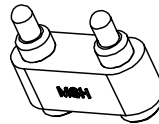
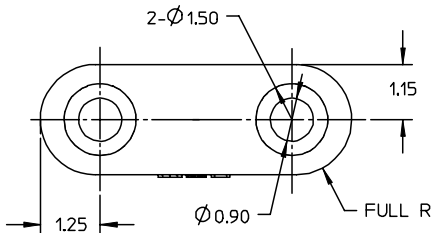
Lead-free Process Capability Reflow Capable (SMT only)
Process Temperature max. C 250

Material Info**Reference - Drawing Numbers**

Packaging Specification PK-67904-001
Product Specification PS-67904-001
Sales Drawing SD-67904-001

This document was generated on 05/25/2010

PLEASE CHECK WWW.MOLEX.COM FOR LATEST PART INFORMATION



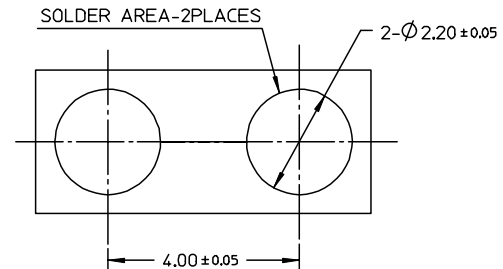
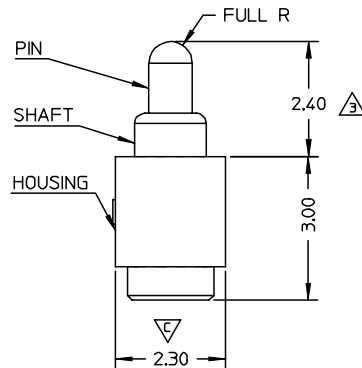
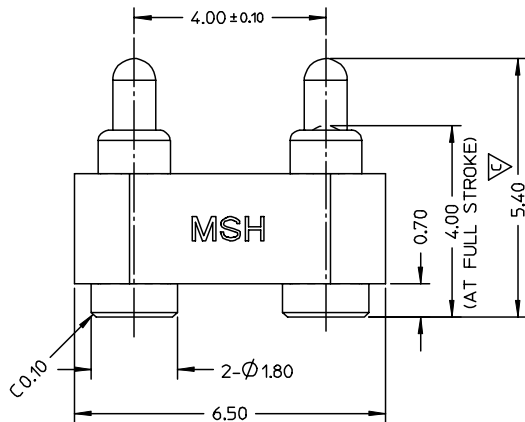
NOTES:

- 1 MATERIAL:
PIN: COPPER ALLOY
SHAFT: COPPER ALLOY
SPRING: SWP-B, PIANO WIRE OR EQUIVALENT (INSIDE THE SHAFT)
HOUSING: NYLON 46 UL 94-V0, BLACK

- 2 FINISH:
PIN: OVERALL 4µ MIN. HARD GOLD OVER 50~100µ NICKEL
SHAFT: OVERALL 4µ MIN. HARD GOLD OVER 50~100µ NICKEL
SPRING: OVERALL 4µ MIN. HARD GOLD OVER 50~100µ NICKEL

⚠ AFTER 10,000 CYCLES

4 PRODUCT SPECIFICATION: PS-67904-001



RECOMMEND PCB LAYOUT
COMPONENT SIDE

ADD TWO CRITICAL DIMENSIONS EC NO: SH2003-0080 DRWN: XIXU 2003/09/12 CHKD: JLU 2003/09/12 APPR: SHUANG 2003/09/12	DESCRIPTION ▽ - 0 ▽ - 2	QUALITY SYMBOLS		GENERAL TOLERANCES (UNLESS SPECIFIED)		SCALE 10:1	DESIGN UNITS METRIC	THIRD ANGLE PROJECTION	REVISE ON CAD ONLY		
						DIMENSION STYLE MM ONLY		TITLE 2 PINS POGO CONNECTOR W/O PICK AND PLACE CAP			
						4 PLACES ± --- ± --- 3 PLACES ± --- ± --- 2 PLACES ± 0.15 ± --- 1 PLACE ± --- ± ---	DRAWN BY XU XIANG	DATE 2003-07-24	MOLEX INCORPORATED		
						ANGULAR ±1/2°	CHECKED BY JLU	DATE 2003-07-24	MATERIAL NO. 679040001	DOCUMENT NO. SD-67904-001	SHEET NO. 1 OF 1
				DRAFT WHERE APPLICABLE MUST REMAIN WITHIN DIMENSIONS	THIS DRAWING CONTAINS INFORMATION THAT IS PROPRIETARY TO MOLEX INCORPORATED AND SHOULD NOT BE USED WITHOUT WRITTEN PERMISSION						