

PLEASE CHECK WWW.MOLEX.COM FOR LATEST PART INFORMATION

Part Number: [0010011064](#)
Status: **Active**
Overview: [kk](#)
Description: 5.08mm (.200") Pitch KK® Crimp Terminal Housing, 6 Circuits

Documents:

[3D Model](#) [Product Specification PS-99020-0087 \(PDF\)](#)
[Drawing \(PDF\)](#) [RoHS Certificate of Compliance \(PDF\)](#)

Agency Certification

CSA LR19980
 UL E29179

General

Product Family Crimp Housings
 Series [3001](#)
 Overview [kk](#)
 Product Name KK®

Physical

Circuits (maximum) 6
 Color - Resin Natural
 Flammability 94V-2
 Gender Female
 Glow-Wire Compliant No
 Material - Resin Nylon
 Number of Rows 1
 Packaging Type Bag
 Panel Mount No
 Pitch - Mating Interface (in) 0.200 In
 Pitch - Mating Interface (mm) 5.08 mm
 Temperature Range - Operating -40°C to +105°C

Solder Process Data

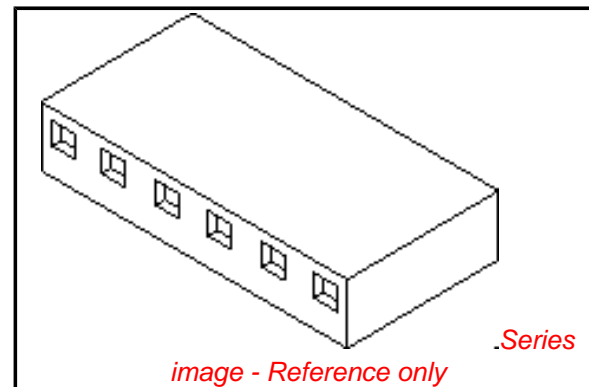
Lead-free Process Capability Wave Capable (TH only)

Material Info

Old Part Number 3001-06

Reference - Drawing Numbers

Product Specification PS-99020-0087
 Sales Drawing SDE-3001-N*



EU RoHS

ELV and RoHS Compliant
REACH SVHC
 Not Reviewed
Halogen-Free Status

China RoHS



Need more information on product environmental compliance?

Email productcompliance@molex.com
 For a multiple part number RoHS Certificate of Compliance, [click here](#)

Please visit the [Contact Us](#) section for any non-product compliance questions.

Search Parts in this Series

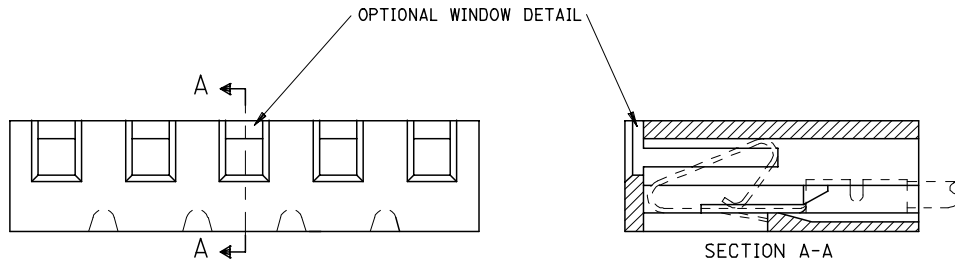
[3001Series](#)

Mates With

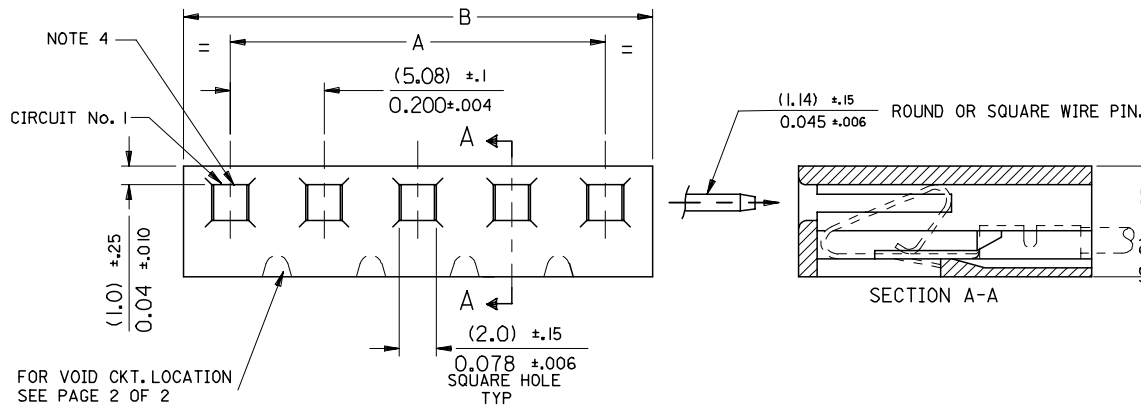
[3061](#) , [3003](#) , [3008](#)

Use With

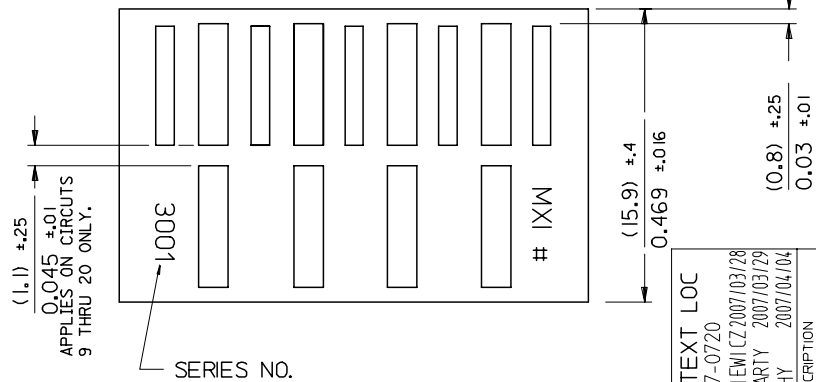
[2478](#) Crimp Terminals for 18-24 AWG, [2578](#) Crimp Terminals for 22-26 AWG, [2878](#)



NOTE :
 1. DIMENSIONS SHOWN MILLIMETERS INCHES
 2. FOR OTHER PRODUCT SPEC'S. SEE PSX 10-39.
 3. THIS HOUSING USES KK TERM. No's. 2478, 2578 & 28



FOR VOID CKT. LOCATION SEE PAGE 2 OF 2



MAT'L: NYLON

CENTER RIB ONLY

10-01-1204	E-3001-20	3.800 ±.012	4.000 ^{+0.006} _{-0.016}	96.52 ±0.3	101.60 ^{+0.3} _{-0.4}
-1194	-19	3.600 ±.012	3.800 ^{+0.006} _{-0.016}	91.44 ±0.3	96.52 ^{+0.3} _{-0.4}
-1184	-18	3.400 ±.012	3.600 ^{+0.006} _{-0.016}	86.36 ±0.3	91.44 ^{+0.3} _{-0.4}
-1174	-17	3.200 ±.012	3.400 ^{+0.006} _{-0.016}	81.28 ±0.3	86.36 ^{+0.3} _{-0.4}
-1164	-16	3.000 ±.010	3.200 ^{+0.006} _{-0.016}	76.20 ±0.25	81.28 ^{+0.3} _{-0.4}
-1154	-15	2.800 ±.010	3.000 ^{+0.006} _{-0.016}	71.12 ±0.25	76.20 ^{+0.3} _{-0.4}
-1144	-14	2.600 ±.010	2.800 ^{+0.006} _{-0.016}	66.04 ±0.25	71.12 ^{+0.3} _{-0.4}
-1134	-13	2.400 ±.010	2.600 ^{+0.006} _{-0.016}	60.96 ±0.25	66.04 ^{+0.3} _{-0.4}
-1124	-12	2.200 ±.010	2.400 ^{+0.006} _{-0.016}	55.88 ±0.25	60.96 ^{+0.3} _{-0.4}
-1114	-11	2.000 ±.008	2.200 ^{+0.006} _{-0.012}	50.80 ±0.20	55.88 ^{+0.3} _{-0.4}
-1104	-10	1.800 ±.008	2.000 ^{+0.006} _{-0.008}	45.72 ±0.20	50.80 ^{+0.3} _{-0.4}
-1094	-9	1.600 ±.008	1.800 ^{+0.006} _{-0.008}	40.64 ±0.20	45.72 ^{+0.3} _{-0.4}
-1084	-8	1.400 ±.008	1.600 ^{+0.006} _{-0.008}	35.56 ±0.20	40.64 ^{+0.3} _{-0.4}
-1074	-7	1.200 ±.008	1.400 ^{+0.006} _{-0.008}	30.48 ±0.20	35.56 ^{+0.3} _{-0.4}
-1064	-6	1.000 ±.004	1.200 ^{+0.006} _{-0.008}	25.40 ±0.10	30.48 ^{+0.3} _{-0.4}
-1054	-5	.800 ±.004	1.000 ^{+0.006} _{-0.006}	20.32 ±0.10	25.40 ^{+0.3} _{-0.4}
-1044	-4	.600 ±.004	.800 ^{+0.006} _{-0.006}	15.24 ±0.10	20.32 ^{+0.3} _{-0.4}
-1034	-3	.400 ±.004	.600 ^{+0.006} _{-0.006}	10.16 ±0.10	15.24 ^{+0.3} _{-0.4}
-1024	-2	.200 ±.004	.400 ^{+0.006} _{-0.006}	5.08 ±0.10	10.16 ^{+0.3} _{-0.4}
10-01-1014	E-3001-1		.200 ^{+0.006} _{-0.006}		5.08 ^{+0.3} _{-0.4}
PART No.	ENG. No.	ENGLISH		METRIC	
		A	B	A	B

CORRECT TEXT LOC
 EC NO: E2007-0720
 DRWN: DWASZKI EMI CZ 2007/03/28
 CHKD: D. MOR ARTY 2007/03/29
 APPR: DENNEHY 2007/04/04

QUALITY SYMBOLS
 ▽=0
 ▽=0

GENERAL TOLERANCES (UNLESS SPECIFIED)

	mm	INCH
4 PLACES	±.005	±.0002
3 PLACES	±.005	±.010
2 PLACES	±0.25	±.014
1 PLACE	±0.35	±.014

ANGULAR ±1/2°

DRAFT WHERE APPLICABLE MUST REMAIN WITHIN DIMENSIONS

DIMENSION STYLE
 MM/IN

SCALE
 7:1

DESIGN UNITS
 METRIC

THIRD ANGLE PROJECTION

DRAWN BY P. MOORE DATE 1998/09/15
 CHECKED BY MGOONEY DATE 1999/03/12
 APPROVED BY MWILHITE DATE 1999/03/12

TITLE
 5.08MM KK CRP TERM HSG

MATERIAL NO. SEE CHART
 DOCUMENT NO. SDE-3001-N-*
 SHEET NO. 1 OF 1

THIS DRAWING CONTAINS INFORMATION THAT IS PROPRIETARY TO MOLEX INCORPORATED AND SHOULD NOT BE USED WITHOUT WRITTEN PERMISSION

PART NO. SEE CHART
 DWG. NO. SDE-3001-N*

FOR MANUFACTURE IN SINGAPORE ONLY

FOR DIMENSIONS SEE SHEET No.1

11	97-00-0919	E-3001-12-11	12
2	NOT TOOLED	E-3001-7-2	7
3	I 10-01-1080	-8-3	8
5	I -3085	-8-5	8
4	I -3044	-4-4	4
3	I -1030	-3-3	3
2	-1049	-4-2	4
2	-1109	-10-2	10
2	-1099	-9-2	9
5	10-01-1069	E-3001-6-5	6
VOID CKT. LOCATION	PART No.	ENG. No.	NO OF CKTS.

REDRAWN ON CAD EC NO. E90109 DRWN: P. MOORE 98/09/19 CHK: / / / / APPR: / / / / K	DESCRIPTION REV	QUALITY SYMBOLS MAJOR = CRITICAL = C =	GENERAL TOLERANCES: (UNLESS SPECIFIED)		SCALE : <input type="checkbox"/> mm <input type="checkbox"/> INCH	DESIGN UNITS <input type="checkbox"/> mm <input type="checkbox"/> INCH	THIRD ANGLE PROJECTION <input checked="" type="checkbox"/> mm <input type="checkbox"/> INCH <input type="checkbox"/> mm ONLY	DIMENSIONS: <input checked="" type="checkbox"/> mm <input type="checkbox"/> INCH <input type="checkbox"/> mm ONLY	SHT REV	REVISIONS ON CAD ONLY	
		4 PLACES ±0. ±.	mm INCH	DRAWN BY & DATE P. MOORE 98/09/19							TITLE: HOUSING, CONNECTOR, KK (5.08)/.200 CRIMP STYLE TERM. MOLEX INCORPORATED
		3 PLACES ±0. ±.		CHECKED BY & DATE MGOONEY 12/03/99							
		2 PLACES ±0. ±.		APPROVED BY & DATE MWILHITE 12/03/99							
1 PLACE ±0. ±.		CAD FILENAME PM19.DGN	MATERIAL NO. SEE CHART	DRAWING NO. SDE-3001-N-*	SHEET NO. 2 OF						
ANGULAR: ± 1/2 °						THIS DRAWING CONTAINS INFORMATION THAT IS PROPRIETARY TO MOLEX INCORPORATED AND SHOULD NOT BE USED WITHOUT WRITTEN PERMISSION.					
DRAFT WHERE APPLICABLE MUST REMAIN WITHIN DIMENSIONS						SIZE B					