

**PLEASE CHECK WWW.MOLEX.COM FOR LATEST PART INFORMATION**

**Part Number:** [0357460410](#)  
**Status:** **Active**  
**Overview:** [versablade](#)  
**Description:** Crimp Terminal 35746, 24-26 AWG

**Documents:**

[Drawing \(PDF\)](#) [RoHS Certificate of Compliance \(PDF\)](#)  
[Product Specification PS-35180-003 \(PDF\)](#)

**General**

Product Family	Crimp Terminals
Series	<a href="#">35746</a>
Crimp Quality Equipment	Yes
Overview	<a href="#">versablade</a>
Product Name	VersaBlade™

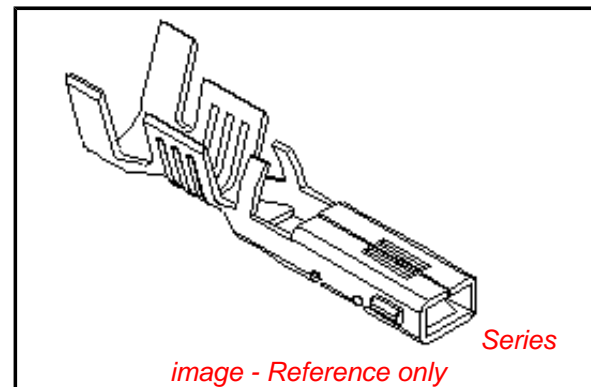
**Physical**

Gender	Female
Material - Metal	Phosphor Bronze
Material - Plating Mating	Tin
Material - Plating Termination	Tin
Packaging Type	Reel
Plating min: Mating (µin)	32.00
Plating min: Mating (µm)	0.800
Plating min: Termination (µin)	32.00
Plating min: Termination (µm)	0.80
Termination Interface: Style	Crimp or Compression
Wire Insulation Diameter	2.70mm (.106") max.
Wire Size AWG	24, 26
Wire Size mm²	N/A

**Material Info**

**Reference - Drawing Numbers**

Product Specification	PS-35180-003, RPS-35180-001
Sales Drawing	SD-35746-001



**EU RoHS**

**ELV and RoHS Compliant**  
**REACH SVHC**  
**Contains SVHC: No**  
**Halogen-Free Status**

**China RoHS**



**Need more information on product environmental compliance?**

Email [productcompliance@molex.com](mailto:productcompliance@molex.com)  
 For a multiple part number RoHS Certificate of Compliance, [click here](#)

Please visit the [Contact Us](#) section for any non-product compliance questions.

**Search Parts in this Series**

[35746Series](#)

**Mates With**

[35745](#)

**Use With**

[35150](#) , [35151](#)

**Application Tooling | FAQ**

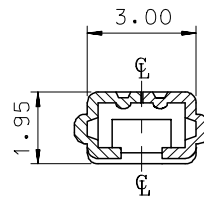
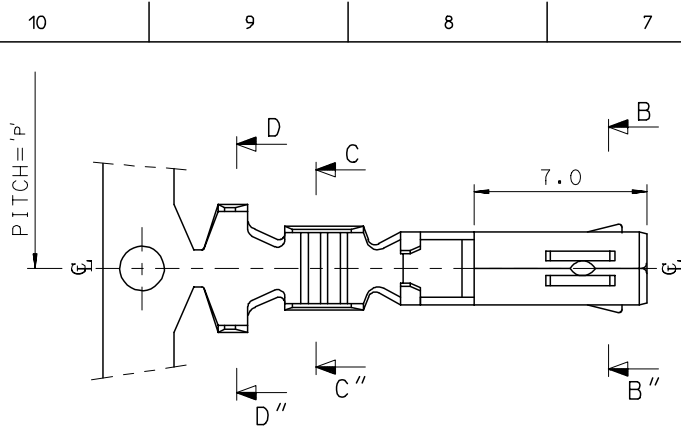
*Tooling specifications and manuals are found by selecting the products below. Crimp Height Specifications are then contained in the Application Tooling Specification document.*

**Global**

Description	Product #
Fine Adjust Applicator for .070 Female Crimp Terminal.	<a href="#">0639014300</a>
T2 Terminator for .070 Female Crimp Terminal	<a href="#">0639114300</a>

This document was generated on 05/27/2010

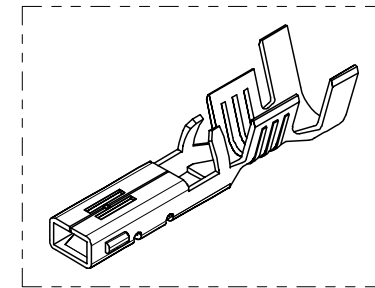
**PLEASE CHECK [WWW.MOLEX.COM](http://WWW.MOLEX.COM) FOR LATEST PART INFORMATION**



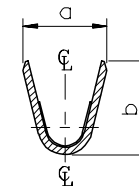
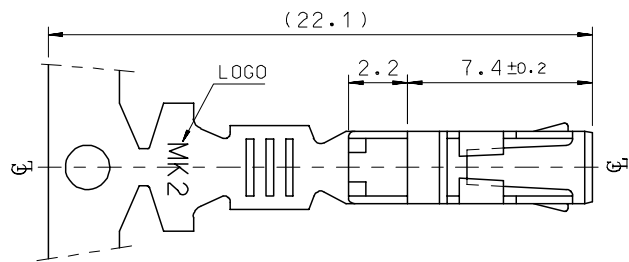
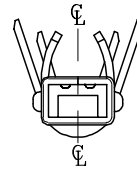
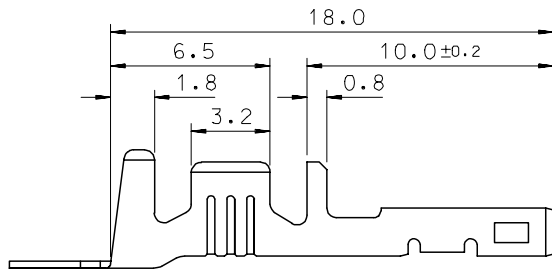
SEC' : B-B''

NOTES

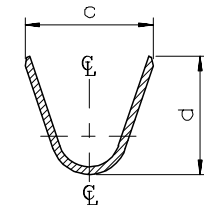
1. MATERIAL : PHOSPHOR BRONZE  
0.3mm THICKNESS
2. FINISH : PRE-PLATED TIN
3. RECOMMENDED LENGTH OF WIRE STRIP IS 4.0-4.8mm.



ISOMETRIC VIEW



SEC' : C-C''



SEC' : D-D''

MATERIAL NO	ENG. No.	AWG	a	b	c	d	PITCH P
357460210	35746-0210	#18-#14	3.4	3.8	5.2	4.8	12.0
357460110	35746-0110	#22-#20	2.85	2.8	4.2	4.0	10.6
357460410	35746-0410	#24	2.2	1.75	3.85	3.5	10.6

REVISED	DESCRIPTION
EC NO: KOR2008-0087	
DRWN: JHPARK01 2007/11/15	
CHKD: WY. YANG 2007/11/15	
APPR: YUNSIKKIM 2007/11/15	

QUALITY SYMBOLS	DESCRIPTION
▽=0	
▽=0	

GENERAL TOLERANCES (UNLESS SPECIFIED)	mm	INCH
4 PLACES	± ---	± ---
3 PLACES	± ---	± ---
2 PLACES	± 0.3	± ---
1 PLACE	± 0.3	± ---
ANGULAR ± 1 °		
DRAFT WHERE APPLICABLE MUST REMAIN WITHIN DIMENSIONS		

DIMENSION STYLE		SCALE	DESIGN UNITS	THIRD ANGLE PROJECTION
MM ONLY		4:1	METRIC	
DRAWN BY	DATE	TITLE		
BK.CH01	1992/11/17	.070 FEMALE TERMINAL (A-TYPE)		
CHECKED BY	DATE			
BK.CH01	1992/11/17			
APPROVED BY	DATE			
CW.LEE	1992/11/17			
MATERIAL NO.	DOCUMENT NO.	SHEET NO.		
		1 OF 01		

MOLEX INCORPORATED	
SD-35746-001	
SEE TABLE	
THIS DRAWING CONTAINS INFORMATION THAT IS PROPRIETARY TO MOLEX INCORPORATED AND SHOULD NOT BE USED WITHOUT WRITTEN PERMISSION	