

**PLEASE CHECK WWW.MOLEX.COM FOR LATEST PART INFORMATION**

**Part Number:** [0038002111](#)  
**Status:** **Active**  
**Overview:** [kk](#)  
**Description:** 2.54mm (.100") KK® IDT Double Cantilever Contact, 21 Circuits, Tin (Sn), Feed-Through, Friction Ramp and Polarizing Rib, Brown ID Strip

**Documents:**

[3D Model](#) [Product Specification PSX-7690S \(PDF\)](#)  
[Drawing \(PDF\)](#) [RoHS Certificate of Compliance \(PDF\)](#)

**Agency Certification**

CSA LR19980

**General**

Product Family IDT and Solder Connectors  
 Series [7720](#)  
 Comments Version J  
 Crimp Quality Equipment Yes  
 Overview [kk](#)  
 Product Name KK®

**Physical**

Circuits (Loaded) 21  
 Circuits (maximum) 21  
 Color - Resin Natural  
 Durability (mating cycles max) 5  
 Flammability 94V-2  
 Gender Female  
 Glow-Wire Compliant No  
 Lock to Mating Part None  
 Material - Metal Brass  
 Material - Plating Mating Tin  
 Material - Plating Termination Tin  
 Material - Resin Nylon  
 Number of Rows 1  
 Packaging Type Bag  
 Pitch - Mating Interface (in) 0.100 In  
 Pitch - Mating Interface (mm) 2.54 mm  
 Pitch - Term. Interface (in) 0.100 In  
 Pitch - Term. Interface (mm) 2.54 mm  
 Polarized to Mating Part Yes  
 Stackable No  
 Temperature Range - Operating 0°C to +75°C  
 Termination Interface: Style IDT or Pierce  
 Wire Size AWG 26 Stranded, 28 Solid, 28 Stranded Topcoat

**Electrical**

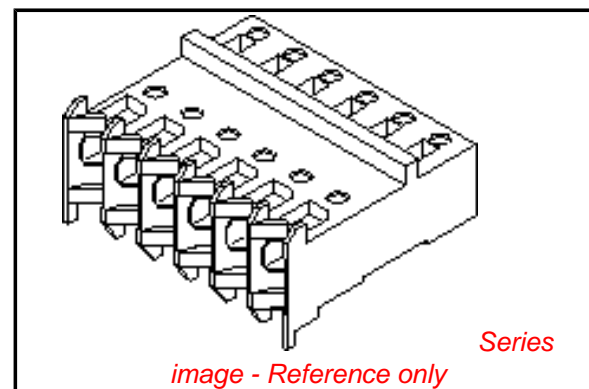
Current - Maximum per Contact 4A  
 Voltage - Maximum 250V

**Material Info**

Old Part Number 7720SC21J

**Reference - Drawing Numbers**

Packaging Specification PK-7720-100  
 Product Specification PSX-7690S  
 Sales Drawing SDA-7720S-\*N\*



**EU RoHS**

**ELV and RoHS  
 Compliant  
 REACH SVHC  
 Not Reviewed  
 Halogen-Free  
 Status  
 Not Reviewed**

**China RoHS**



**Need more information on product environmental compliance?**

Email [productcompliance@molex.com](mailto:productcompliance@molex.com)  
 For a multiple part number RoHS Certificate of Compliance, [click here](#)

Please visit the [Contact Us](#) section for any non-product compliance questions.

**Search Parts in this Series**

[7720Series](#)

**Application Tooling | [FAQ](#)**

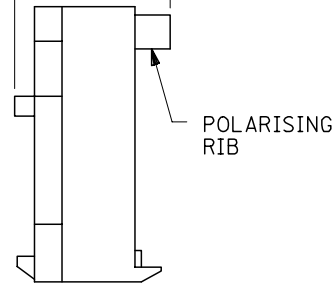
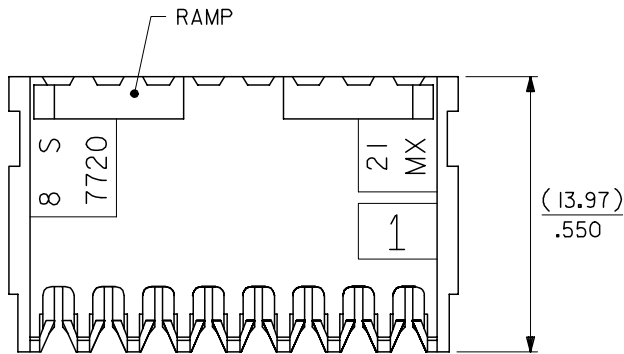
*Tooling specifications and manuals are found by selecting the products below. Crimp Height Specifications are then contained in the Application Tooling Specification document.*

**Global**

Description	Product #
Insertion Tool for 2.54mm (.100") Pitch KK® IDT Crimp Terminals	<a href="#">0638133504</a>
IDT - Semi-automatic	<a href="#">0011200412</a>
- Bench-Top Terminator	

This document was generated on 05/19/2010

**PLEASE CHECK [WWW.MOLEX.COM](http://WWW.MOLEX.COM) FOR LATEST PART INFORMATION**



BASE No. A-7720S- \* N \* - \* VOID LOC' n.  
 TERMINAL DESIGNATION  
 No. OF CCTS.

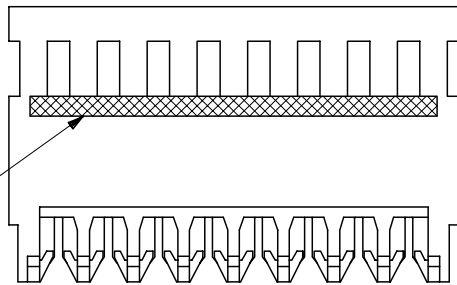
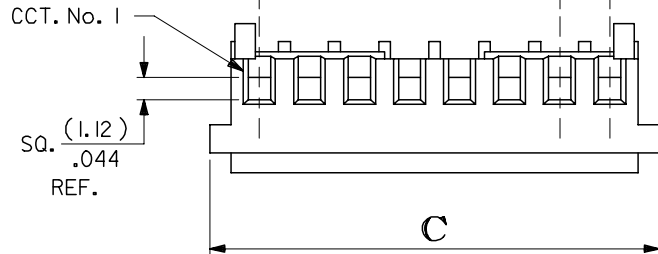
HOUSING CONFIGURATION

- WITHOUT BACKWALL { A. HSG, NO RAMP, NO POL. RIBS  
 B. WITH RAMP  
 C. WITH RAMP AND POL. RIB
- WITH BACKWALL { D. HSG, NO RAMP, NO POL. RIB  
 E. WITH RAMP  
 F. WITH RAMP AND POL. RIB

NOTES:

- MATERIAL: NYLON 6/6, 94V-2, NATURAL.
- THIS ASSY. IS FOR USE WITH (0.64)/.025 SQ. OR RD. PINS. INSERTION DEPTH (6.10-7.87)/.240-.310
- THIS ASSY. WILL ACCOMMODATE (1.42)/.056 MAX. INSULATION DIA.
- COLOURED STRIPE ON FULL LENGTH OF RIB DENOTES WIRE GAUGE (SEE CHART).
- VOIDS ARE AVAILABLE WITH PIN WINDOWS MOULDED CLOSED.
- ALL TERMINALS HAVE CAT-EARS CONFIGURATION EXCEPT WHEN GOLD PLATED.
- FOR STANDARD PARTS SEE SHEETS 2&3.
- FOR NON STANDARD PLATING OPTIONS SEE SHEET 4.

NO OF CCTS	DIMn. A	DIMn. C
2	( 2.54 ) / .100	( 7.59 ) / .299
3	( 5.08 ) / .200	( 10.13 ) / .399
4	( 7.62 ) / .300	( 12.67 ) / .499
5	( 10.16 ) / .400	( 15.21 ) / .599
6	( 12.70 ) / .500	( 17.75 ) / .699
7	( 15.24 ) / .600	( 20.29 ) / .799
8	( 17.78 ) / .700	( 22.83 ) / .899
9	( 20.32 ) / .800	( 25.37 ) / .999
10	( 22.86 ) / .900	( 27.91 ) / 1.099
11	( 25.40 ) / 1.000	( 30.45 ) / 1.199
12	( 27.94 ) / 1.100	( 32.99 ) / 1.299
13	( 30.48 ) / 1.200	( 35.53 ) / 1.399
14	( 33.02 ) / 1.300	( 38.07 ) / 1.499
15	( 35.56 ) / 1.400	( 40.61 ) / 1.599
16	( 38.10 ) / 1.500	( 43.15 ) / 1.699
17	( 40.64 ) / 1.600	( 45.69 ) / 1.799
18	( 43.18 ) / 1.700	( 48.23 ) / 1.899
19	( 45.72 ) / 1.800	( 50.77 ) / 1.999
20	( 48.26 ) / 1.900	( 53.31 ) / 2.099
21	( 50.80 ) / 2.000	( 55.85 ) / 2.199
22	( 53.34 ) / 2.100	( 58.39 ) / 2.299
23	( 55.88 ) / 2.200	( 60.93 ) / 2.399
24	( 58.42 ) / 2.300	( 63.47 ) / 2.499
25	( 60.96 ) / 2.400	( 66.01 ) / 2.599
26	( 63.50 ) / 2.500	( 68.55 ) / 2.699
27	( 66.04 ) / 2.600	( 71.09 ) / 2.799
28	( 68.58 ) / 2.700	( 73.63 ) / 2.899



REVISION UPDATE EC NO: E2007-0125 DRWN: WASZKI, EMI CZ 2006/10/10 CHKD: D. MORIARTY 2006/10/11 APPR: DENNEHY 2006/10/11	QUALITY SYMBOLS	GENERAL TOLERANCES (UNLESS SPECIFIED)	DIMENSION STYLE	SCALE	DESIGN UNITS	THIRD ANGLE PROJECTION																		
	$\nabla = 0$ $\sphericalcap = 0$	<table border="1"> <thead> <tr> <th></th> <th>mm</th> <th>INCH</th> </tr> </thead> <tbody> <tr> <td>4 PLACES</td> <td>± ---</td> <td>± ---</td> </tr> <tr> <td>3 PLACES</td> <td>± ---</td> <td>± .005</td> </tr> <tr> <td>2 PLACES</td> <td>± 0.13</td> <td>± .010</td> </tr> <tr> <td>1 PLACE</td> <td>± 0.25</td> <td>± ---</td> </tr> <tr> <td colspan="3">ANGULAR ± 2 °</td> </tr> </tbody> </table>		mm	INCH	4 PLACES	± ---	± ---	3 PLACES	± ---	± .005	2 PLACES	± 0.13	± .010	1 PLACE	± 0.25	± ---	ANGULAR ± 2 °			MM/IN	4:1	METRIC	
		mm	INCH																					
	4 PLACES	± ---	± ---																					
3 PLACES	± ---	± .005																						
2 PLACES	± 0.13	± .010																						
1 PLACE	± 0.25	± ---																						
ANGULAR ± 2 °																								
DESCRIPTION	DRAWN BY	DATE	TITLE	HOUSING I.D. CONNECTOR (2.54)/.100 CENTRES NON\$																				
REV	GCH	DATE	MOLEX INCORPORATED	SHEET NO. 1 OF 4																				

10 9 8 7 6 5 4 3 2 1

PART NO.	ENG. NO.	CCTS.	TERMINAL	I.D. STRIPE	PLATING
38-00-2092	A-7720S-C 2J	2	40125-J(P918)	BROWN	HOT TIN DIP (1-3µM)/.000040-.000120
▲ 2093	▲ C 3J	3	▲	▲	
2094	C 4J	4			
2095	C 5J	5			
2096	C 6J	6			
2097	C 7J	7			
2098	C 8J	8			
2099	C 9J	9			
2100	C10J	10			
2101	C11J	11			
2102	C12J	12			
2103	C13J	13			
2104	C14J	14			
2105	C15J	15			
2106	C16J	16			
2107	C17J	17			
2108	C18J	18			
2109	C19J	19			
2110	C20J	20			
2111	C21J	21			
2112	C22J	22			
2113	C23J	23			
2114	C24J	24			
2115	C25J	25			
2116	C26J	26			
▼ 2117	▼ C27J	27	▼	▼	
38-00-2118	A-7720S-C28J	28	40125-J(P918)	BROWN	

PART NO.	ENG. NO.	CCTS.	TERMINAL	I.D. STRIPE	PLATING
38-00-0579	A-7720S-C6J(561)	6	40627-J(561)	BROWN	SELECTIVE GOLD (0.76µM)/.000030 MIN. OVER (1.27µM)/.000050 NICKEL MIN.

NOTE: 18 - 28 CIRCUITS ARE NON-STANDARD.

CORRECT PLATING EC NO: E2007-0125 DRWN: DNASZKI/EMI/CZ/2006/10/10 CHK'D: MORIARTY 2006/10/11 APPR: DENNEHY 2006/10/11	QUALITY SYMBOLS	GENERAL TOLERANCES (UNLESS SPECIFIED)		DIMENSION STYLE MM ONLY		SCALE ---	DESIGN UNITS METRIC	THIRD ANGLE PROJECTION	
	▼=0 ▽=0	mm	INCH	DRAWN BY MCC	DATE	TITLE	INSULATION DISPLACEMENT CONNECTOR (2.54)/.100 CENTRES		
		4 PLACES ±---	±---	CHECKED BY D.MORIARTY	DATE	molex MOLEX INCORPORATED			
		3 PLACES ±---	±---	APPROVED BY J.DENNEHY	DATE		MATERIAL NO.	DOCUMENT NO.	SHEET NO.
	2 PLACES ±---	±---	DRAFT WHERE APPLICABLE MUST REMAIN WITHIN DIMENSIONS		SEE CHART	SDA-7720S-*N*	3 OF 4		
	1 PLACE ±---	±---			THIS DRAWING CONTAINS INFORMATION THAT IS PROPRIETARY TO MOLEX INCORPORATED AND SHOULD NOT BE USED WITHOUT WRITTEN PERMISSION				
	ANGULAR ±---°								

9 8 7 6 5 4 3 2 1