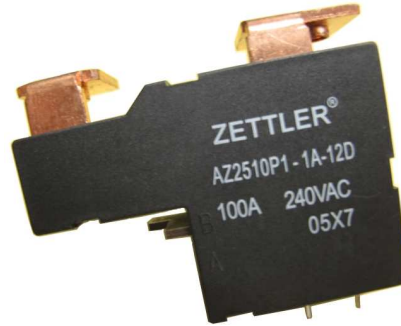


AZ2510

100 AMP LATCHING POWER RELAY

FEATURES

- 100 Amp switching
- Heavy loads to 24000 VA
- 4 kV dielectric
- Meets 8 mm creepage
- Mechanical position indicator which may be also used for manual operation or to actuate a micro-switch
- UL, CUR pending



CONTACTS

Arrangement	SPST (1 Form A)
Ratings	Resistive load: Max. switched power: 3000 W, 24000 VA Max. switched current: 100 A Max. switched voltage: 30 VDC, 400 VAC
Rated Load UL, CUR	100 A at 240 VAC, 10k cycles, Resistive
Material	Silver tin oxide
Resistance	< 2 milliohms initially (24 V, 1 A voltage drop method)

COIL

Power At Pickup Voltage (typical)	1.44 W single coil 2.88 W dual coil
Temperature	Max. 105°C (221°F)

NOTES

1. All values at 20°C (68°F).
2. Relay may pull in with less than "Must Operate" value.
3. Specifications subject to change without notice.
4. Allow suitable slack on leads when wiring, and do not subject the terminals to excessive force.

GENERAL DATA

Life Expectancy Mechanical Electrical	Minimum operations 1 x 10 ⁶ 1 x 10 ⁴ at 100 A 240 VAC Res.
Set and Reset Pulse Duration	36 ms minimum
Set Time (typical)	12 ms at nominal coil voltage
Reset Time (typical)	6 ms at nominal coil voltage
Dielectric Strength (at sea level for 1 min.)	4000 Vrms coil to contact 2000 Vrms between open contacts
Insulation Resistance	1000 megohms min. at 20°C, 500 VDC, 50% RH
Creepage Distance	8 mm
Ambient Temperature Operating Storage	At nominal coil voltage -40°C (-40°F) to 70°C (158°F) -40°C (-40°F) to 105°C (221°F)
Vibration	0.062" DA at 10–55 Hz
Shock Operating Non-Operating	10 g, 11 ms, 1/2 sine (no false operation) 100 g, 11 ms, 1/2 sine (no damage)
Enclosure	P.B.T. polyester
Terminals	Tinned copper alloy P.C. (coil), heavy tabs (power)
Max. Solder Temp.	270°C (518°F)
Max. Solder Time	5 seconds
Weight	82 grams



AMERICAN ZETTLER, INC.

www.azettler.com

75 COLUMBIA • ALISO VIEJO, CA 92656 • PHONE: (949) 831-5000 • FAX: (949) 831-8642 • E-MAIL: SALES@AZETTLER.COM

1/21/09W

AZ2510

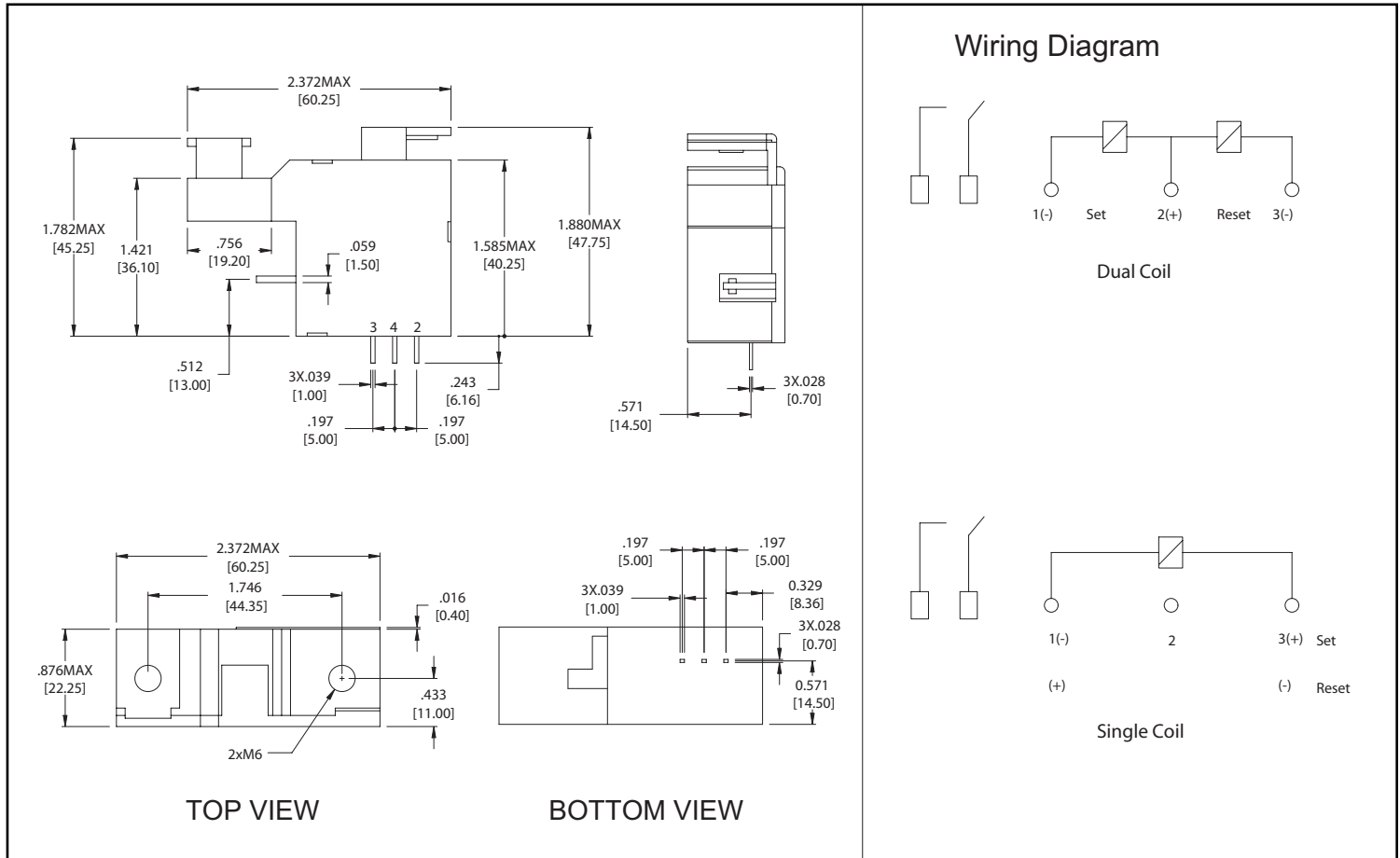
RELAY ORDERING DATA

COIL SPECIFICATIONS - Standard Single Coil				
Nominal Coil VDC	Must Operate VDC	Max. Continuous VDC [1]	Coil Resistance $\pm 10\%$	ORDER NUMBER
6	4.8	10	16	AZ2510P1-1A-6D
12	9.6	20	64	AZ2510P1-1A-12D
24	19.2	40	260	AZ2510P1-1A-24D
48	38.4	80	1024	AZ2510P1-1A-24D

COIL SPECIFICATIONS - Standard Dual Coil				
Nominal Coil VDC	Must Operate VDC	Max. Continuous VDC [1]	Coil Resistance $\pm 10\%$	ORDER NUMBER
6	4.8	10	8	AZ2510P2-1A-6D
12	9.6	20	32	AZ2510P2-1A-12D
24	19.2	40	130	AZ2510P2-1A-24D
48	38.4	80	512	AZ2510P2-1A-48D

[1] max. continuous voltage should not be applied for more than 30 seconds.

MECHANICAL DATA



AMERICAN ZETTLER, INC.

www.azettler.com

75 COLUMBIA • ALISO VIEJO, CA 92656 • PHONE: (949) 831-5000 • FAX: (949) 831-8642 • E-MAIL: SALES@AZETTLER.COM

1/21/09W