

# Coaxial High Pass Filter

## SHP-300+

50Ω 290 to 3000 MHz

### Maximum Ratings

Operating Temperature	-55°C to 100°C
Storage Temperature	-55°C to 100°C
RF Power Input	0.5W max.

### Features

- rugged shielded case
- other standard and custom SHP models available with wide selection of fco

### Applications

- lab use
- transmitters/receivers
- radio communications



CASE STYLE: FF99

Connectors	Model	Price	Qty.
SMA	SHP-300+	\$38.95 ea.	(1-9)

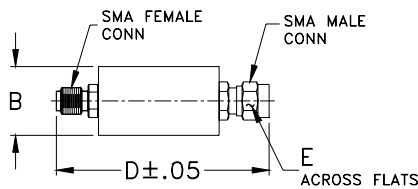
**+ RoHS compliant in accordance with EU Directive (2002/95/EC)**

The +Suffix has been added in order to identify RoHS Compliance. See our web site for RoHS Compliance methodologies and qualifications.

### High Pass Filter Electrical Specifications

STOPBAND (MHz)		fco (MHz) Nom.	PASSBAND (MHz)	VSWR (:1)	
(loss > 40 dB)	(loss > 20 dB)	(loss 3 dB)	(loss < 1.5 dB)	Stopband Typ.	Passband Typ.
DC-145	145-190	245	290-3000	17	1.7

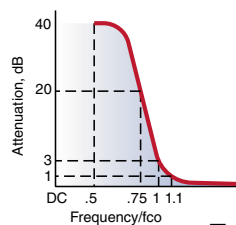
### Outline Drawing



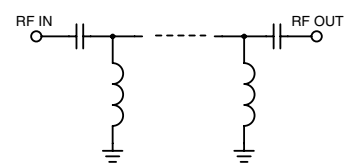
### Outline Dimensions (inch/mm)

B	D	E	wt
.67	1.98	.312	grams
17.02	50.29	7.92	42.0

### typical frequency response

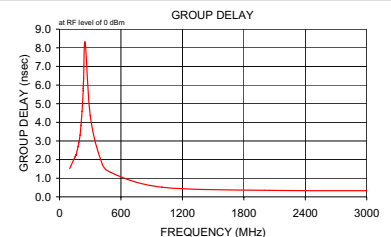
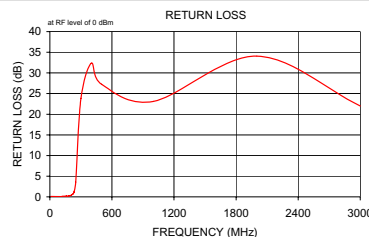
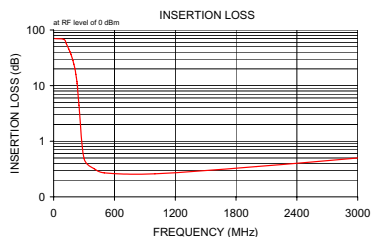


### electrical schematic



### Typical Performance Data

Frequency (MHz)	Insertion Loss (dB)	Return Loss (dB)	Frequency (MHz)	Group Delay (nsec)
	$\bar{x}$	$\sigma$		
10.00	70.05	4.53	100.00	1.52
100.00	67.77	0.48	125.00	1.84
125.00	56.38	0.52	150.00	2.14
150.00	45.47	0.61	159.00	2.24
159.00	41.59	0.66	160.00	2.25
160.00	41.15	0.66	161.00	2.24
162.00	40.29	0.67	162.00	2.25
163.00	39.86	0.67	163.00	2.28
164.00	39.43	0.67	164.00	2.29
170.00	36.88	0.71	170.00	2.45
180.00	32.65	0.77	180.00	2.69
190.00	28.46	0.84	190.00	2.94
200.00	24.28	0.90	200.00	3.32
210.00	20.10	0.98	210.00	3.84
220.00	15.91	1.05	220.00	4.59
225.00	13.82	1.08	225.00	5.09
230.00	11.75	1.10	230.00	5.69
231.00	11.35	1.11	231.00	5.81
232.00	10.94	1.11	232.00	5.94
233.00	10.53	1.11	233.00	6.08
234.00	10.13	1.10	234.00	6.22
235.00	9.74	1.10	235.00	6.36
236.00	9.34	1.10	236.00	6.50
250.00	4.46	0.85	250.00	8.29
300.00	0.49	0.02	300.00	4.35
400.00	0.32	0.03	400.00	2.02
500.00	0.27	0.03	500.00	1.31
1000.00	0.26	0.01	1000.00	0.52
2000.00	0.35	0.01	2000.00	0.35
3000.00	0.50	0.01	3000.00	0.33



**Mini-Circuits®**  
ISO 9001 ISO 14001 CERTIFIED

ALL NEW  
minicircuits.com

P.O. Box 350166, Brooklyn, New York 11235-0003 (718) 934-4500 Fax (718) 332-4661 For detailed performance specs & shopping online see Mini-Circuits web site



The Design Engineers Search Engine Provides ACTUAL Data Instantly From MINI-CIRCUITS At: [www.minicircuits.com](http://www.minicircuits.com)

RF/IF MICROWAVE COMPONENTS

REV. C  
M108294  
SHP-300+  
070308