



TAI-SAW TECHNOLOGY CO., LTD.

No. 3, Industrial 2nd Rd., Ping-Chen Industrial District,
Taoyuan, 324, Taiwan, R.O.C.

TEL: 886-3-4690038 FAX: 886-3-4697532

E-mail: tstsales@mail.taisaw.com Web: www.taisaw.com

Approval Sheet For Product Specification

Issued Date: 11, 18, 2004

Product Name: SAW Filter 533.33 MHz SMD 3.8x3.8 mm

TST Parts No.:TB0264A

Customer Parts No.:_____

Company: _____
Division: _____
Approved by : _____
Date: _____

Checked by: _____ Asin Lin

Approval by: _____ Francis Chen

Date: _____ 11, 18, 2004



TAI-SAW TECHNOLOGY CO., LTD.

No. 3, Industrial 2nd Rd., Ping-Chen Industrial District,
Taoyuan, 324, Taiwan, R.O.C.

TEL: 886-3-4690038 FAX: 886-3-4697532

E-mail: tstsales@mail.taisaw.com Web: www.taisaw.com

SAW Filter 533.33MHz

MODEL NO.: TB0264A

REV. NO.:2

A. MAXIMUM RATING:

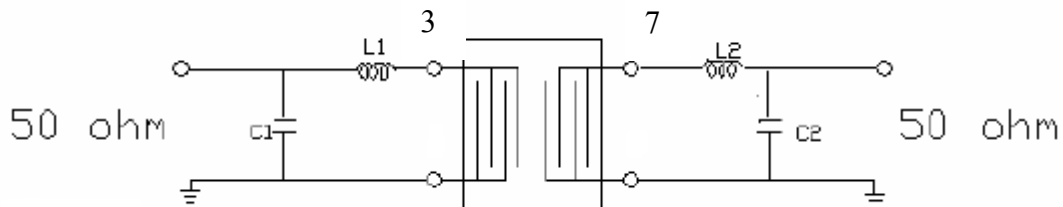
1. Input Power Level : 10 dBm
2. Operating Temperature: -40°C to 85°C
3. Storage Temperature: -40°C to 85°C

RoHS Compliant
Lead free
Lead-free soldering

B. ELECTRICAL CHARACTERISTICS:

Item	Unit	Min.	Type.	Max.	Note
Center frequency, F_c	MHz	-	533.33	-	-
Insertion Loss, IL	dB	-	8.3	9	-
Passband width, BW₃	MHz	4.5	8.3	-	-
Passband width, BW₃₅	MHz	-	17	-	-
Amplitude Ripple in F _c ±1MHz	dB	-	0.8	1	-
Group delay ripple in F _c ±1MHz	nS	-	65	100	-
Phase Linearity in F _c ±1MHz	deg		2	4	
Attenuation:(Reference level from Min IL)					
10 MHz to 504 MHz	dB	40	50	-	-
504 MHz to 521.34 MHz	dB	30	45	-	-
545.34 MHz to 560 MHz	dB	30	45	-	-
560 MHz to 1000 MHz	dB	40	50	-	-

C. MEASUREMENT CIRCUIT:



Input L1=10nH, C1=10pF
Output L2=10nH, C2=8pF

D. Frequency Characteristics :

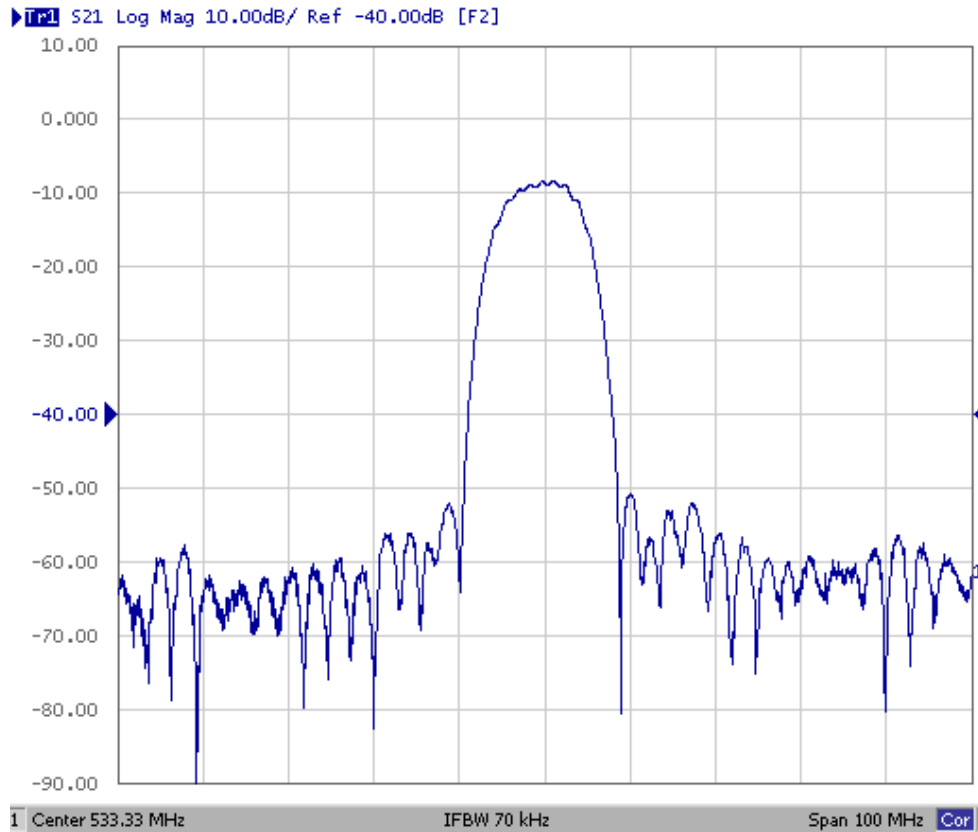


Fig-1 S21 Response Horizontal: 10MHz/Div
Vertical: 10dB/Div

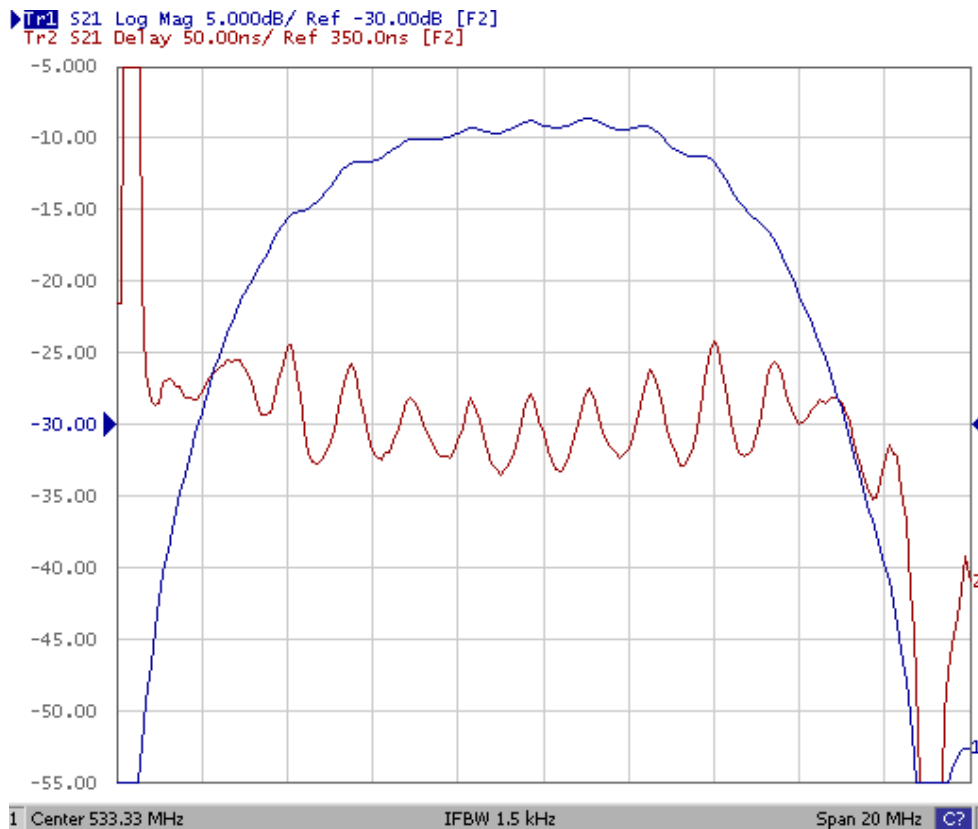
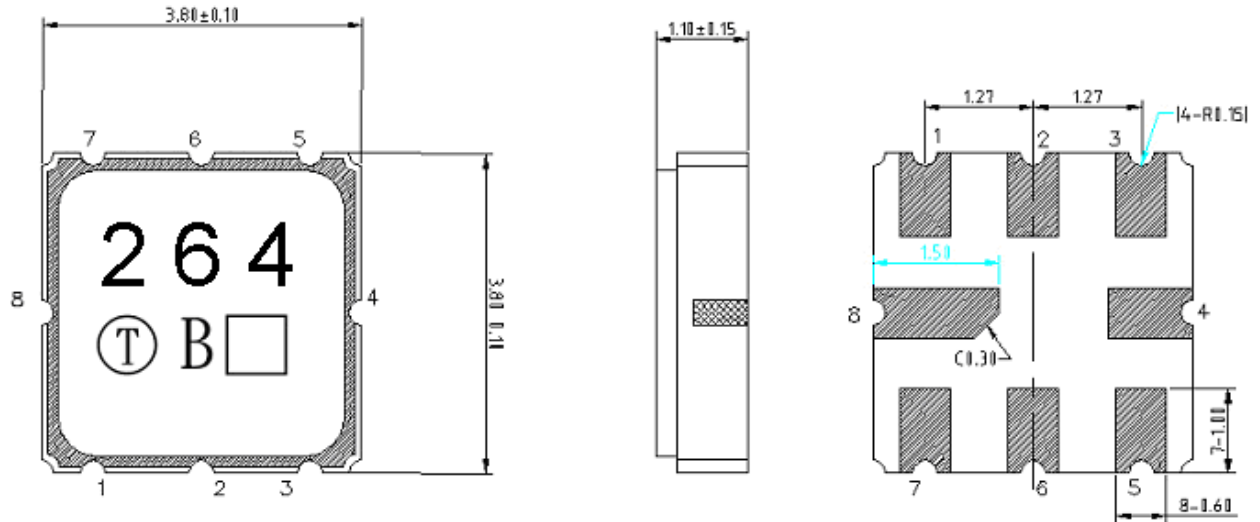


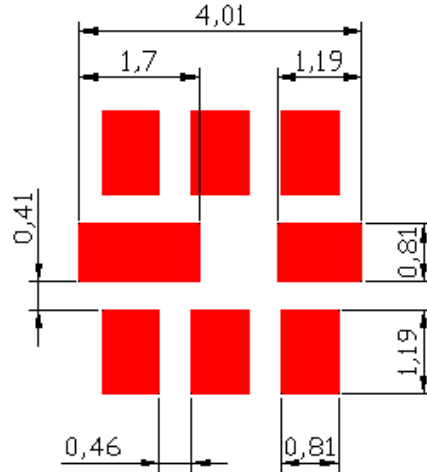
Fig-2 Horizontal: 2M Hz/Div Vertical: 5dB/Div
Vertical: 50ns/Div

E. Outline Drawing :



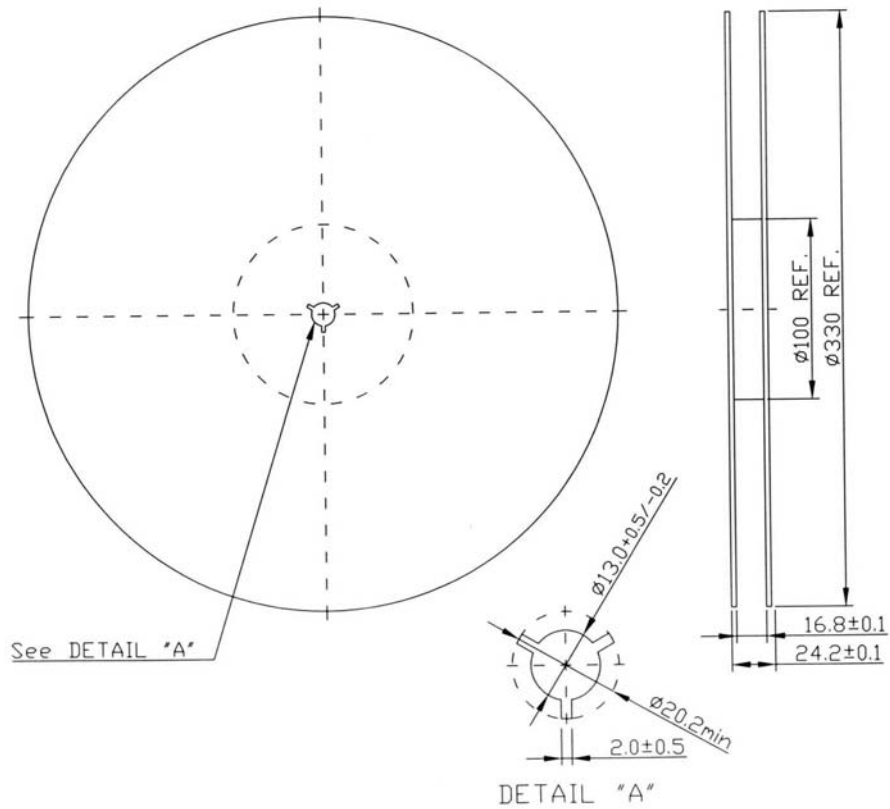
- Pin 3 : RF input or Balance input
- Pin 7 : RF output or Balance output
- Pin 2 : RF input ground or Balance input return
- Pin 6 : RF output ground or Balance output return
- Pin 1, 4, 5, 8 : To be Ground
- : Date code
- Unit : mm

F. PCB Footprint



G. Packing:

1. REEL DIMENSION



2. TAPE DIMENSION

