

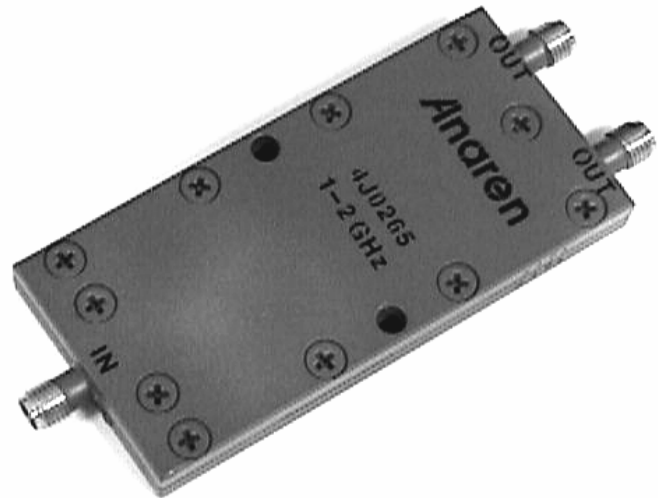
### Power Dividers 2-Way

#### Applications

- Phased Arrays
- Antenna Feed Networks
- Image Reject Mixers
- Test Systems
- LO Power Dividers

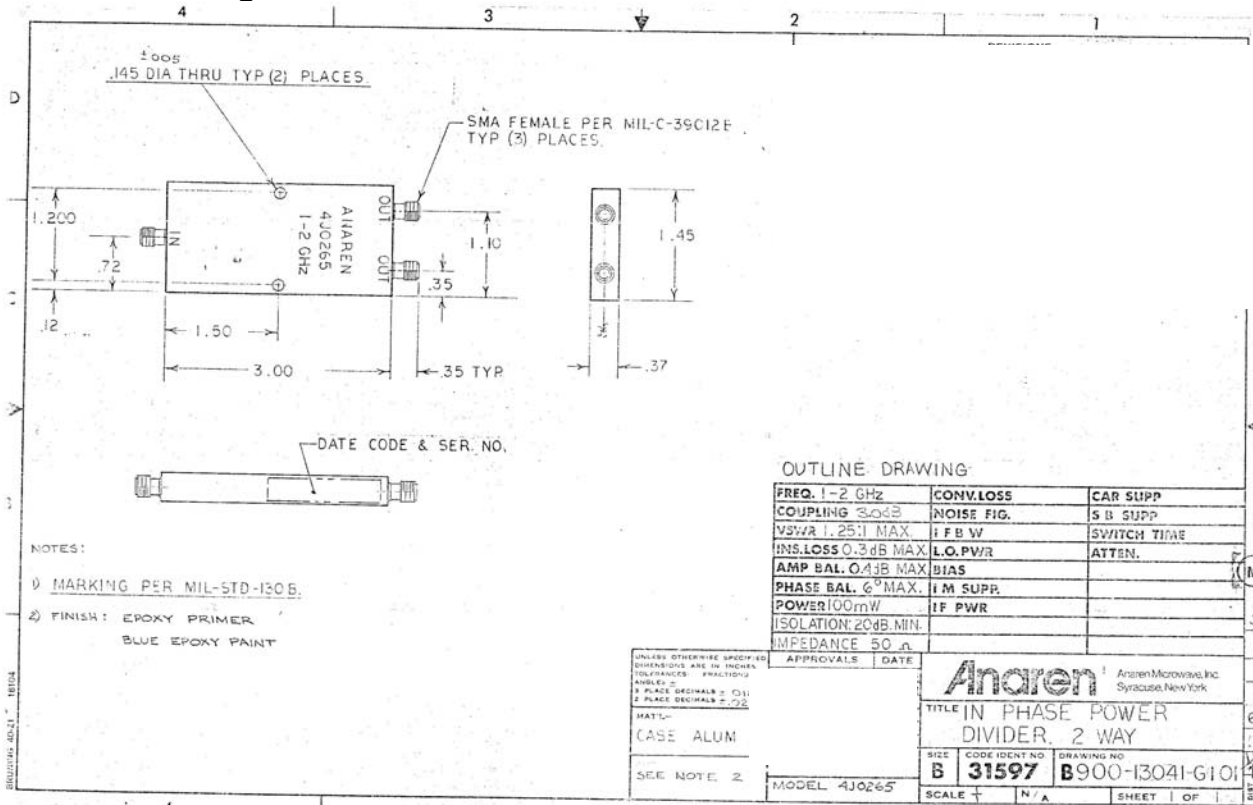
#### Features

- Military Grade
- 1.0 – 2.0 GHz
- 2-Way Power Split
- In-Phase
- Connectors Per MIL-C-39012
- Rugged Aluminum Housing
- Low VSWR
- Meets MIL-E-5400 Class 3 Requirements

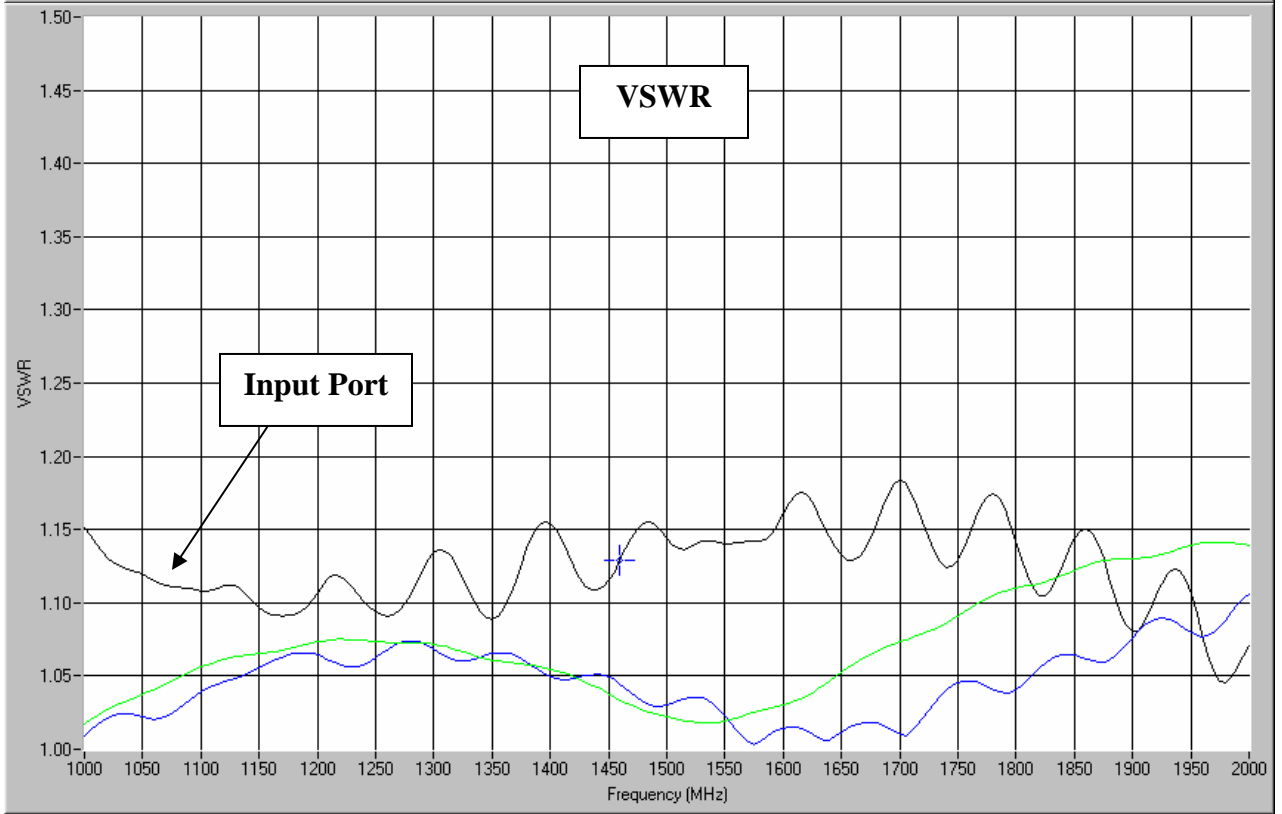
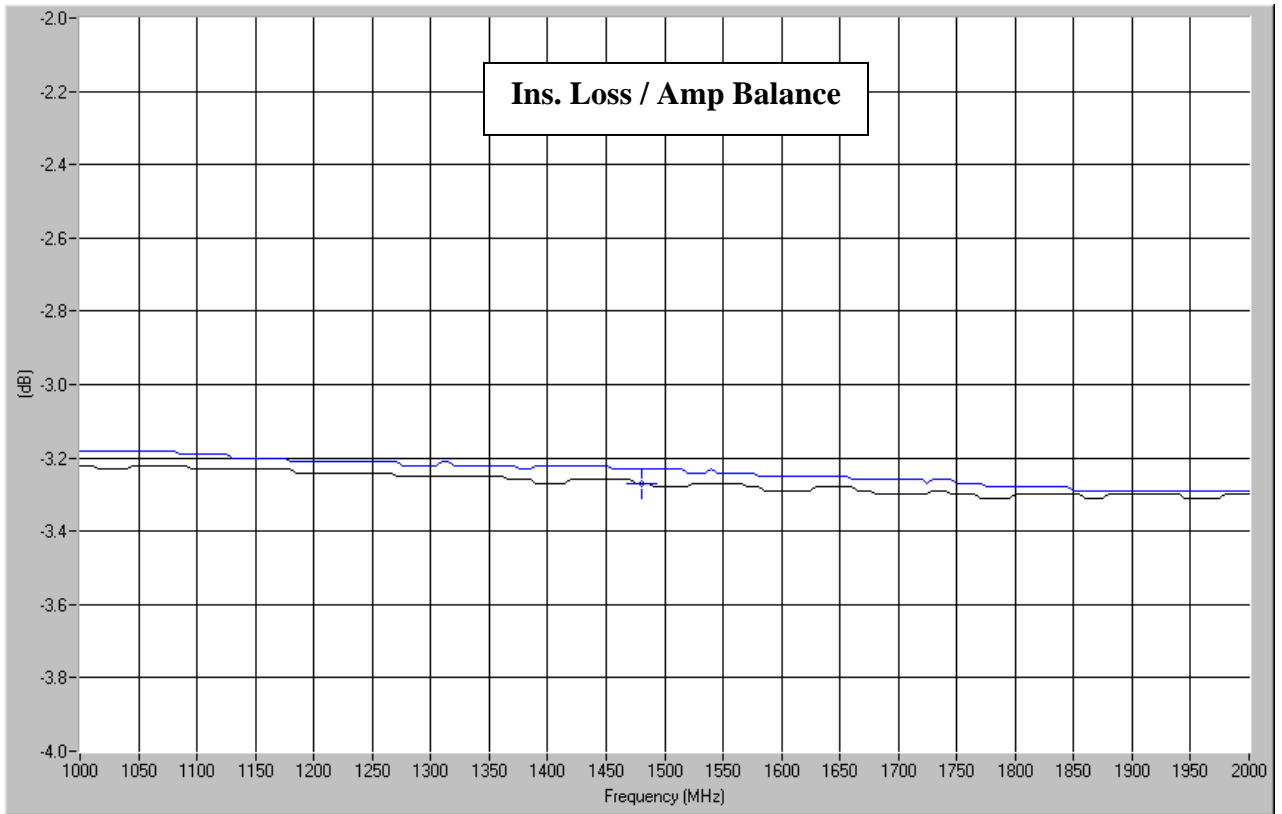


**NOTES:** Input power with load VSWR of 1.20:1  
Electrical and Mechanical Specifications subject to change without notice

#### Outline Drawing



**Typical Test Data Plots**



USA/Canada: (315) 432-8909  
 Toll Free: (800) 411-6596  
 Europe: +44 2392-232392

### Typical Test Data Plots

