

### Ordering Code

CTMD 5 P - 5 J 1 S AO 1500

MiniDIN Cable Assembly

Pin Count (1st End):  
3,4,5,6,7,8 and 9

Connector Type (1st End):  
P = Male  
J = Female

Pin Count (2nd End):  
3,4,5,6,7,8 and 9  
0 = Open End

Connector Type (2nd End):  
P = Male  
J = Female  
O = Open End (Cut Off)  
V = Open End, Jacket Stripped 40mm, Wire Ends Twisted and Tinned 5mm

Housing Types (See Drawings Below):  
1 = Type 1 (Standard)  
4 = Type 4  
5 = Type 5 (Male with 3 to 8 pins and Female with 8 pins only)

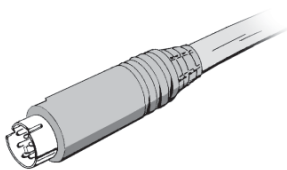
Colour Code:  
S = Black (Standard)    G = Grey    B = Beige

Cable (Shielding and UL-Approval):  
AO = AWG26 (Standard) with Alu-foil, without UL-Approval  
AX = AWG24 or AWG28 with Alu-foil, without UL-Approval  
AU = AWG24, 26 or 28 with Alu-foil, with UL-Approval  
CU = AWG24, 26 or 28 with Cu braided Shield and with Alu-foil, with UL-Approval  
OO = AWG 24, 26 or 28 Unshielded, without UL-Approval  
**Info:** Shielded cables always come with Drain Wire!  
OO = Minimum Ordering Length for Cable is 3,000 meters  
All others = Minimum Ordering Length for Cable 1,000 meters

Overall Length

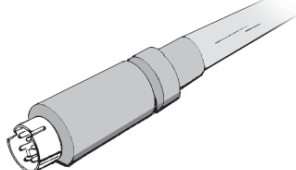
### Housing Types

Type 1 (Moulded)  
Round Type (std.)



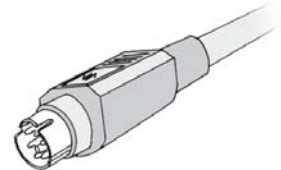
Male or Female  
3 to 9 pins  
Min. Order Qty. 100 pcs.

Type 4 (Moulded)  
Conical Type



Male or Female  
3 to 9 pins  
Min. Order Qty. 100 pcs.

Type 5 (Mounted)  
'Quick Lock' Housing



Male 3 to 8 pins  
Female 8 pins only  
Min. Order Qty. 100 pcs.