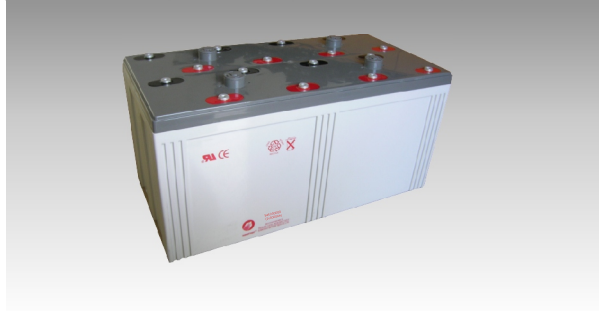
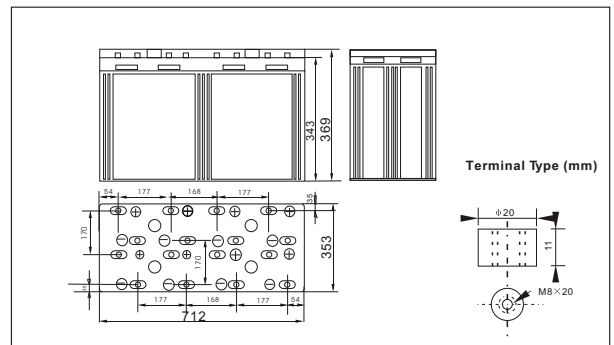




# SWE230000(2V3000AH)



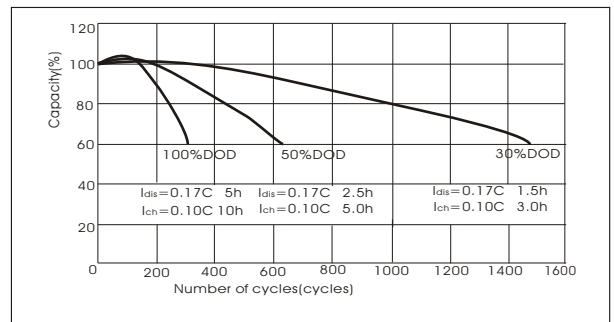
## Outer dimensions (mm)



## Specifications

Nominal Voltage		2 V
Rated capacity (10 hour rate)		3000 Ah
Dimensions	Total Height	369 mm (14.5inches)
	Height	343mm (13.5 inches)
	Length	712 mm (28.0 inches)
	Width	353 mm (13.9inches)
Weight Approx		196 Kg (437lbs)

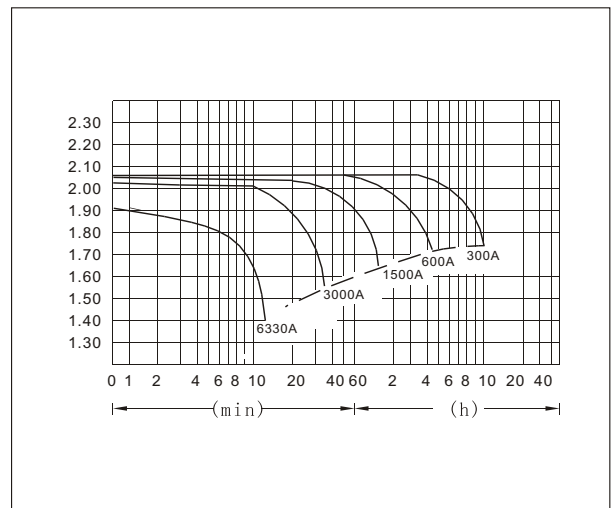
## Curves of cycle life(25°C)



## Characteristics

Capacity 25°C(77°F)	10 hour rate(300 A)	3000 AH
	5 hour rate(480 A)	2400 AH
	1 hour rate(1800 A)	1800 AH
	1.5 hour discharge to 1.75 V	1200 A
Internal Resistance	Full charged Battery at 25°C(77°F)	0.08 mΩ
Capacity affected by Temperature (10hour rate)	40°C(104°F)	102%
	25°C(77°F)	100%
	0°C(32°F)	85%
	-15°C(5°F)	65%
Self-Discharge at 25°C(77°F)	Capacity after 3 month storage	91%
	Capacity after 6 month storage	82%
	Capacity after 12 month storage	64%
Terminal	T20	
Charge (constant Voltage)	Cycle	Initial Charging Current less than 1200 A Voltage 2.35-2.40V
	Float	Voltage 2.25-2.30V

## Discharge Curves 25°C(77°F)



## Constant Current(Amp) and Constant Power(Watt) Discharge Table at 25°C(77°F)

Time		5min	10min	15min	30min	1h	2h	3h	4h	5h	8h	10h	20h
1.60V	A	9609	6330	5103	3420	1800	1050	771	600	495	351	315	170
	W	16527	11267	9119	6129	3240	1922	1430	1125	938	670	606	330
1.70V	A	9306	5712	4806	3270	1692	1002	750	585	486	342	309	165
	W	16565	10630	8963	6118	3189	1925	1448	1134	944	667	605	323
1.75V	A	9003	5109	4203	3060	1638	978	732	576	480	339	303	165
	W	16385	9687	7994	5869	3161	1890	1422	1123	938	664	598	325
1.80V	A	8676	4815	3906	2820	1584	954	714	567	468	330	300	162
	W	16224	9254	7500	5445	3073	1862	1403	1116	922	652	594	322
1.85V	A	8385	4512	3606	2520	1530	930	690	552	456	321	285	153
	W	15848	8708	6996	4914	2999	1832	1366	1096	907	641	573	309