

CX-2H-SM

16kHz to 600kHz

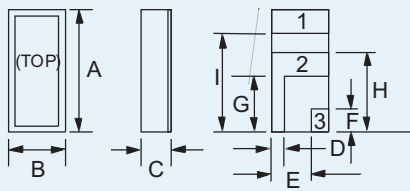
MINIATURE SMD CRYSTAL
FOR SERIES OSCILLATORS

Page
1 of 2

Telephone: +44(0)1460 230000
Fax: +44(0)1460 230001
Email: sales@euroquartz.co.uk
Web: www.euroquartz.co.uk

General Description

The miniature CX-2H-SM quartz crystal is a high quality tuning-fork resonator for use in series (two cascaded inverters) oscillators. The CX-2H-SM is hermetically sealed in a rugged, leadless ceramic package. The crystal has been designed for surface-mounting on printed circuit boards or hybrid circuits. The CX-2H-SM crystal is manufactured using a photo-lithographic process, yielding consistently high quality production parts.



Terminal 1 is electrically connected to terminal 3

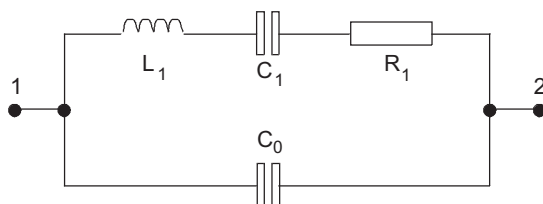
Outline

CX-2-SM Package Dimensions

Dimension	Typical (mm)	Maximum (mm)
A	6.60	6.99
B	2.39	2.74
C	-	see below
D	0.89	1.14
E	1.50	1.75
F	1.27	1.52
G	2.67	2.92
H	3.94	4.19
I	5.33	5.59

Dimension "C"	Glass Lid (mm max.)	Ceramic Lid (mm max.)
SM1	1.65	1.91
SM2	1.70	1.96
SM3	1.78	2.03

Equivalent Circuit



R_1 Motional Resistance L_1 Motional Inductance
 C_1 Motional Capacitance C_0 Shunt Capacitance

- Miniature tuning-fork design
- High shock resistance
- Designed for low-power applications
- Compatible with hybrid or PC board packaging
- Low ageing
- Full military environmental testing available
- Ideal for battery operated applications

Specification

Frequency Range:	16kHz to 600kHz
Calibration Tolerance*:	A, B or C (see table)
Motional Resistance (R_1):	Figure 1 Max.: 16 ~ 169.9kHz, 2x typ. 170~600kHz, 2.5x typ.
Motional Capacitance (C_1):	Figure 2
Quality Factor (Q):	Figure 3 Min. is 0.25x typ.
Shunt Capacitance (C_0):	2.0pF max.
Drive Level:	16~24.98kHz 1.5µW max. 25~600kHz 3.0µW max.
Turning Point (T_0)**:	Figure 4
Temperature Coefficient:	-0.035ppm/°C ²
Ageing, first year:	±5ppm max.
Shock, survival***:	1,500g 0.3ms, ½ sine
Vibration, survival***:	10g rms, 20-2,000Hz random
Operating Temperature:	-10°~+70°C (commercial) -40°~+85°C (industrial) -55°~+125°C (military)
Storage Temperature:	-55°C~+125°C
Process Temperature:	260°C for 20 seconds

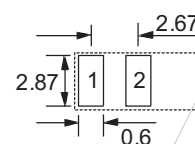
Specifications are typical at 25°C unless otherwise indicated.

- * Tighter frequency calibration available
- ** Other turning point available
- *** Higher shock and vibration version available

CX-1H-SM Crystal Calibration Tolerance at 25°C

Calibration	Frequency Range (kHz)			
	16~74.9	75~169.9	170~249.9	250~600
A	±0.003%	±0.005%	±0.01%	±0.02%
B	±0.01%	±0.01%	±0.02%	±0.05%
C	±0.1%	±0.1%	±0.2%	±0.5%

Solder Pad Layout



CX-2H-SM
16kHz to 600kHz
 MINIATURE SMD CRYSTAL
 FOR SERIES OSCILLATORS

Page
 2 of 2

Telephone: +44(0)1460 230000
 Fax: +44(0)1460 230001
 Email: sales@euroquartz.co.uk
 Web: www.euroquartz.co.uk

Circuit Design

Conventional Series Oscillator Circuit

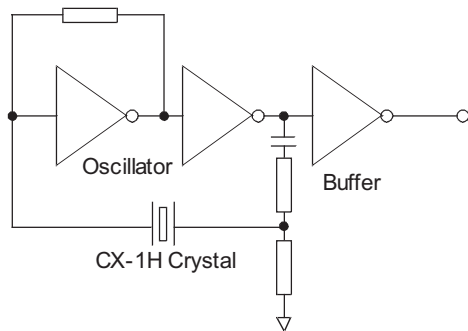


Figure 1 - CX-2H Typical Motional Resistance (R_1)

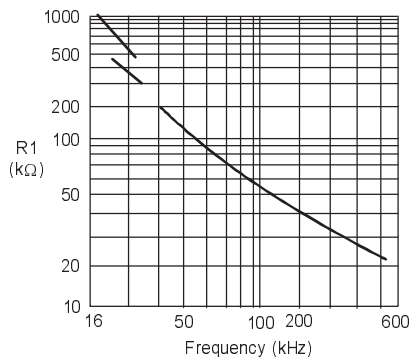


Figure 2 - CX-2H Typical Motional Capacitance (C_1)

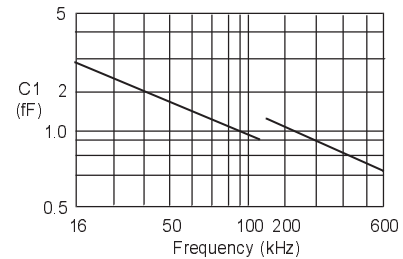


Figure 3 - CX-2H Typical Quality Factor (Q)

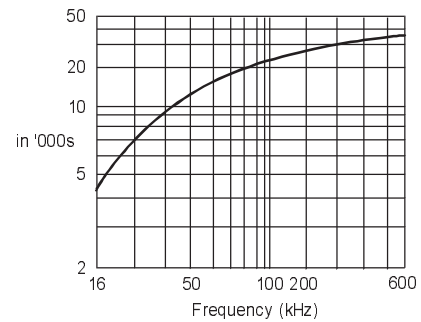
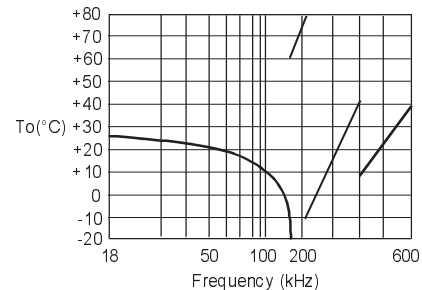


Figure 4 - CX-2H Typical Turning Point Temp. (T_0)



Packaging

CX-2H-SM - Bulk Pack (Standard)
 - 16mm tape, 178mm or 330mm reels (Optional)
 per EIA 481
 - Tray Pack (Optional)

Order Code

CX-2H C = Ceramic Lid
Blank = Glass Lid Frequency **-SM1 32.768kHz** (**A** / **I**)

"S" if special or custom design
Blank if standard

SM1
SM2
SM3

Calibration Tolerance*
@ 25°C
A, B, C

Temperature Range:
C = Commercial
I = Industrial
M = Military
S = Specify

*For other calibration tolerances enter figure in ppm

Terminations

Designation	Termination
SM1	Gold Plated
SM2	Nickel, Solder Plated
SM3	Nickel, Solder Plated and Solder Dipped