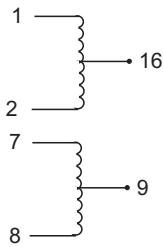


# Dual Splitter/Combiner

## EPG5003S

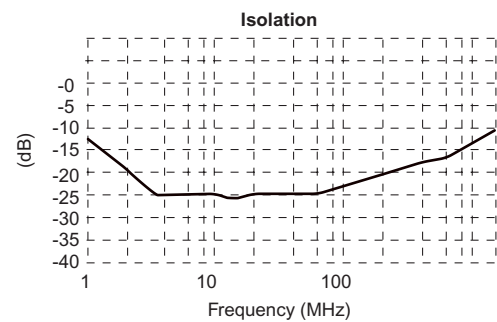
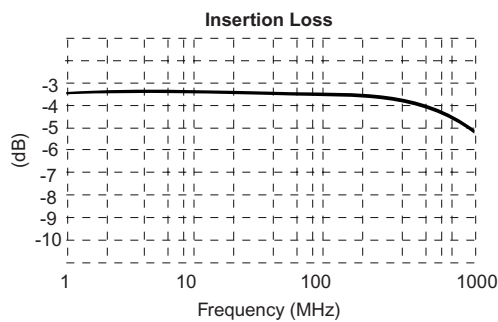
### Schematic



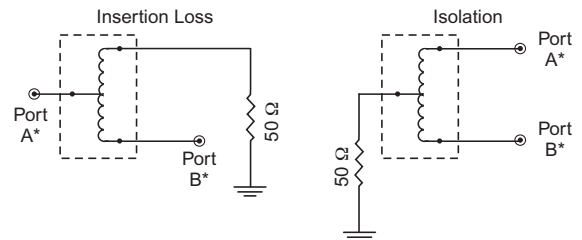
- 5 MHz - 1 GHz Frequency Response •
- Low Insertion Loss •
- 16 Pin Surface Mount Package •
- Source Impedance : 50 Ω •

### Electrical Parameters @ 25°C

Insertion Loss (dB Typ.)			Isolation (dB Typ.)			Phase Unbalance (Degrees Max.)			Amplitude Unbalance		
5-50 MHz	50-500 MHz	500MHz - 1GHz	5-50 MHz	50-500 MHz	500MHz - 1GHz	5-50 MHz	50-500 MHz	500MHz - 1GHz	5-50 MHz	50-500 MHz	500MHz - 1GHz
-0.8	-1.4	-2.0	-20	-17	-14	TBD	TBD	TBD	TBD	TBD	TBD



\* Network Analyzer Set @ S21 Mode  
(Both Insertion Loss and Isolation)



### Dimensions

Dim.	(Inches)			(Millimeters)		
	Min.	Max.	Nom.	Min.	Max.	Nom.
A	.480	.500	.490	12.19	12.70	12.45
B	.290	.310	.300	7.37	7.87	7.62
C	.210	.230	.220	5.33	5.84	5.59
D	---	---	.350	---	---	8.89
E	.010	.015	.012	.254	.381	.305
F	---	---	.050	---	---	1.27
G	.410	.430	.420	10.41	10.92	10.67
H	.016	.022	.019	.406	.559	.483
I	.008	.012	.010	.203	.305	.254
J	---	---	.070	---	---	1.78
K	0°	8°	4°	0°	8°	4°
L	.025	.045	.035	.635	1.14	.889
M	---	---	.030	---	---	.762
N	---	---	.050	---	---	1.27
P	---	---	.090	---	---	2.29
Q	---	---	.480	---	---	12.19

