

Coaxial

Power Splitter/Combiner

ZN2PD-920W+

2 Way-0° 50Ω 700 to 1050 MHz

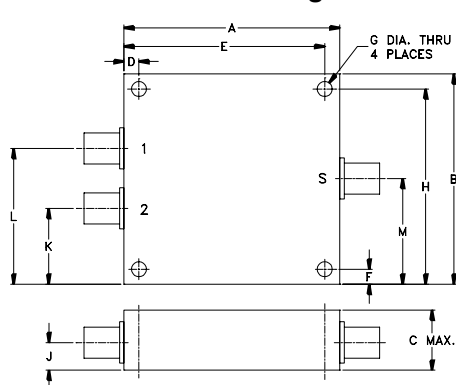
Maximum Ratings

Operating Temperature	-55°C to 100°C
Storage Temperature	-55°C to 100°C
Power Input (as a splitter)	10W max.
Internal Dissipation	0.125W max.

Coaxial Connections

SUM PORT	S
PORT 1	1
PORT 2	2

Outline Drawing



Outline Dimensions (inch/mm)

A	B	C	D	E	F	G	
1.80	1.75	.66	.125	1.675	.125	.125	
45.72	44.45	16.76	3.18	42.55	3.18	3.18	
H	J	K	L	M	wt		
1.625	.31	.63	1.13	.88	grams		
41.28	7.87	16.00	28.70	22.35	34		

Features

- low insertion loss, 0.15 dB typ.
- good isolation, 22 dB typ.
- up to 10W power input as a splitter
- excellent amplitude unbalance, 0.1 dB typ.
- excellent VSWR, 1.1:1 typ.
- rugged shielded case

Applications

- UHF
- cellular
- communications systems
- instrumentation



CASE STYLE: VVV180

Connectors	Model	Price	Qty.
SMA	ZN2PD-920W-S+	\$54.95	(1-9)

+ RoHS compliant in accordance with EU Directive (2002/95/EC)

The +Suffix has been added in order to identify RoHS Compliance. See our web site for RoHS Compliance methodologies and qualifications.

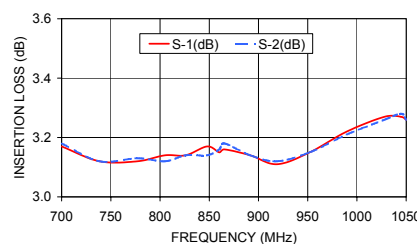
Electrical Specifications

FREQ. RANGE (MHz)	ISOLATION (dB)		INSERTION LOS (dB) ABOVE 3.0 dB		PHASE UNBALANCE (Degrees)	AMPLITUDE UNBALANCE (dB)	VSWR (:1)	
	Typ.	Min.	Typ.	Max.			S	OUT
f_L - f_U					Max.	Max.	Typ.	Max.
700-1050	22	15	0.15	0.5	3	0.3	1.20 1.50	1.04 1.20

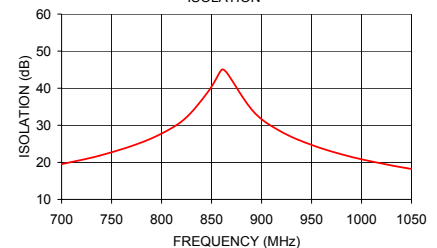
Typical Performance Data

Frequency (MHz)	Insertion Loss (dB)		Amplitude Unbalance (dB)	Isolation (dB)	VSWR S	VSWR 1	VSWR 2
	S-1	S-2					
700.00	3.17	3.18	0.01	19.51	1.23	1.01	1.01
738.50	3.12	3.12	0.01	21.84	1.18	1.02	1.02
777.00	3.12	3.13	0.01	25.07	1.12	1.02	1.02
805.00	3.14	3.12	0.02	28.48	1.09	1.03	1.02
826.00	3.14	3.14	0.00	32.45	1.06	1.03	1.02
847.88	3.17	3.14	0.03	39.57	1.05	1.03	1.02
860.13	3.15	3.16	0.01	45.00	1.04	1.03	1.02
865.38	3.16	3.18	0.02	44.13	1.04	1.02	1.02
891.63	3.14	3.14	0.00	33.77	1.06	1.02	1.02
918.75	3.11	3.12	0.01	28.40	1.08	1.02	1.02
952.00	3.15	3.15	0.00	24.51	1.13	1.01	1.01
989.63	3.22	3.21	0.01	21.49	1.18	1.01	1.01
1028.13	3.27	3.26	0.01	19.27	1.23	1.02	1.02
1044.75	3.27	3.28	0.00	18.46	1.26	1.03	1.03
1050.00	3.26	3.26	0.00	18.20	1.27	1.03	1.03

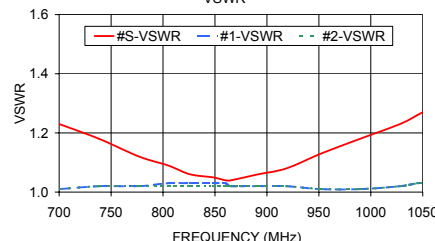
ZN2PD-920W+ INSERTION LOSS



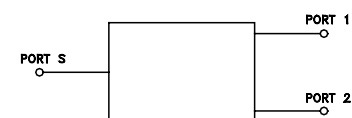
ZN2PD-920W+ ISOLATION



ZN2PD-920W+ VSWR



electrical schematic



Mini-Circuits®
ISO 9001 ISO 14001 CERTIFIED

ALL NEW
minicircuits.com

P.O. Box 350166, Brooklyn, New York 11235-0003 (718) 934-4500 Fax (718) 332-4661 For detailed performance specs & shopping online see Mini-Circuits web site



The Design Engineers Search Engine Provides ACTUAL Data Instantly From MINI-CIRCUITS At: www.minicircuits.com

RF/IF MICROWAVE COMPONENTS

REV. B
M113397
ZN2PD-920W+
HY/TD/CP/AM
071029