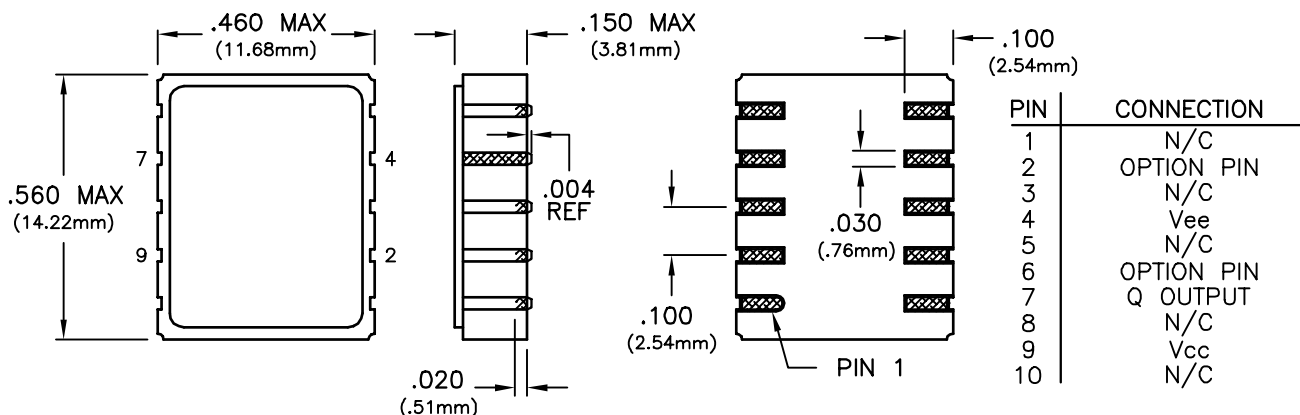
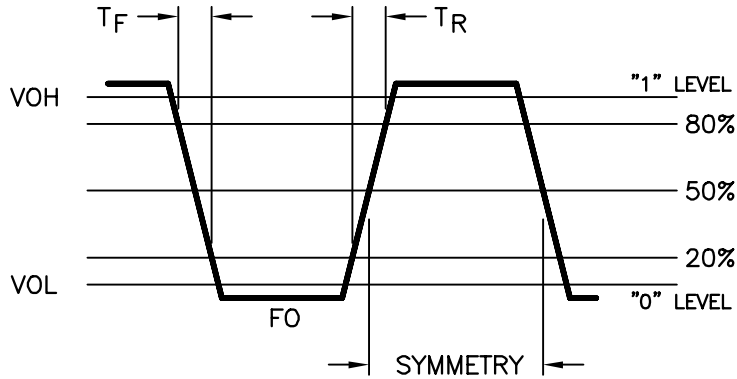


SURFACE MOUNT 3.3V PECL

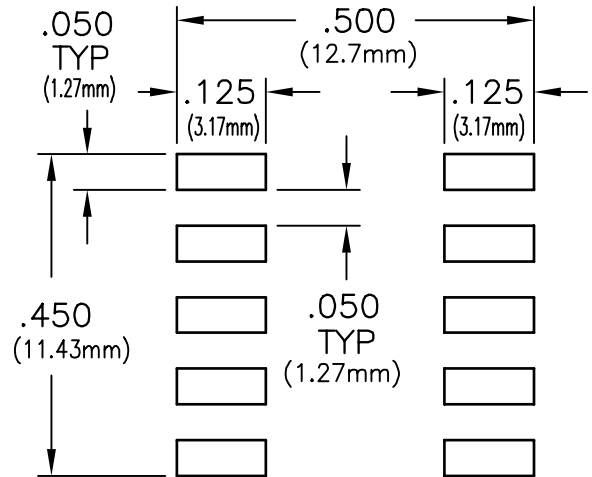
SPECIFICATIONS	EE94-51*	EE94-52*	EE94-53*	EE94-54*
Frequency Range	13MHz to 167MHz	13MHz to 200MHz		13MHz to 167MHz
Frequency Stability	±25ppm	±50ppm	±100ppm	±20ppm
	(Inclusive of calibration tolerance at 25°C, operating temperature range, input voltage change, load change, aging, shock and vibration)			
Temperature Range	0°C to +70°C			
Output	Waveform	Low Voltage, PECL Squarewave		
	Load	Output must be terminated into 50 ohms to Vcc-2V		
	Voltage Voh	2.275 Minimum		
	Vol	1.68 Maximum		
	Duty Cycle	45/55 Maximum measured at 1.97V		
	Rise/Fall Time	1nS Maximum measured from 20% to 80%		
Jitter	1.0ps RMS Maximum over 12KHz to 20MHz bandwidth 5.0ps RMS Maximum over 10Hz to 20MHz bandwidth			
Supply Voltage (Vcc)	+3.3Vdc ±5%			
Supply Current	60mA Maximum			
Package	Hermetically sealed, leadless ceramic package			
Options * (add letter to end of model number)	0	Pin 2 and Pin 6: No Connection		
	1	Pin 6: Complementary Output , Pin 2: No Connection		
	2	Pin 2: Enable/Disable , Pin 6: No Connection Enable; Low Level, Vil (1.90V Max) , Disable; High Level, Vih (2.10V Min) NOTE: When oscillator is disabled the output is in a high state (Voh)		
	3	Pin 2: Complementary Output , Pin 6: No Connection		
	4	Pin 6: Complementary Output , Pin 2: Enable/Disable Enable; Low Level, Vil (1.90V Max) , Disable; High Level, Vih (2.10V Min) Pin 6 Disables to low state (Vol), Pin 7 Disables to high state (Voh)		



OUTPUT WAVEFORM



SUGGESTED PAD LAYOUT



TEST CIRCUIT

