

**Data Sheet**

Product Category: IF SAW Filter

Part Number	Package	Application	Last Modified
835-IF218.64M-A	35.0 x 12.8 Thru Hole	Base Station & Repeater	Jan. 01, 2007

TYPE :

218.64 MHz Bandpass Filter

PART NUMBER :

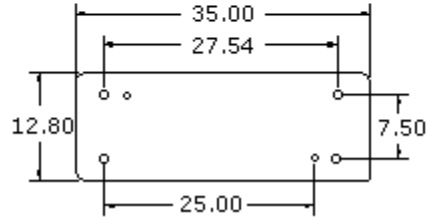
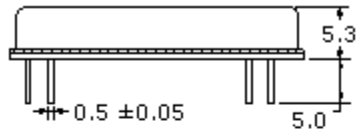
**835-IF218.64M-A****OPERATING CONDITIONS / ELECTRICAL CHARACTERISTICS**

PARAMETERS	Minimum	Typical	Maximum	Units
Center Frequency	-	218.640	-	MHz
Insertion Loss	-	23.2	25.0	dB
Source Impedance (single ended)*	-	50	-	ohm
Load Impedance (single ended)*	-	50	-	ohm
1dB Bandwidth	-	1.72	-	MHz
3dB Bandwidth	-	1.87	-	MHz
40dB Bandwidth	-	2.54	-	MHz
Amplitude Ripple	-	0.75	1.2	dBp-p
Group Delay Variation (smo 0.5%)	-	180	-	ns
Absolute Delay	-	3.97	-	μs
Ultimate Rejection	50	55	-	dB
Temperature Coefficient	-	-0.03	-	ppm/°C
Ambient Temperature	-	25	-	°C

\* with Matching Network (Ref. Testing Environment Circuit as shown below). Those impedances could be modified with different impedances values and/or structures, if necessary.

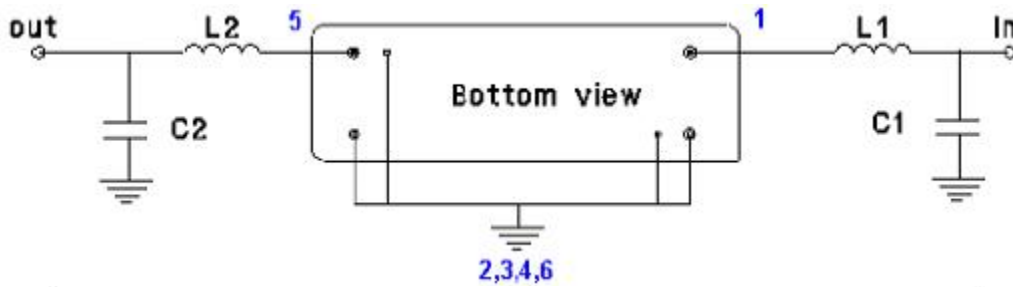
\*\* Custom SAW IF Filters available. Contact Oscilent for assistance.

**PACKAGE OUTLINE** (mm)



PIN Descriptions: IN-1, OUT 5, GROUND -2,3,4,6,Case

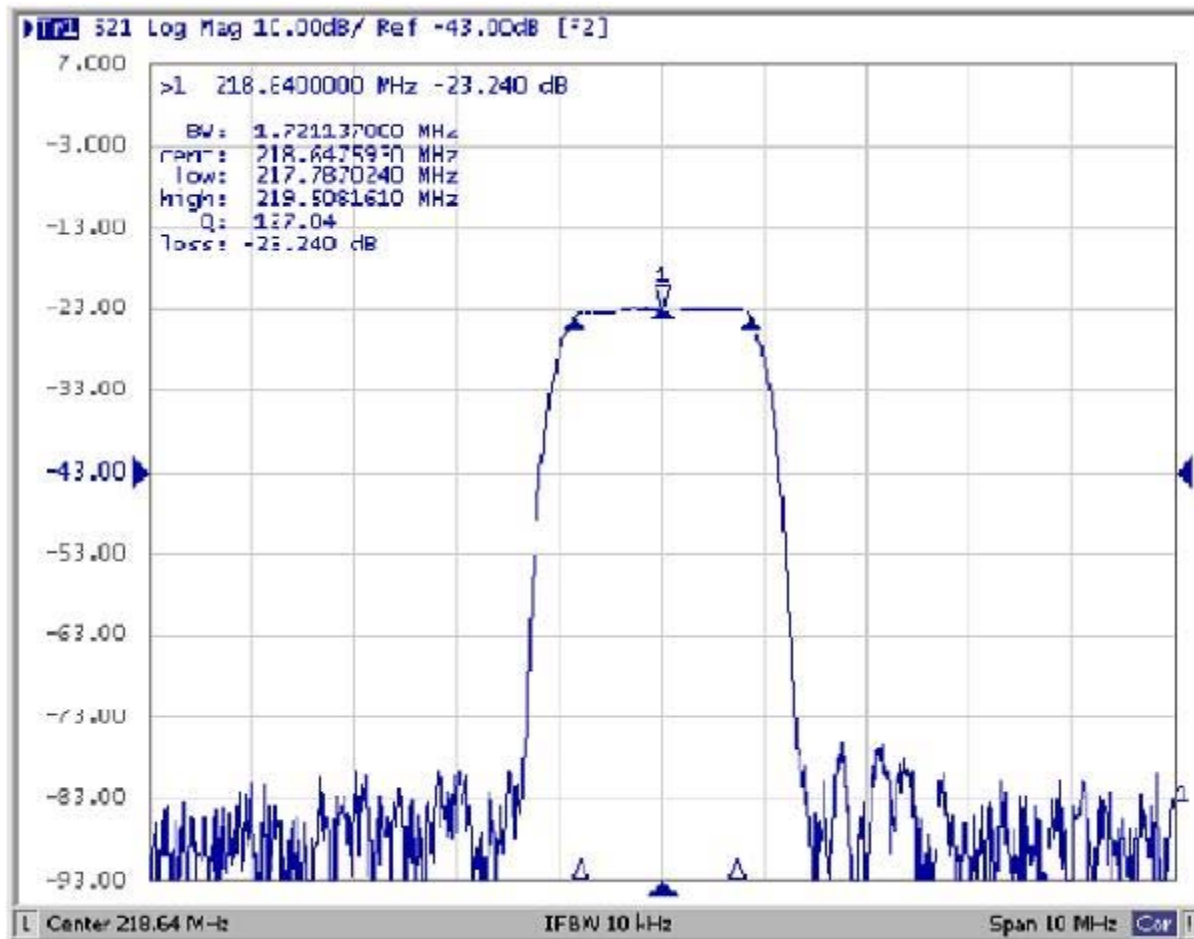
**TEST ENVIRONMENT**



Test Fixture & Values	
Input	L1=12nH , C1=30pF
Output	L2=15nH , C2=36pF

Source & Load Impedance: 50 ohm

**FREQUENCY RESPONSE**



**Oscilent Corporation** - CALL **949.252.0522**

**Part No.:** 835-IF218.64M-A

18195 East McDermott Street, Building D, Irvine, CA 92614, USA  
Fax: 949.252.0599, E-Mail: Sales@Oscilent.com