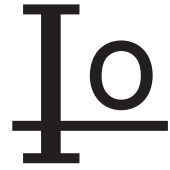


# MR850 THRU MR856



3.0 AMP FAST RECOVERY RECTIFIERS



## FEATURES

- \* Low forward voltage drop
- \* High current capability
- \* High reliability
- \* High surge current capability

## MECHANICAL DATA

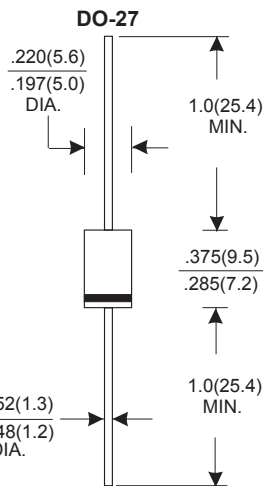
- \* Case: Molded plastic
- \* Epoxy: UL 94V-0 rate flame retardant
- \* Lead: Axial leads, solderable per MIL-STD-202, method 208 guaranteed
- \* Polarity: Color band denotes cathode end
- \* Mounting position: Any
- \* Weight: 1.10 grams

## VOLTAGE RANGE

50 to 600 Volts

## CURRENT

3.0 Amperes



Dimensions in inches and (millimeters)

## MAXIMUM RATINGS AND ELECTRICAL CHARACTERISTICS

Rating 25°C ambient temperature unless otherwise specified.  
Single phase half wave, 60Hz, resistive or inductive load.  
For capacitive load, derate current by 20%.

TYPE NUMBER	MR850	MR851	MR852	MR854	MR856	UNITS	
Maximum Recurrent Peak Reverse Voltage	50	100	200	400	600	V	
Maximum RMS Voltage	35	70	140	280	480	V	
Maximum DC Blocking Voltage	50	100	200	400	600	V	
Maximum Average Forward Rectified Current .375"(9.5mm) Lead Length at Ta=75°C						3.0	A
Peak Forward Surge Current, 8.3 ms single half sine-wave superimposed on rated load (JEDEC method)						200	A
Maximum Instantaneous Forward Voltage at 3.0A						1.25	V
Maximum DC Reverse Current Ta=25°C						5.0	μA
at Rated DC Blocking Voltage Ta=100°C						150	μA
Maximum Reverse Recovery Time (Note 1)						150	nS
Typical Junction Capacitance (Note 2)						60	pF
Operating and Storage Temperature Range Tj, Tstg						-65 — +150	°C

### NOTES:

- Reverse Recovery Time test condition: IF=0.5A, IR=1.0A, IRR=0.25A
- Measured at 1MHz and applied reverse voltage of 4.0V D.C.

# RATING AND CHARACTERISTIC CURVES (MR850 THRU MR856)

FIG.1-TYPICAL FORWARD CHARACTERISTICS

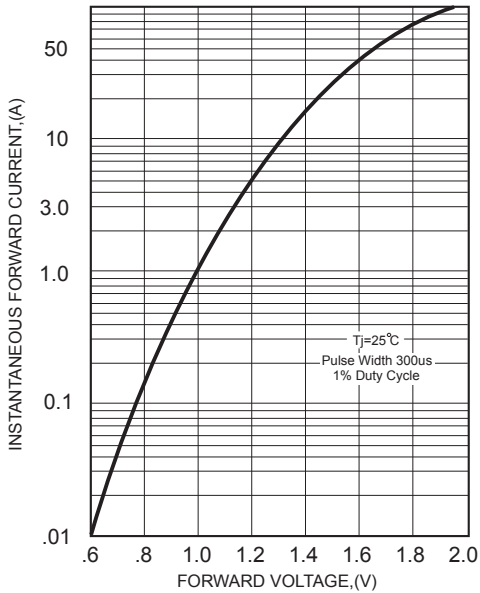


FIG.2-TYPICAL FORWARD CURRENT DERATING CURVE

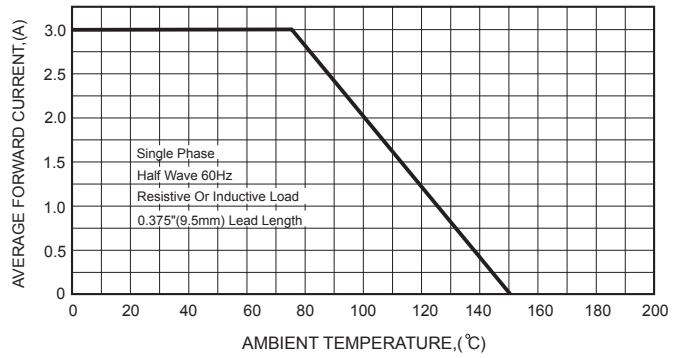
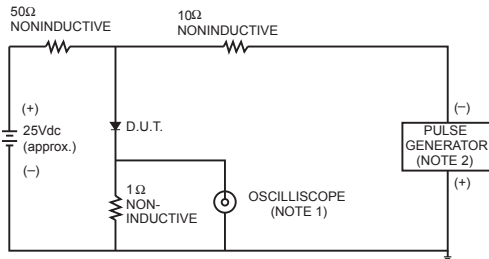


FIG.3- TEST CIRCUIT DIAGRAM AND REVERSE RECOVERY TIME CHARACTERISTICS



- NOTES: 1. Rise Time= 7ns max., Input Impedance= 1 megohm, 22pF.  
2. Rise Time= 10ns max., Source Impedance= 50 ohms.

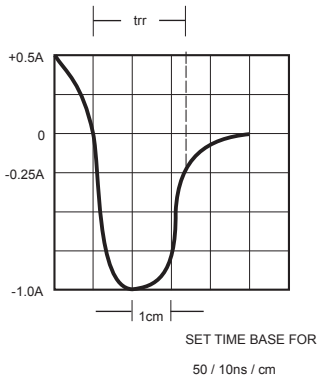


FIG.4-MAXIMUM NON-REPETITIVE FORWARD SURGE CURRENT

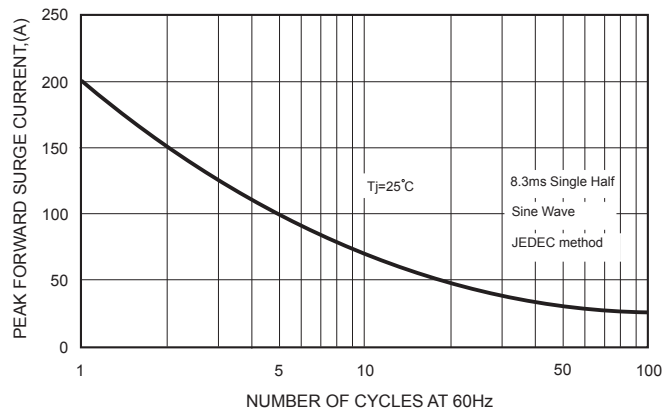


FIG.5-TYPICAL JUNCTION CAPACITANCE

